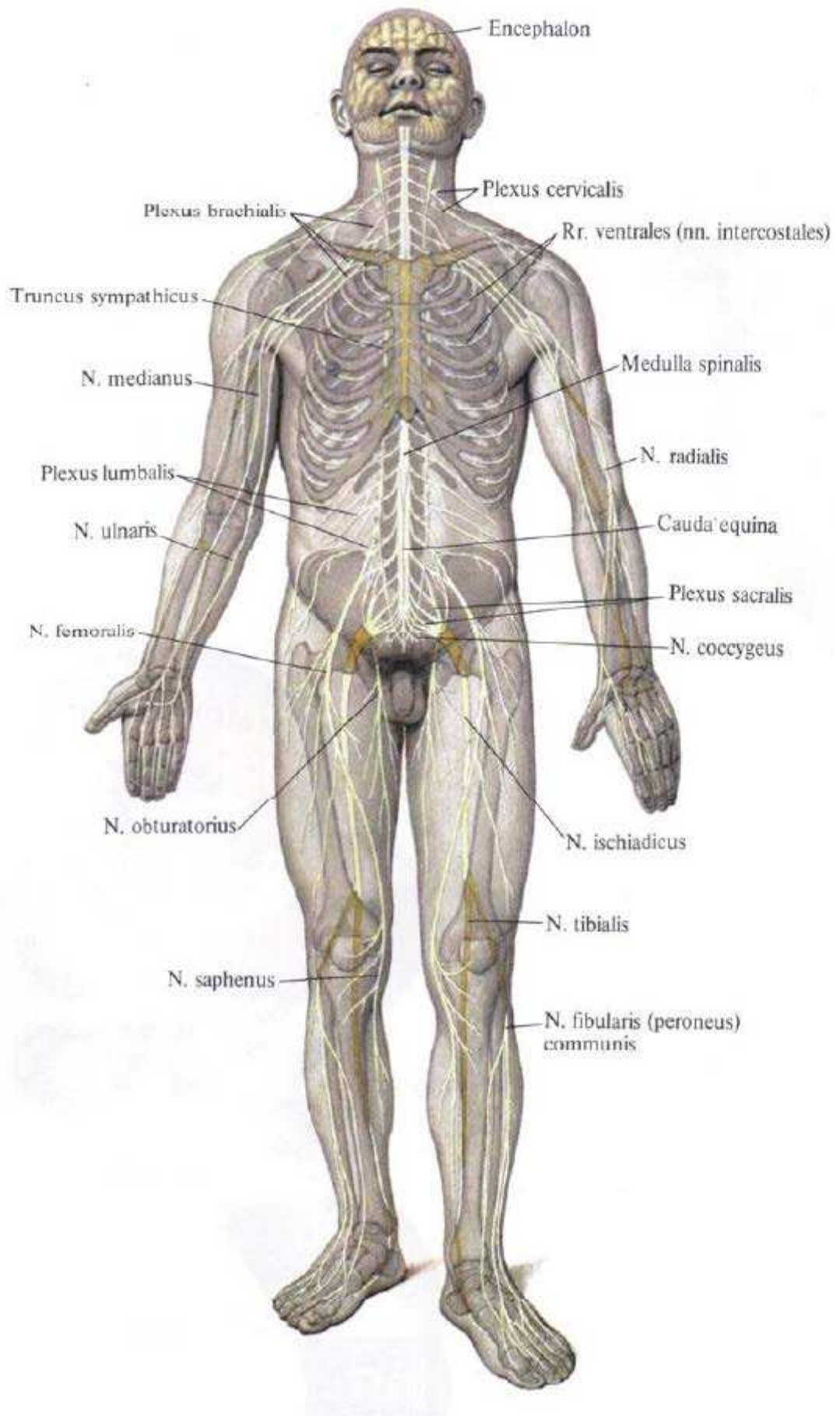
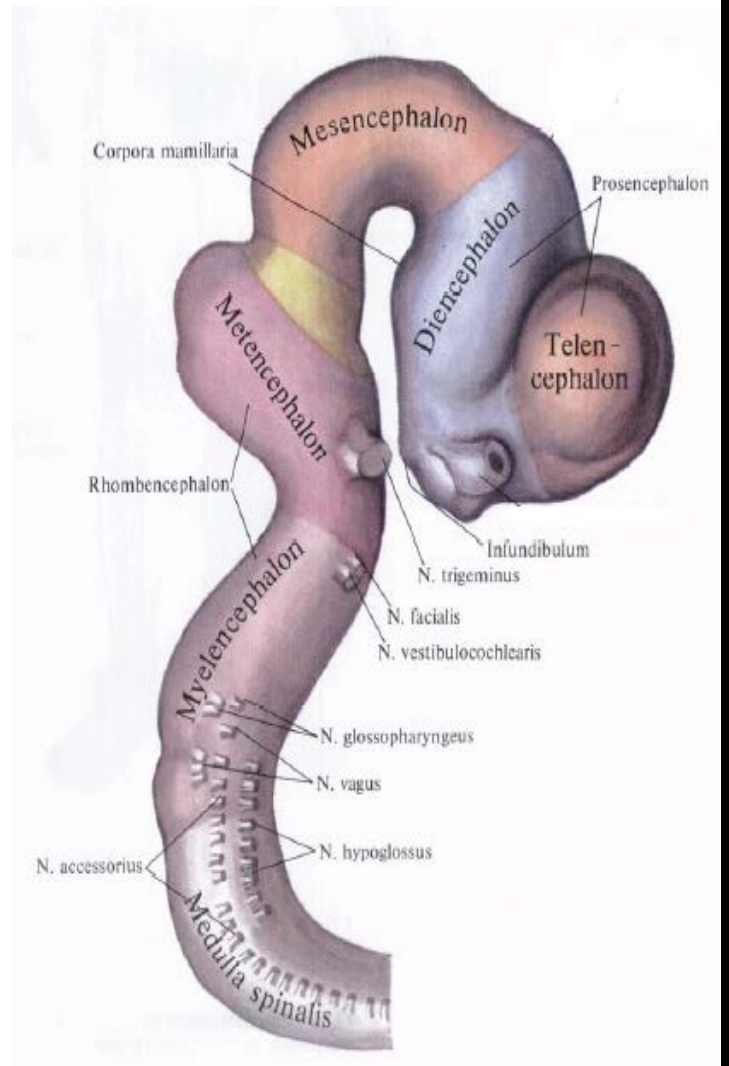
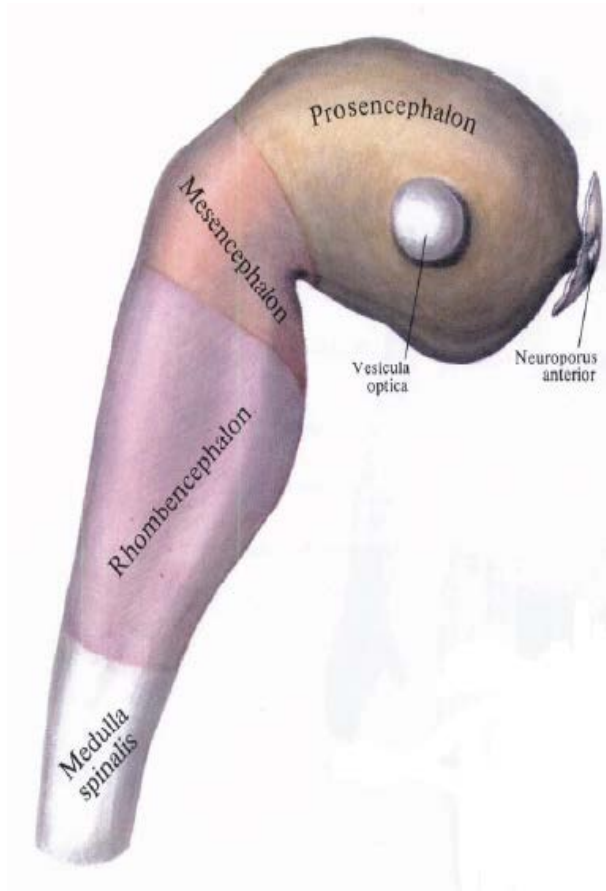


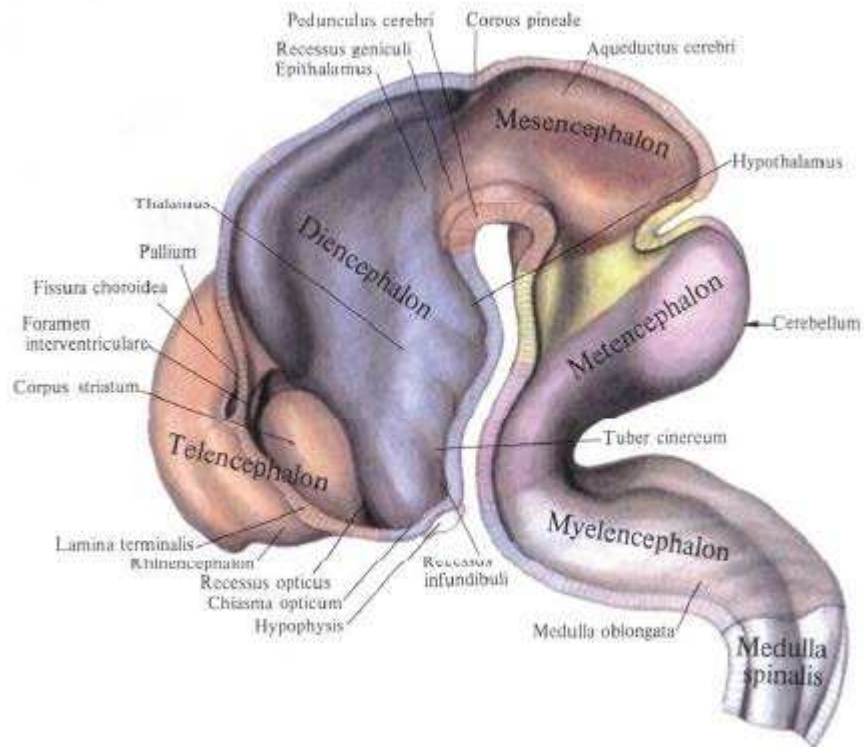
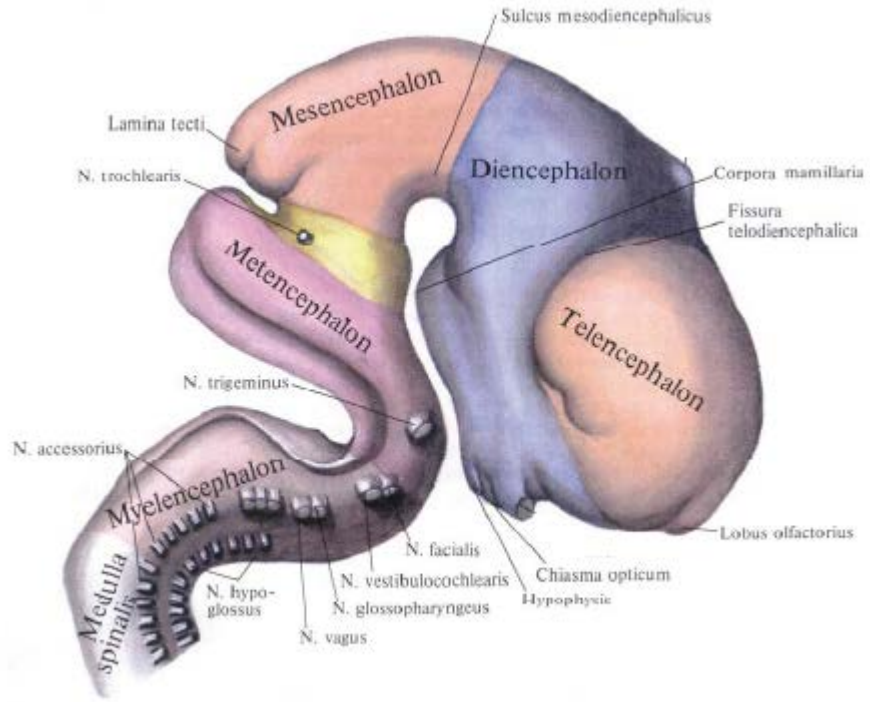
# NERW ULGAMY



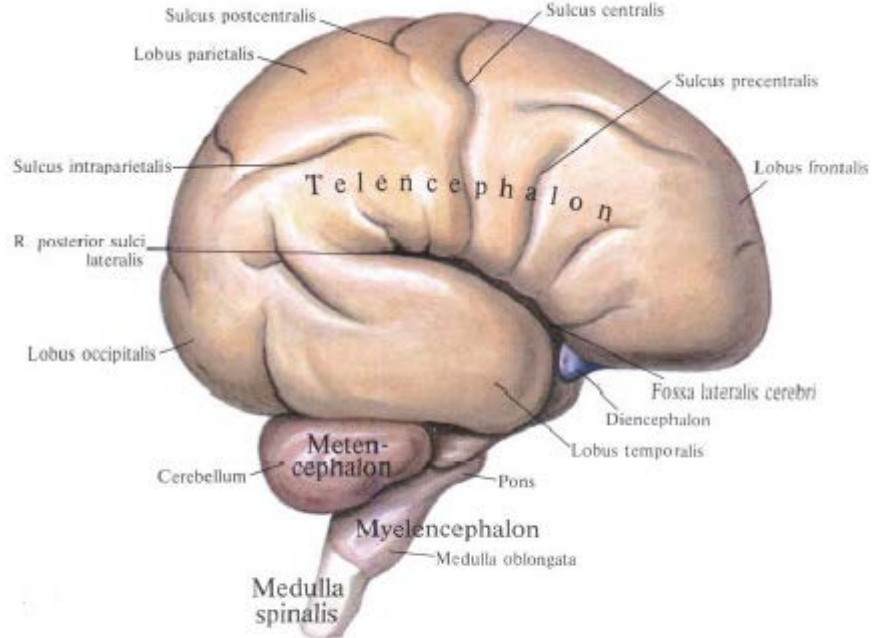
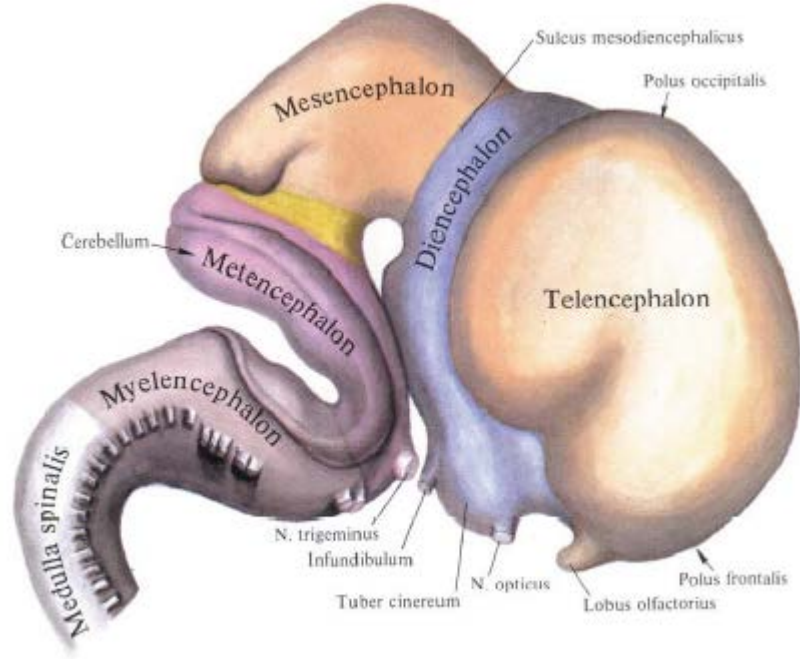
# KELLE BEÝNİNİN ÖSÜŐİ



# KELLE BEYİNİNİN ÖSÜŞİ

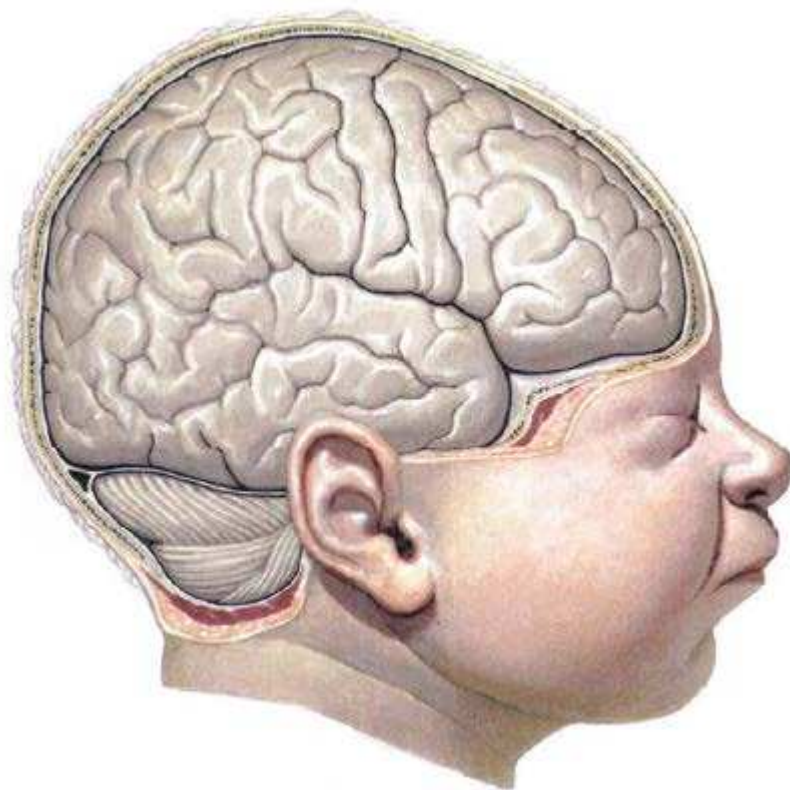


# KELLE BEÝNİNİN ÖSÜŐİ

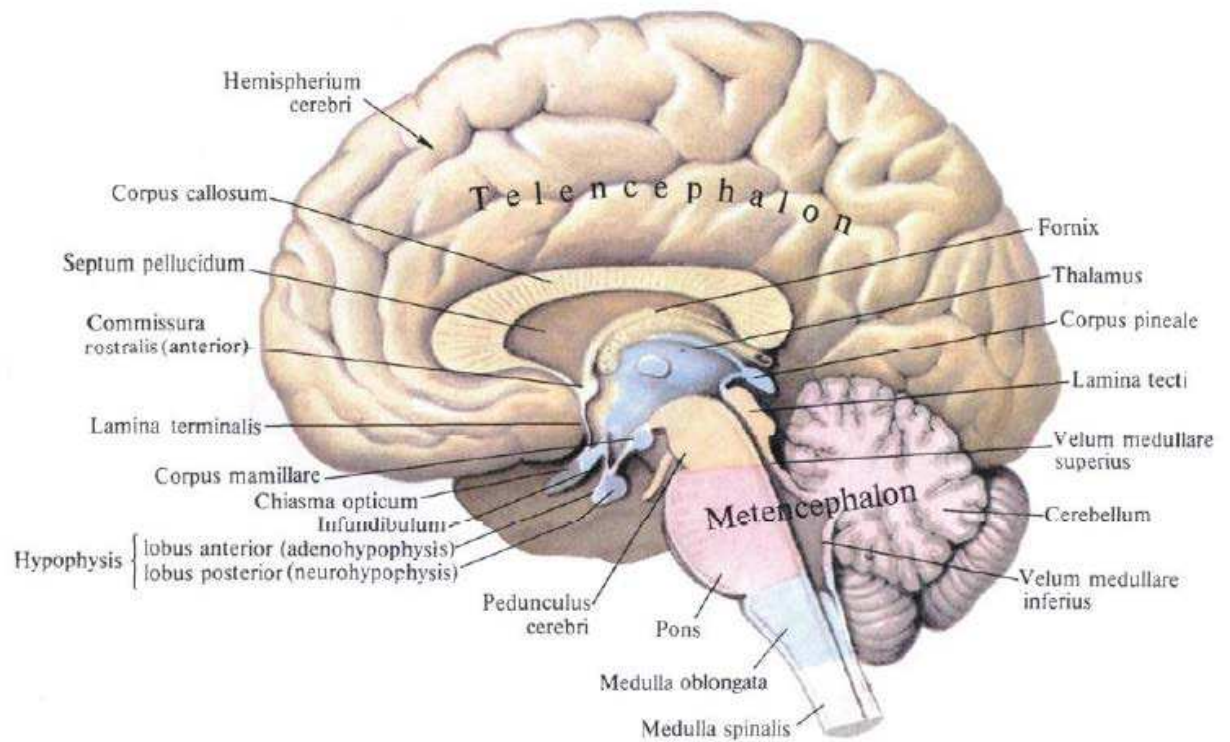




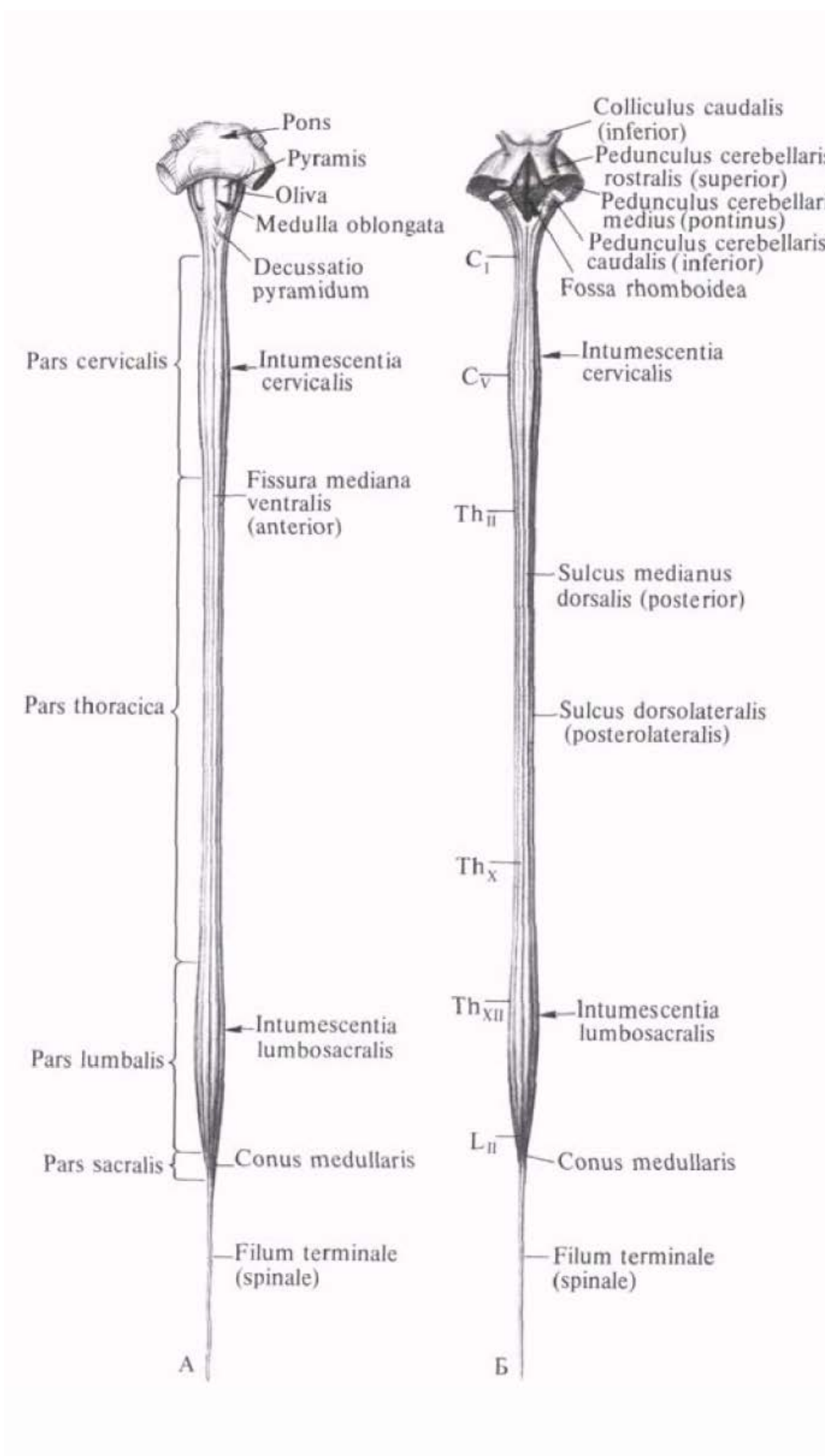
# ÝAŇY DOGLAN ÇAGANYŇ KELLE BEÝNISI



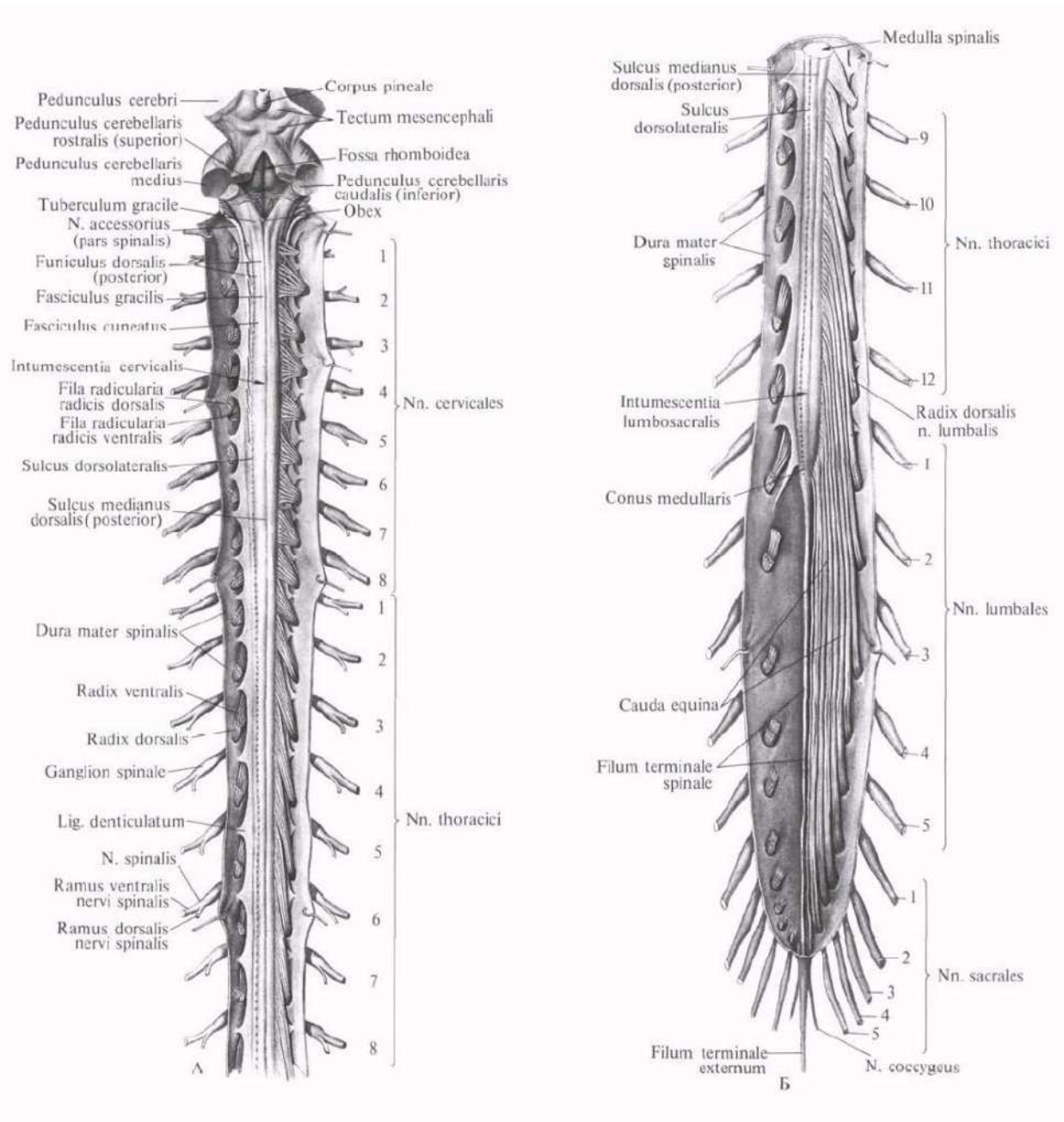
# ULY ADAMYŇ KELLE BEÝNISI



# OÑURGA BEÝNISI

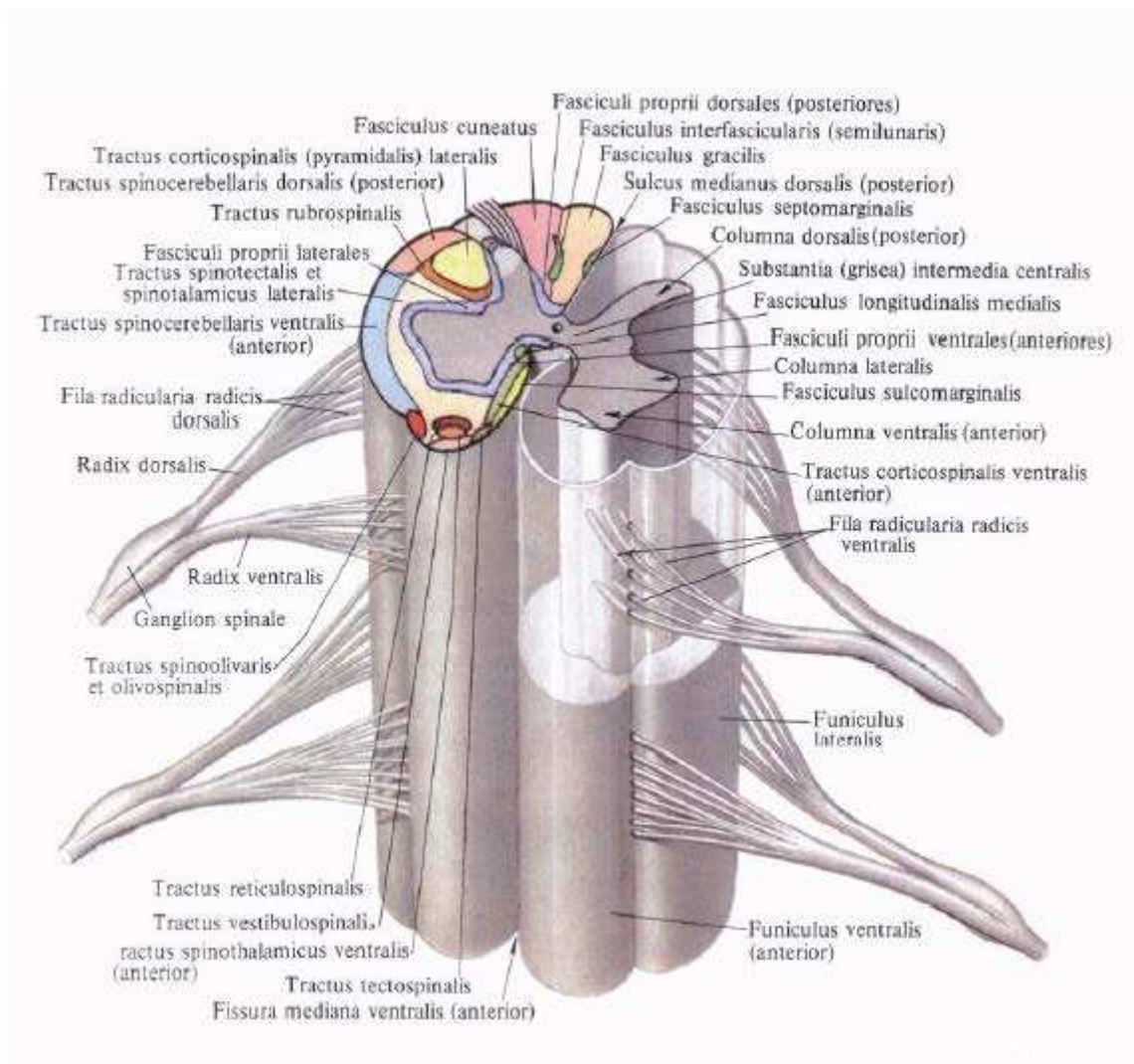


# OŇURGA BEÝNISI

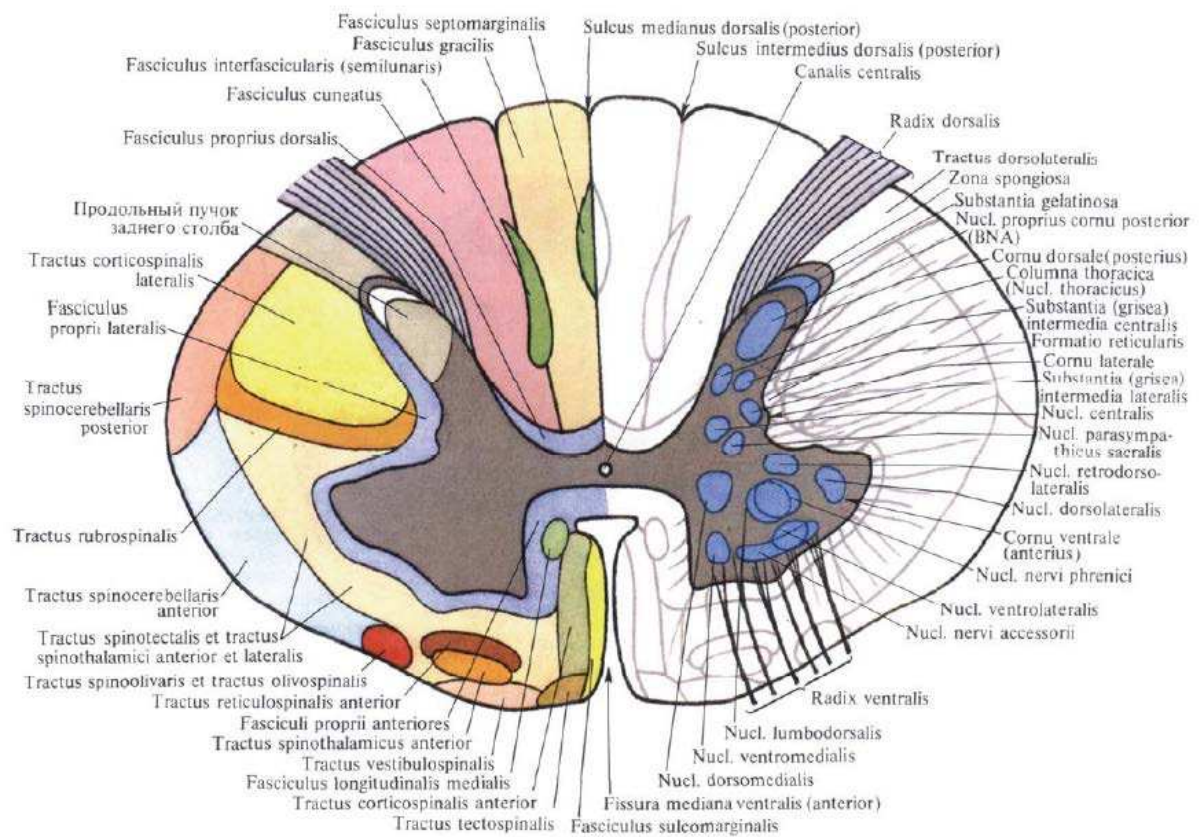




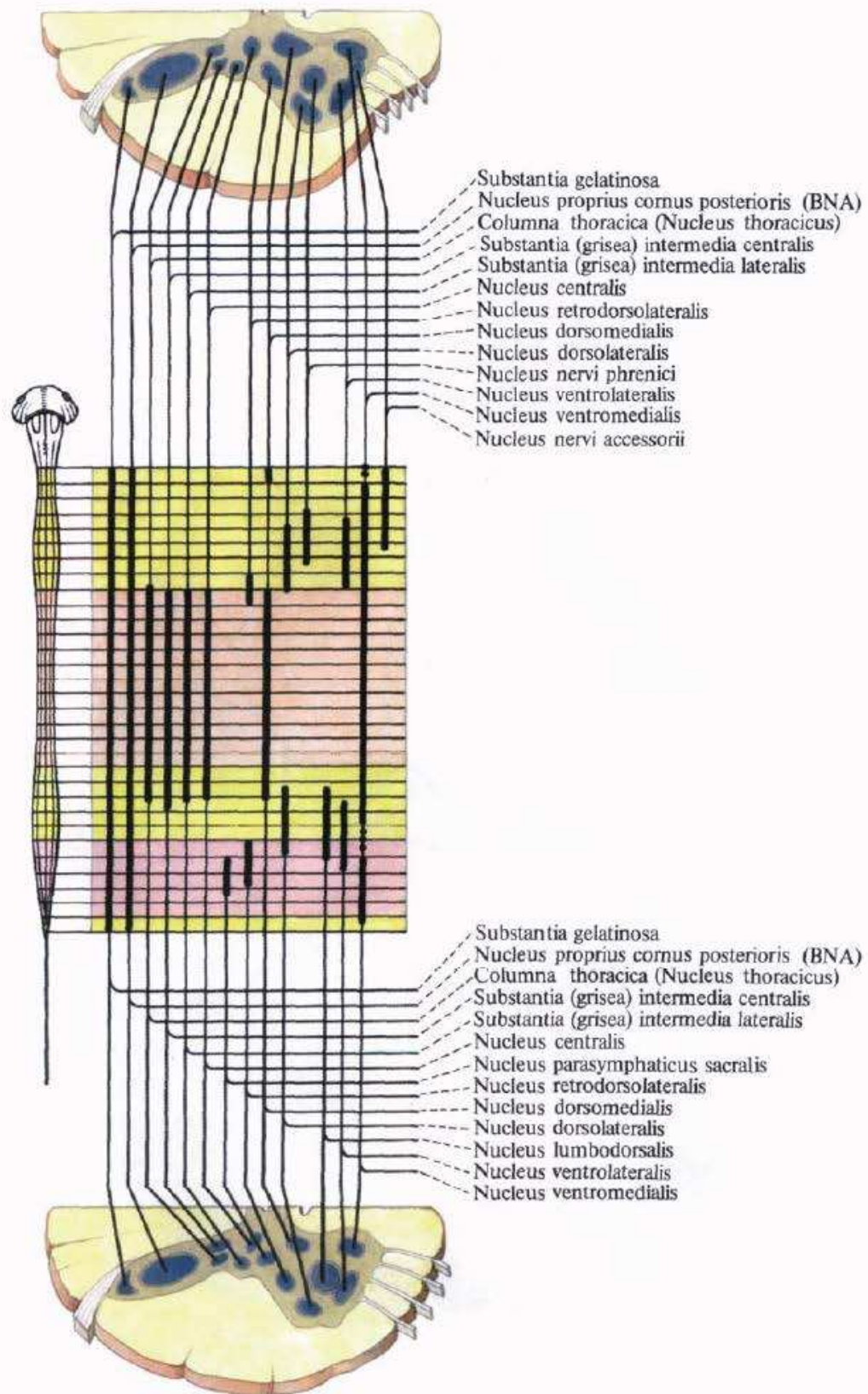
# OŇURGA BEÝNISI



# OŃURGA BEÝNISINIŃ KESE KESIMI

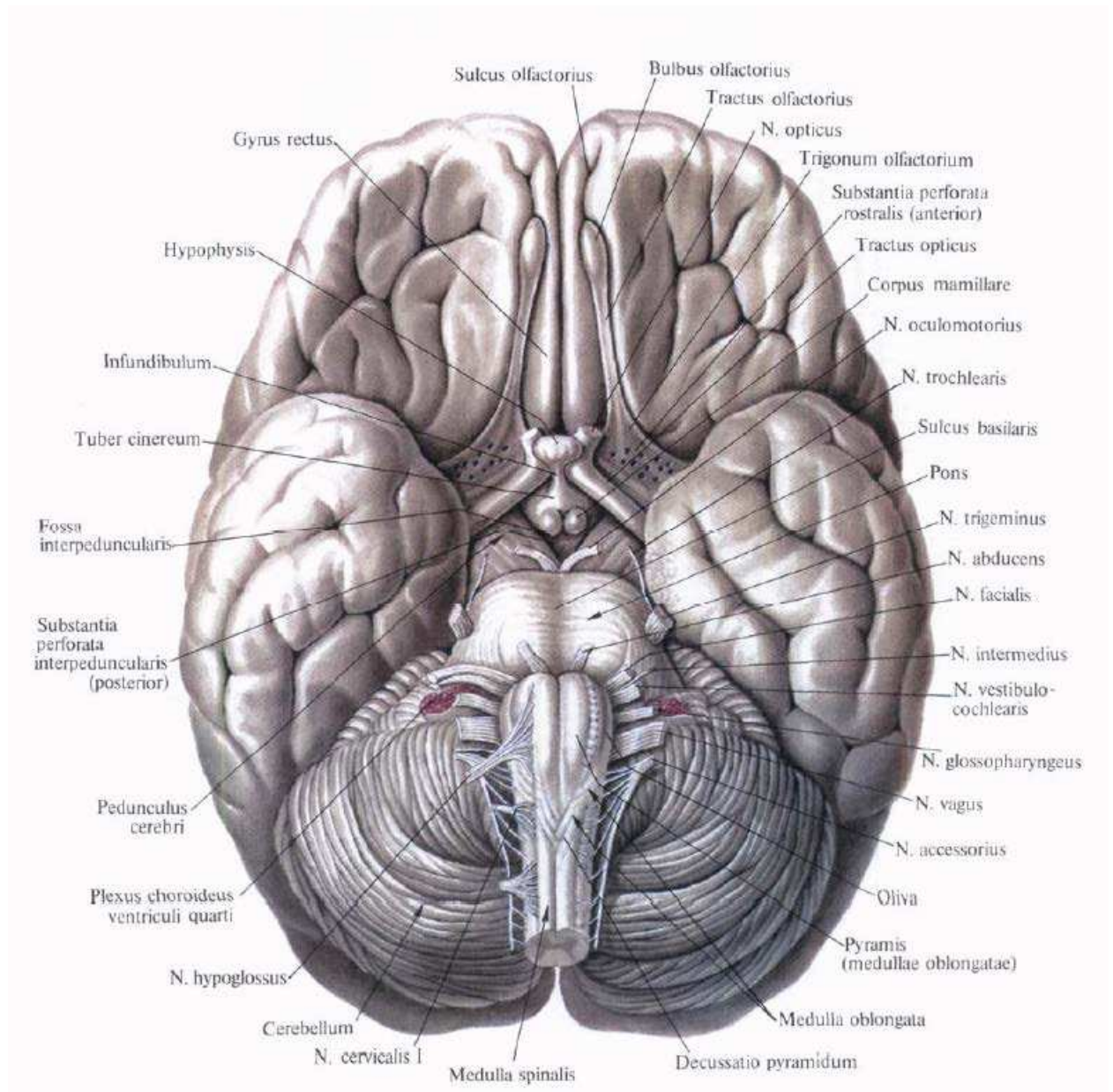


# OŃURGA BEÝNISINIŇ MAŇYZLARYNYŇ TOPOGRAFIÝASY



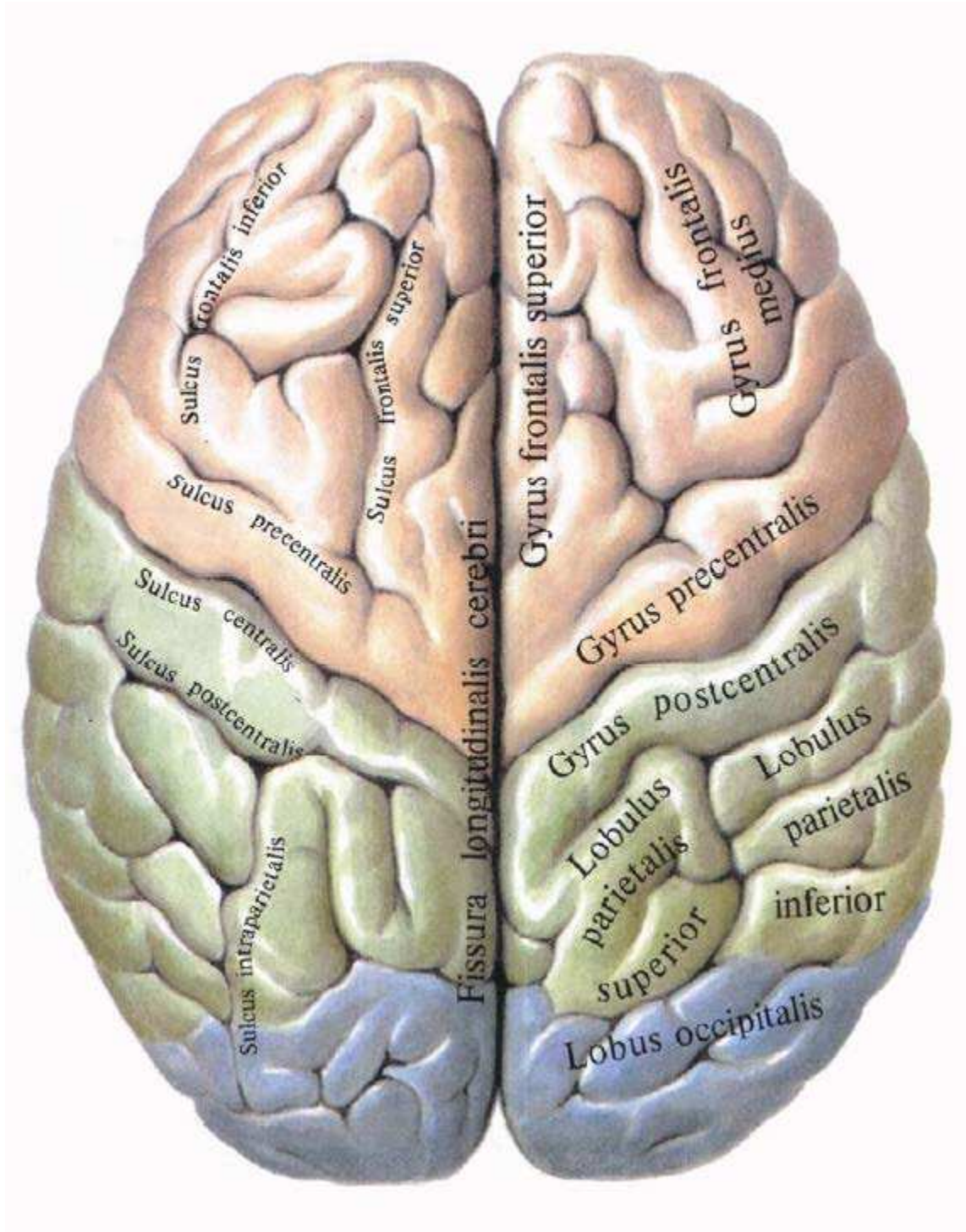


# KELLE BEÝNISI

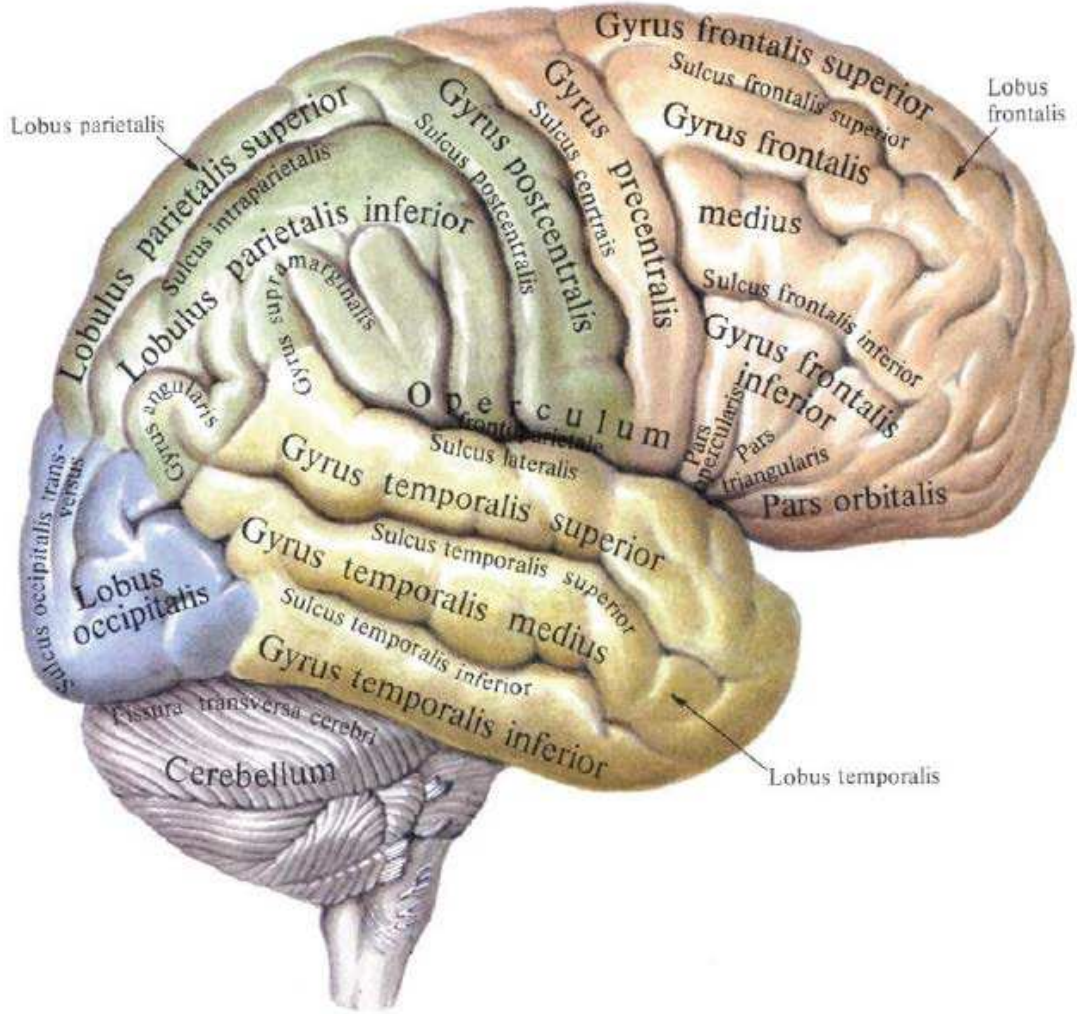




# ULY BEÝNI; ÝOKARDAN GÖRNÜŞI

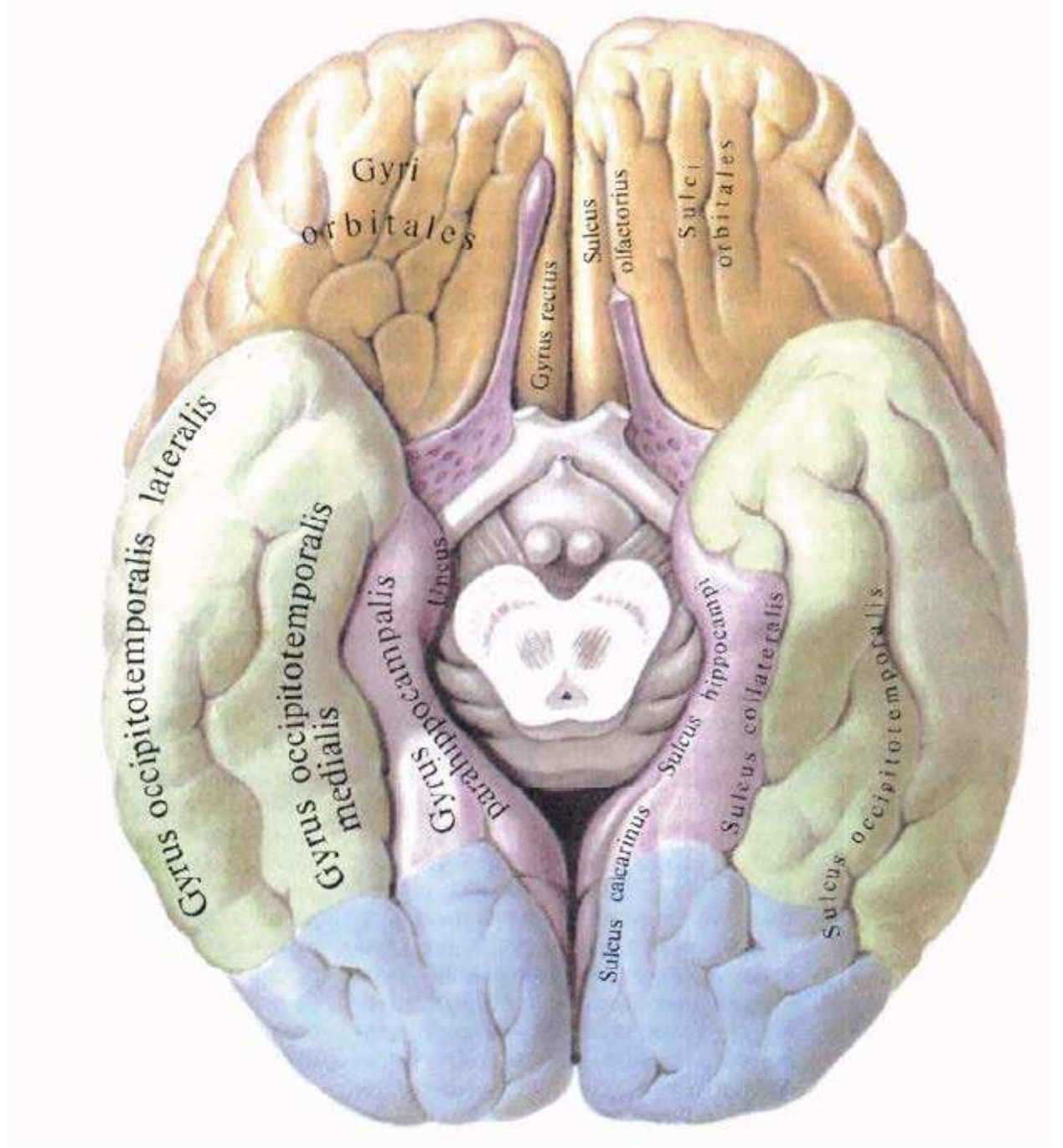


# ULY BEÝNI; GAPDALDAN GÖRNÜŞI





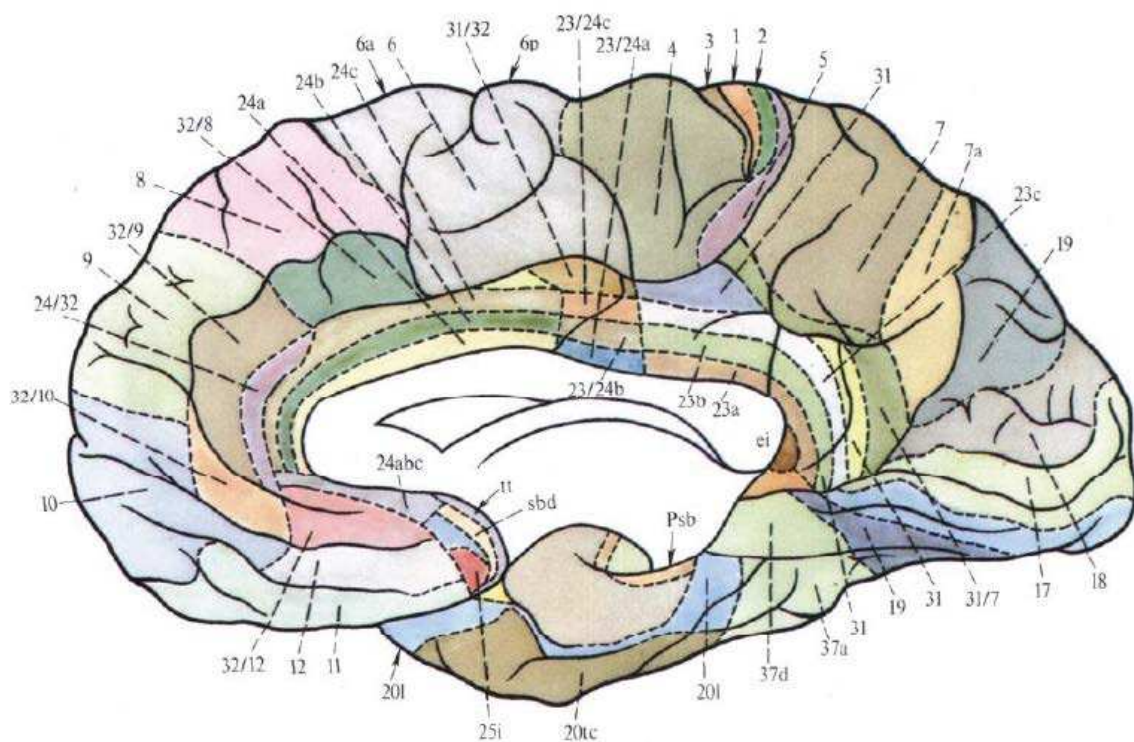
# ULY BEÝNI; AŞAKDAN GÖRNÜŞİ



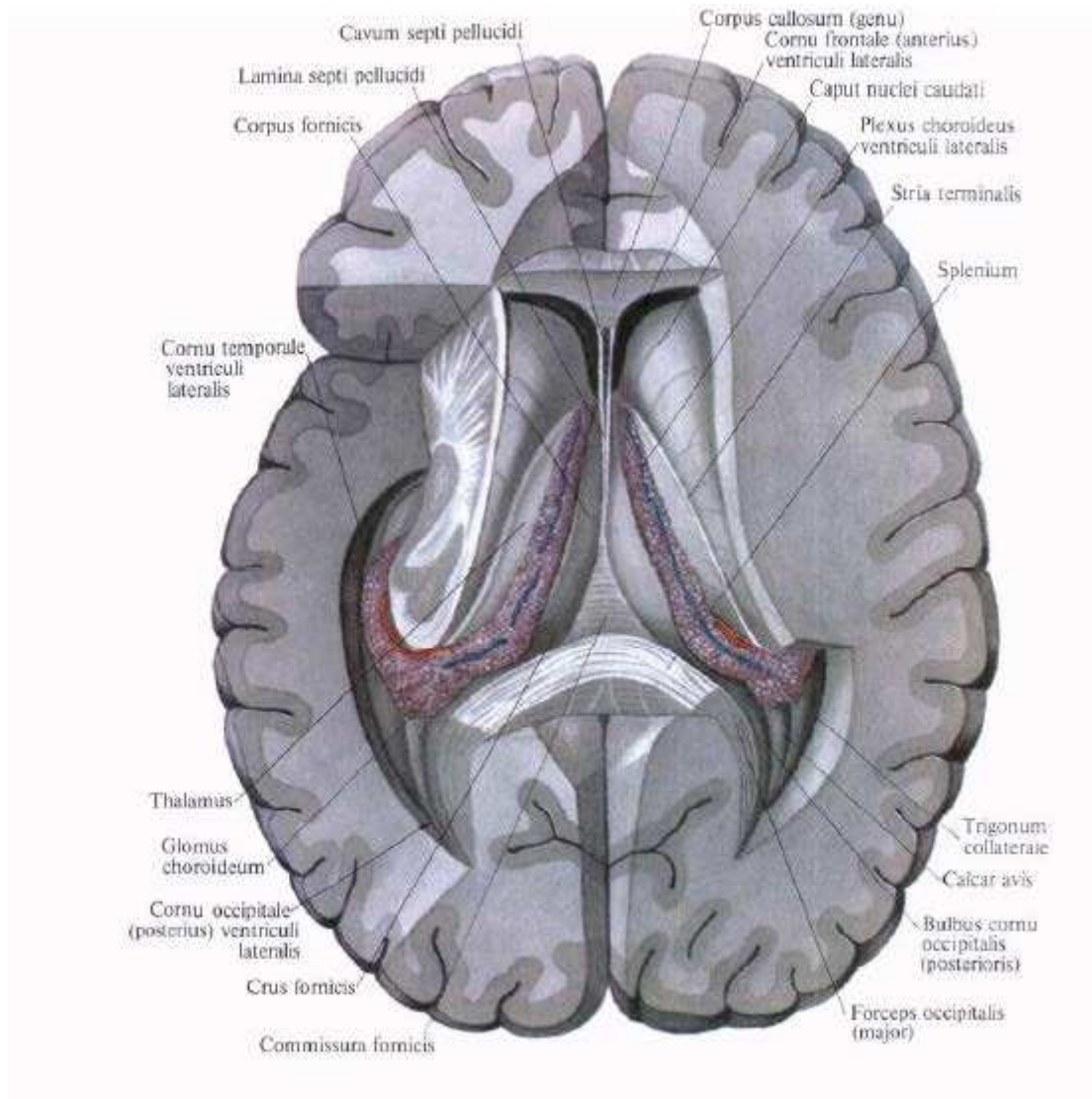
1—area postcentralis intermedia; 4—area gigantopyramidalis; 3—area postcentralis oralis; 2—area postcentralis caudalis; 40s—subarea supramarginalis; 40—area supramarginalis; 30s—subarea angularis superior; 40p—subarea supramarginalis posterior; 7a—subarea parietooccipitalis; 40i—subarea supramarginalis inferior; 39—area angularis; 39p—subarea angularis posterior; 19—area preoccipitalis; 18—area occipitalis; 37ac—area temporoparietooccipitalis posterior; 37b—area temporoparietooccipitalis centralis; 37a—area temporoparietooccipitalis inferior; 37c—area temporoparietooccipitalis superior; 37ab—area temporoparietooccipitalis anterior; 22—area temporalis superior; 21—area temporalis media; 40op—subarea supramarginalis opercularis; 20b—area temporalis basalis; 43—area postcentralis subcentralis; 20/38—area temporalis basalis polaris; 21/38—area temporalis media polaris; 22/38—area temporalis superior polaris; 47<sup>4</sup>—subarea orbitalis; 47<sup>5</sup>—subarea orbitalis; 45a—subarea triangularis; 10—area frontopolaris; 45—area triangularis; 46—area frontalis media; 44—area opercularis; 60p—subarea opercularis; 8—area frontalis intermedia; 6—area frontalis agranularis; 6a—subarea anterior; 6p—subarea posterior.



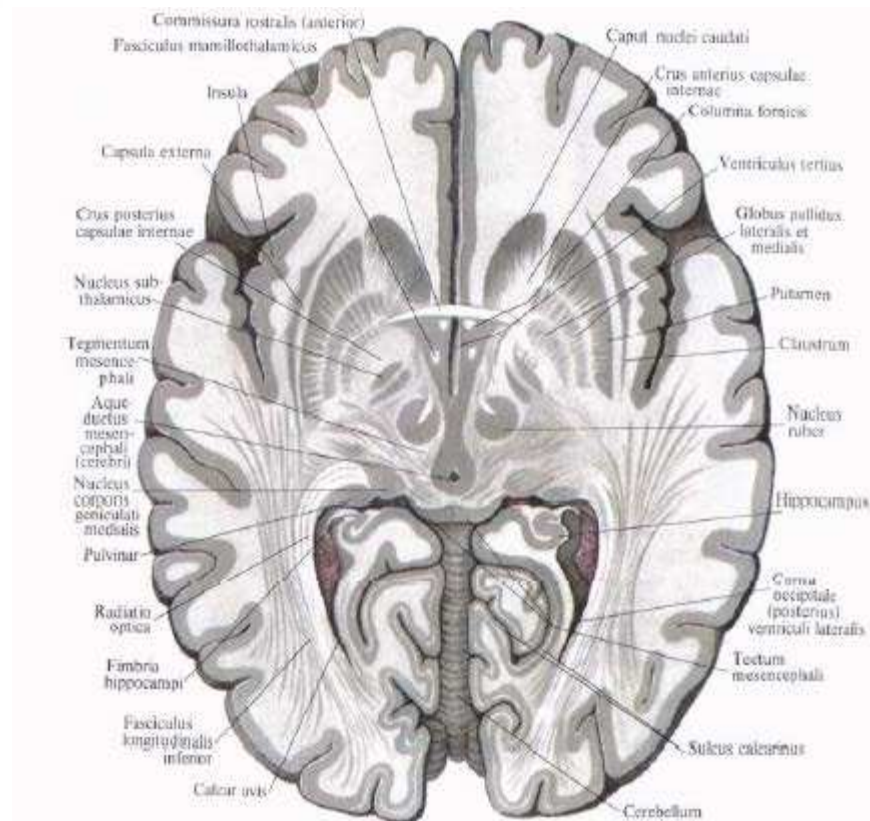
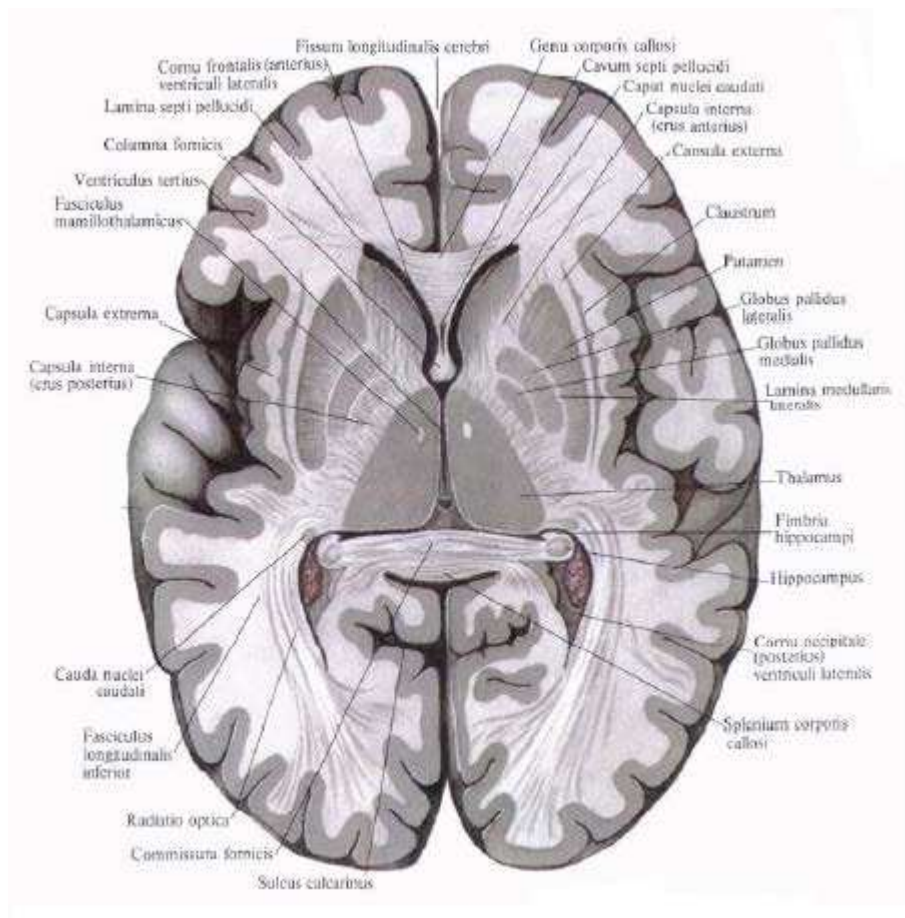
# ULY BEÝNINIŇ SITOARHITEKTONIKI MEÝDANÇALARY



# GAPDAL GARYNJYKLARY

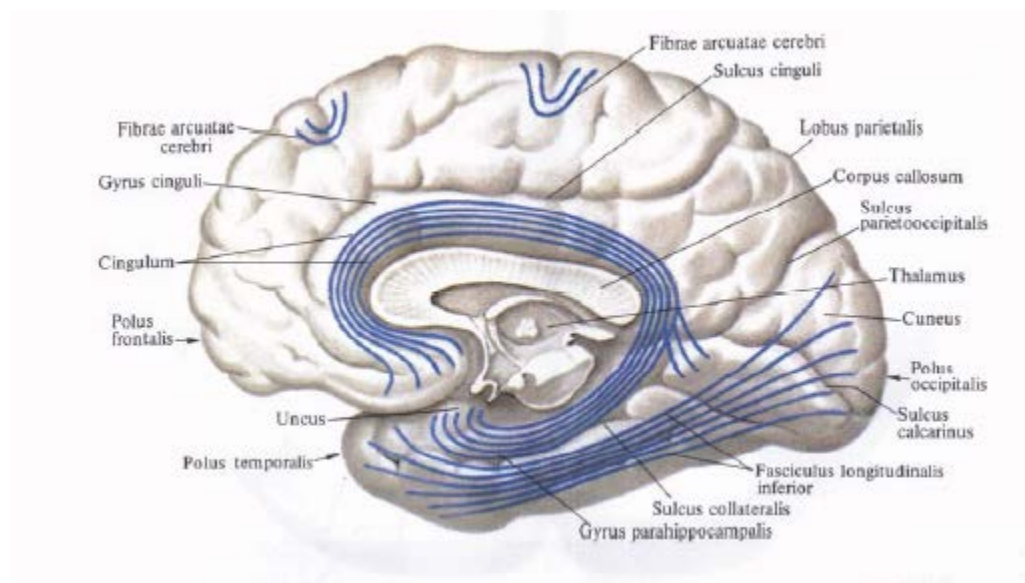
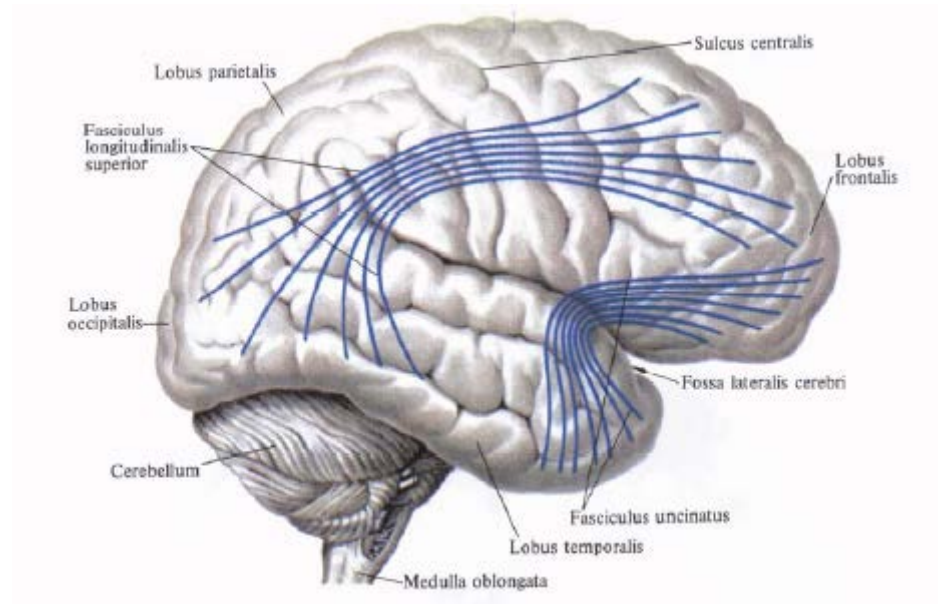


# ULY BEÝNI



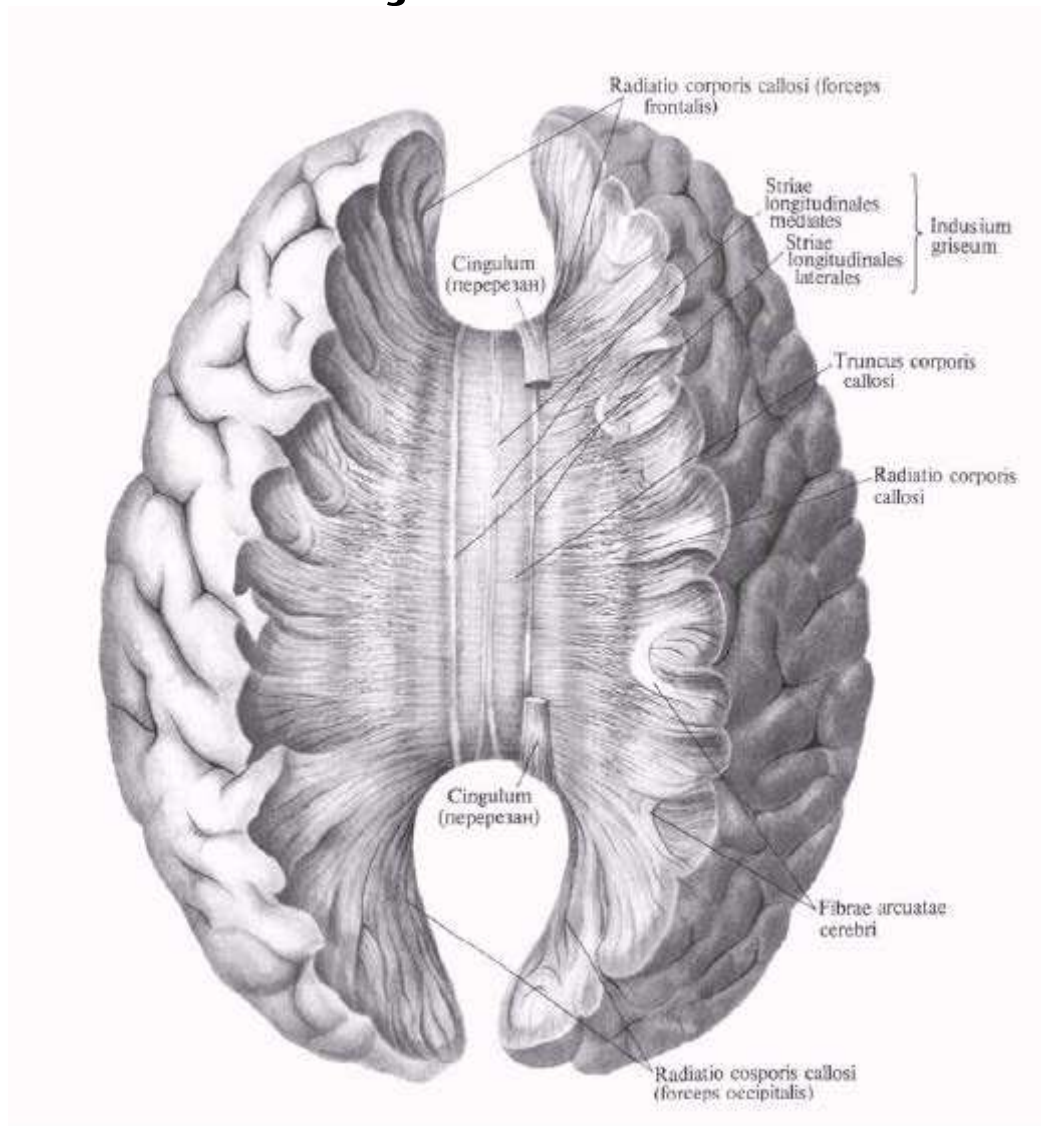


# ASSOSIATIV YOLLARY

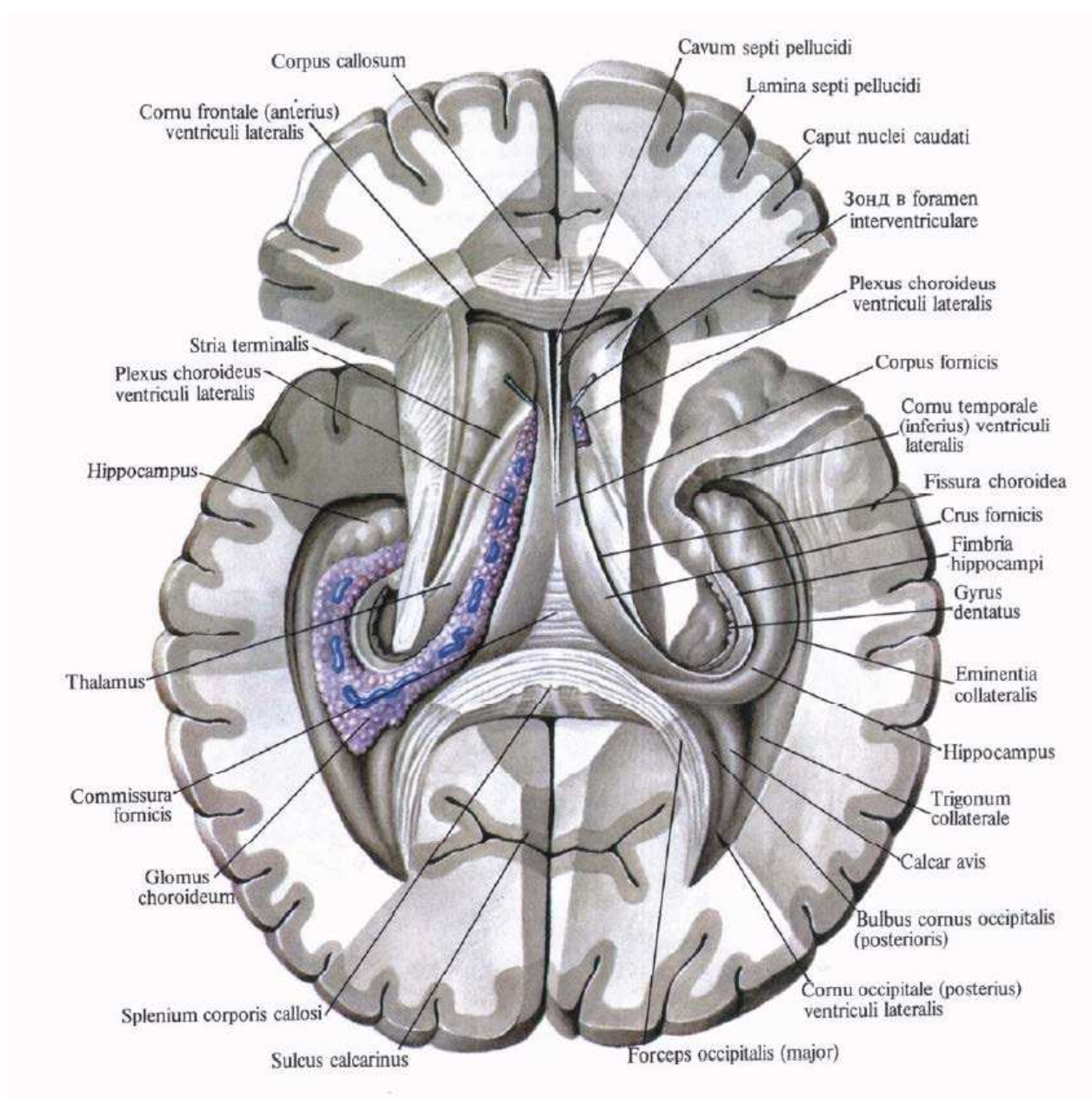




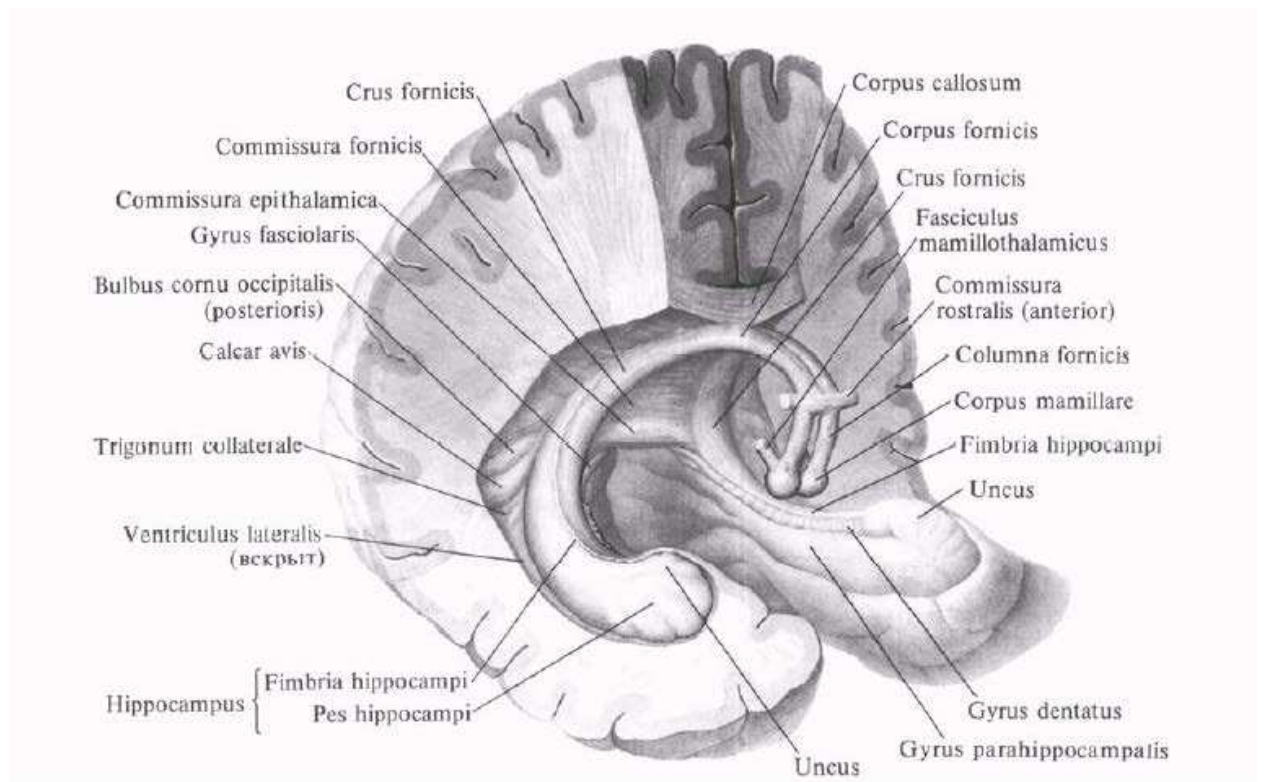
# GABARÇAKLY BEDENI



# GAPDAL GARYNJYKLARY

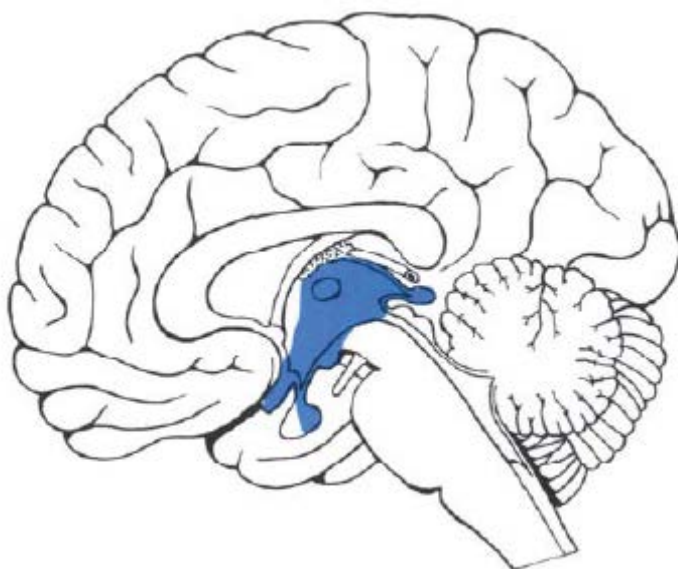


# GÜMMEZ WE GIPPOKAMP

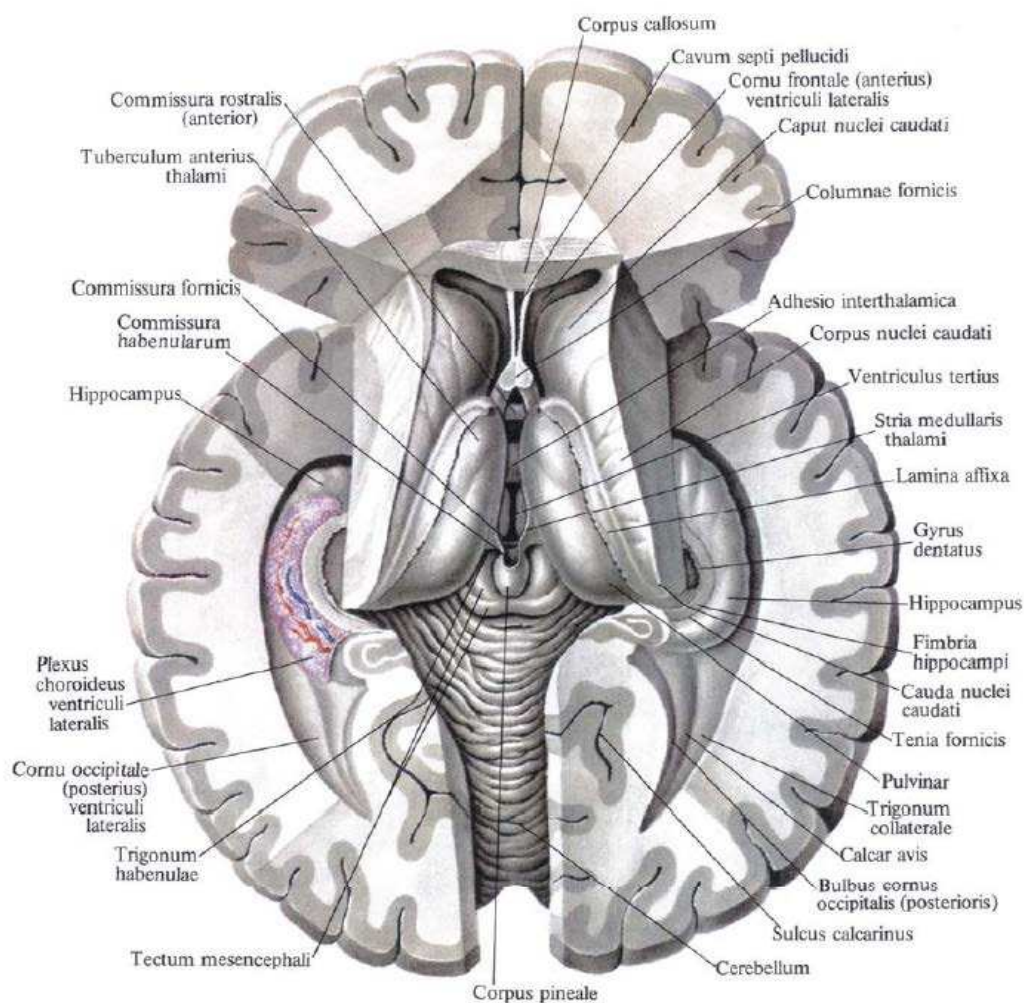




# ARALYK BEÝNINIŇ TOPOGRAFIÝASY

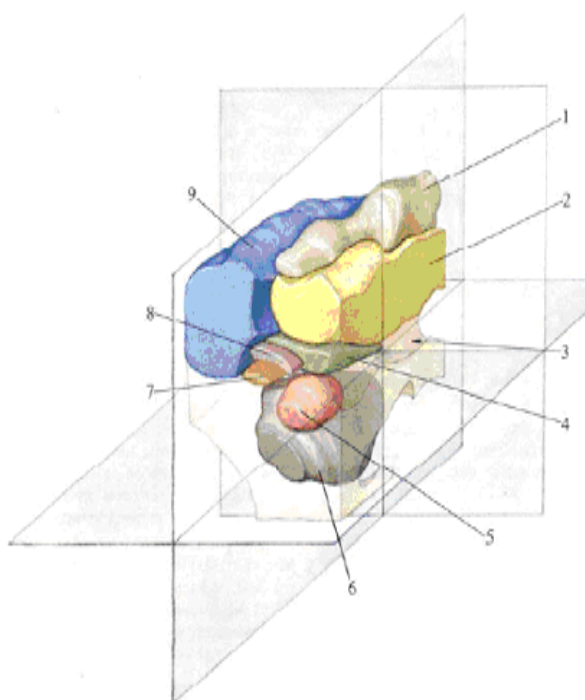
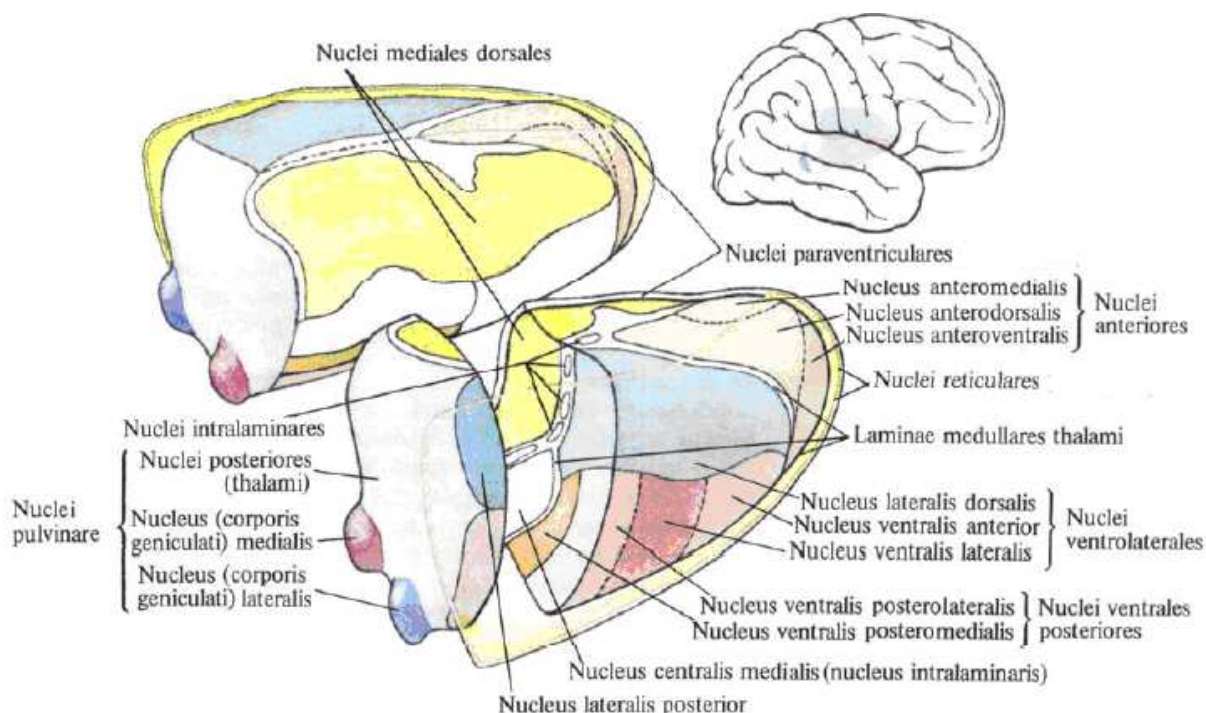


## Üçünji garynjyk



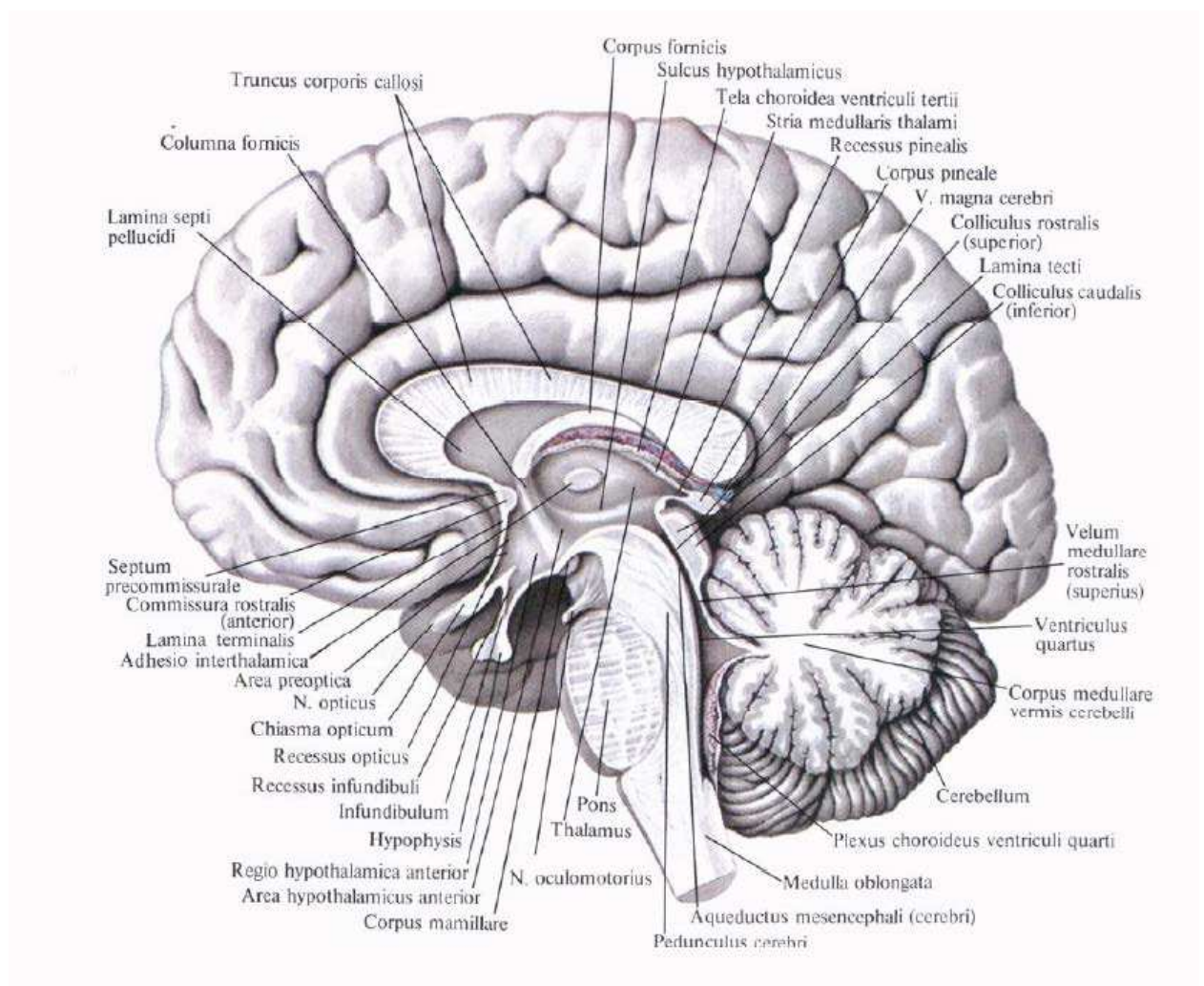


# ARALYK WE ORTAKY BEÝNINIŇ MAŇYZLARY

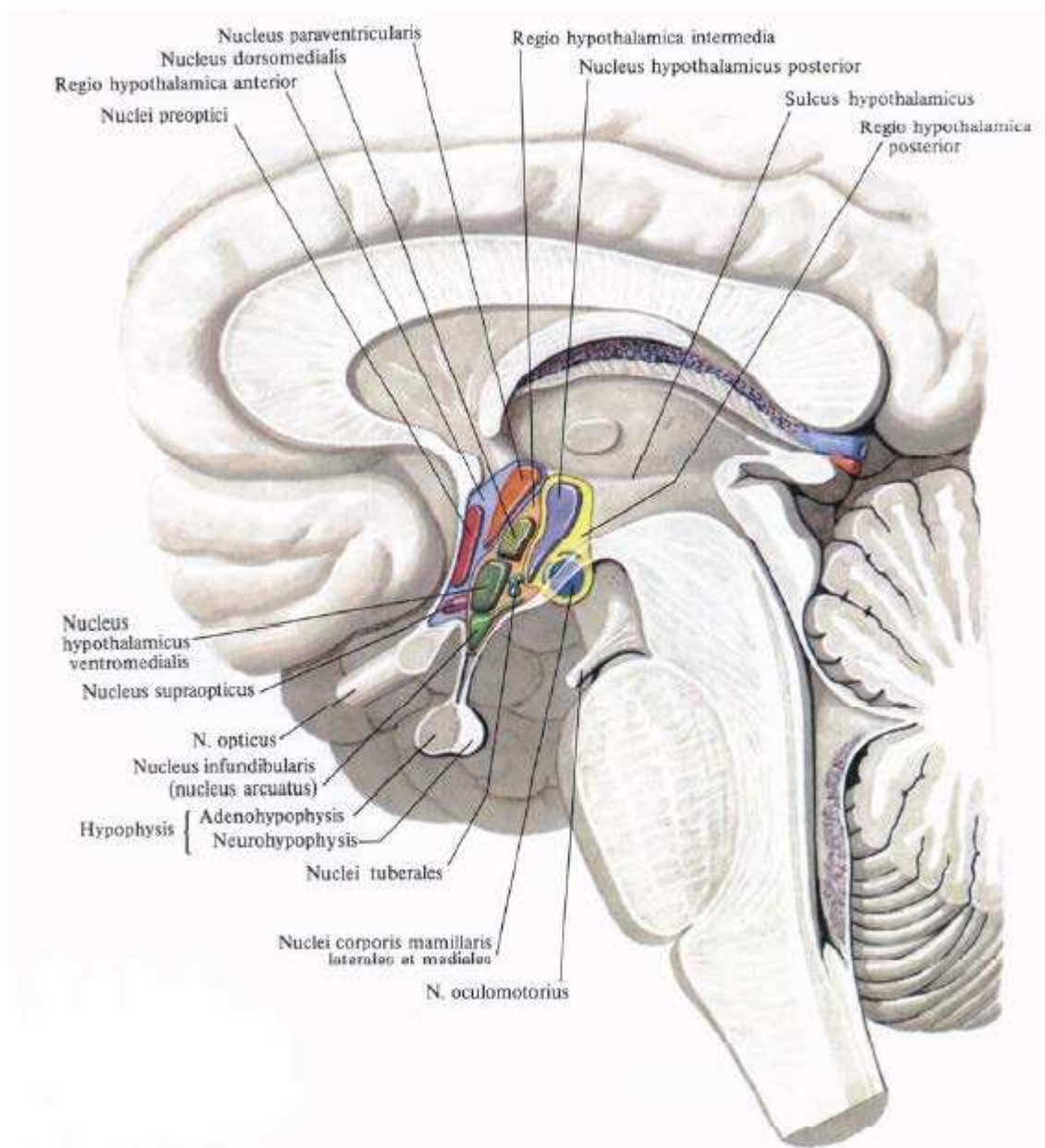


- 1—nuclei anteriores; 2—nuclei mediales;  
3—aqueductus mesencephali; 4—nuclei areae  $H_1$ ,  $H_2$ ; 5—nucleus ruber; 6—substantia nigra;  
7—nucleus subthalamicus; 8—zona incerta;  
9—nuclei ventrolaterales.

# KELLE BEÝNISI

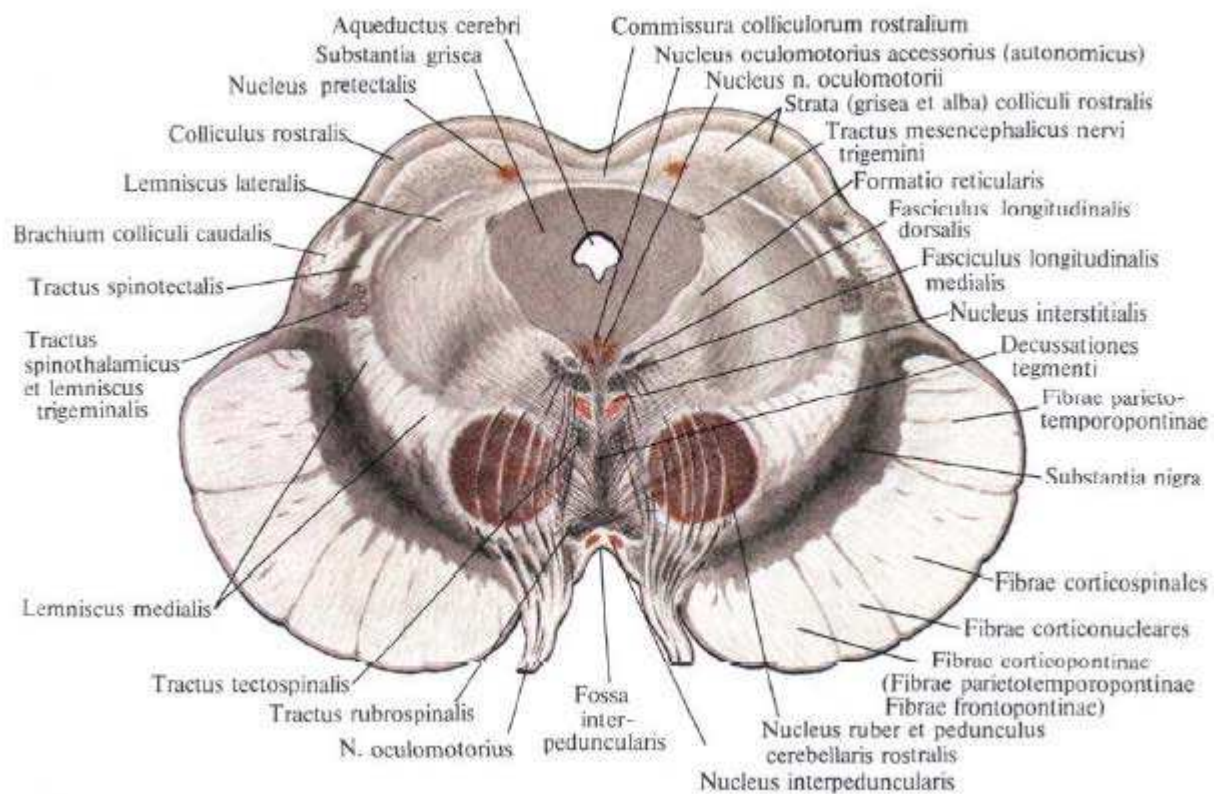
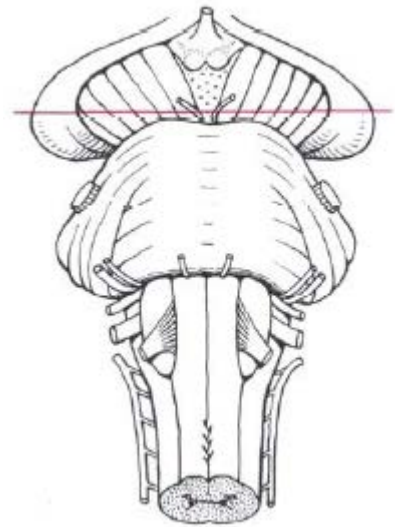
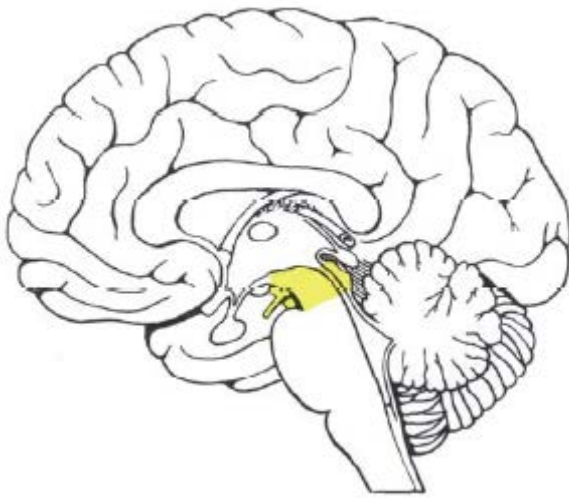


# GIPOTALAMUS

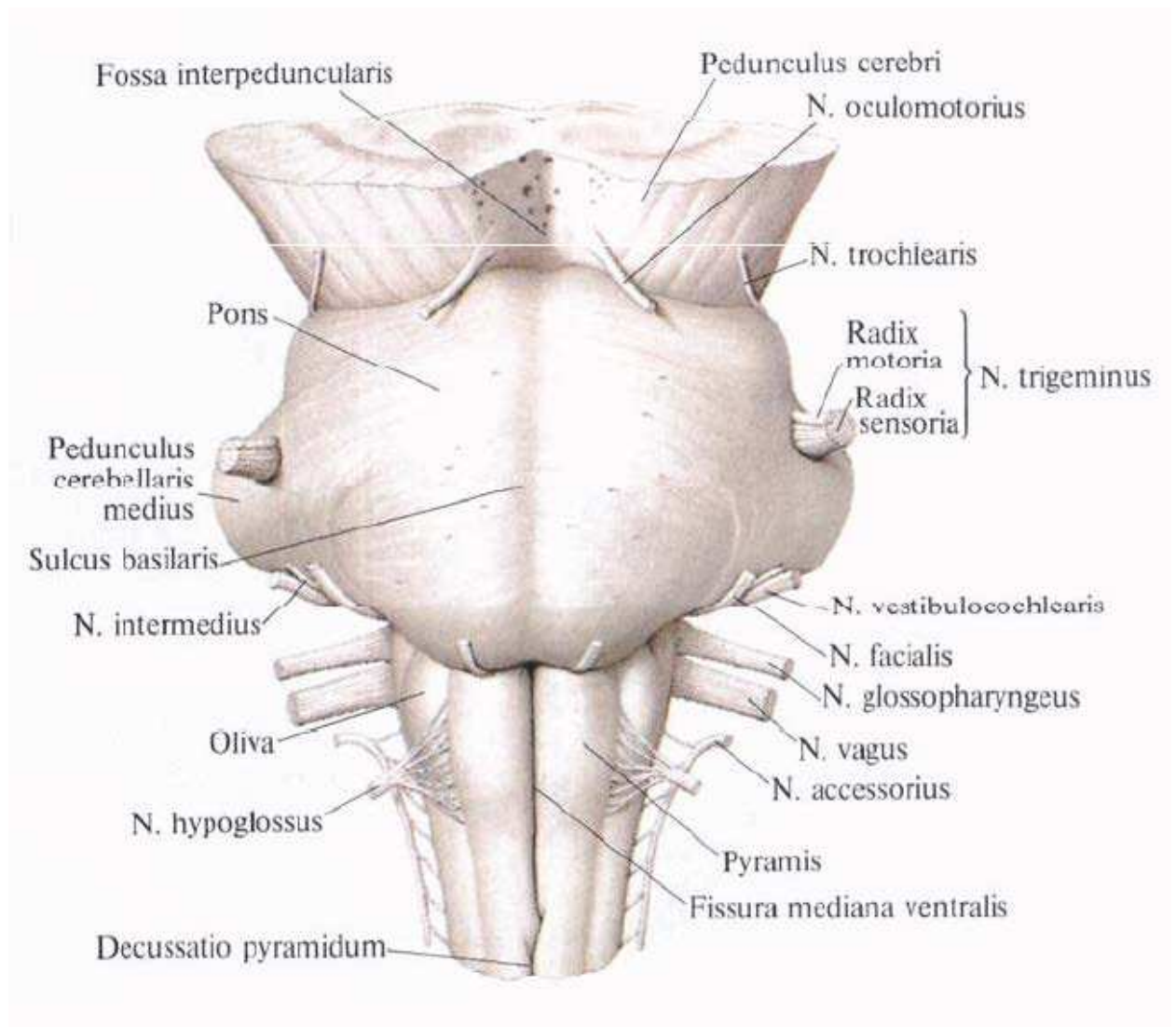




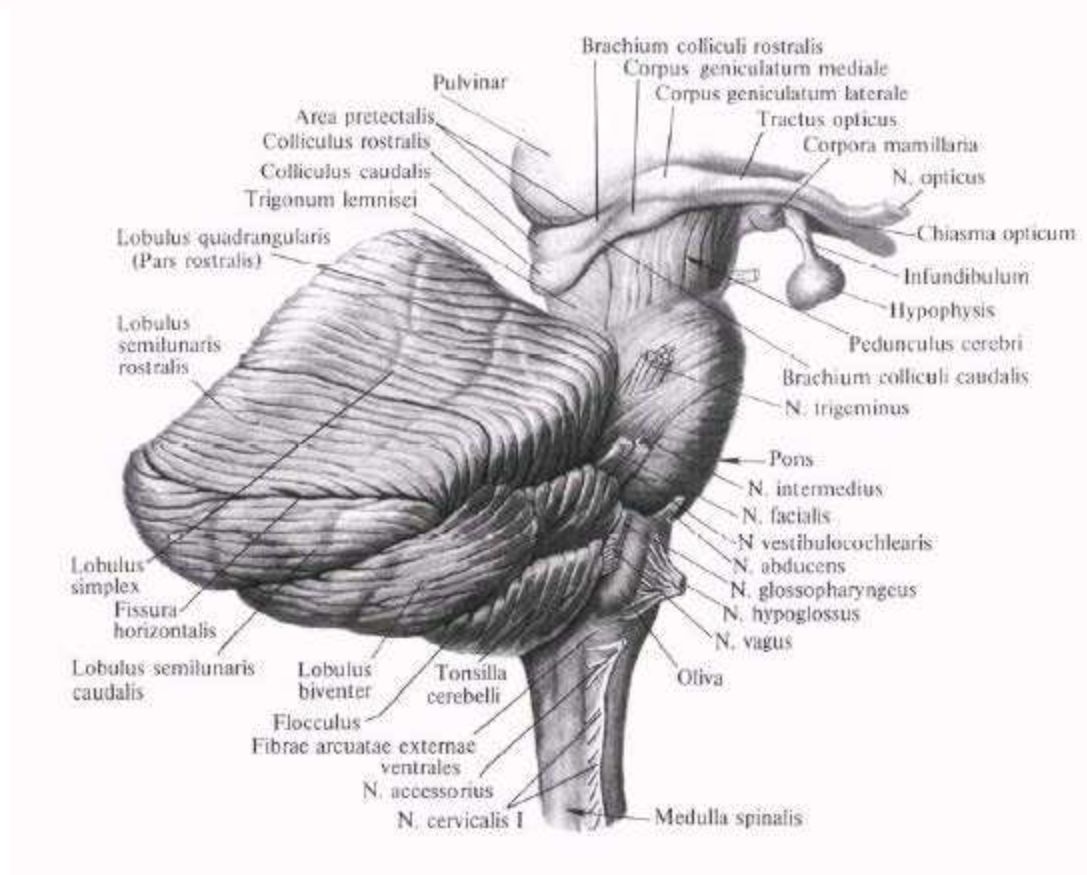
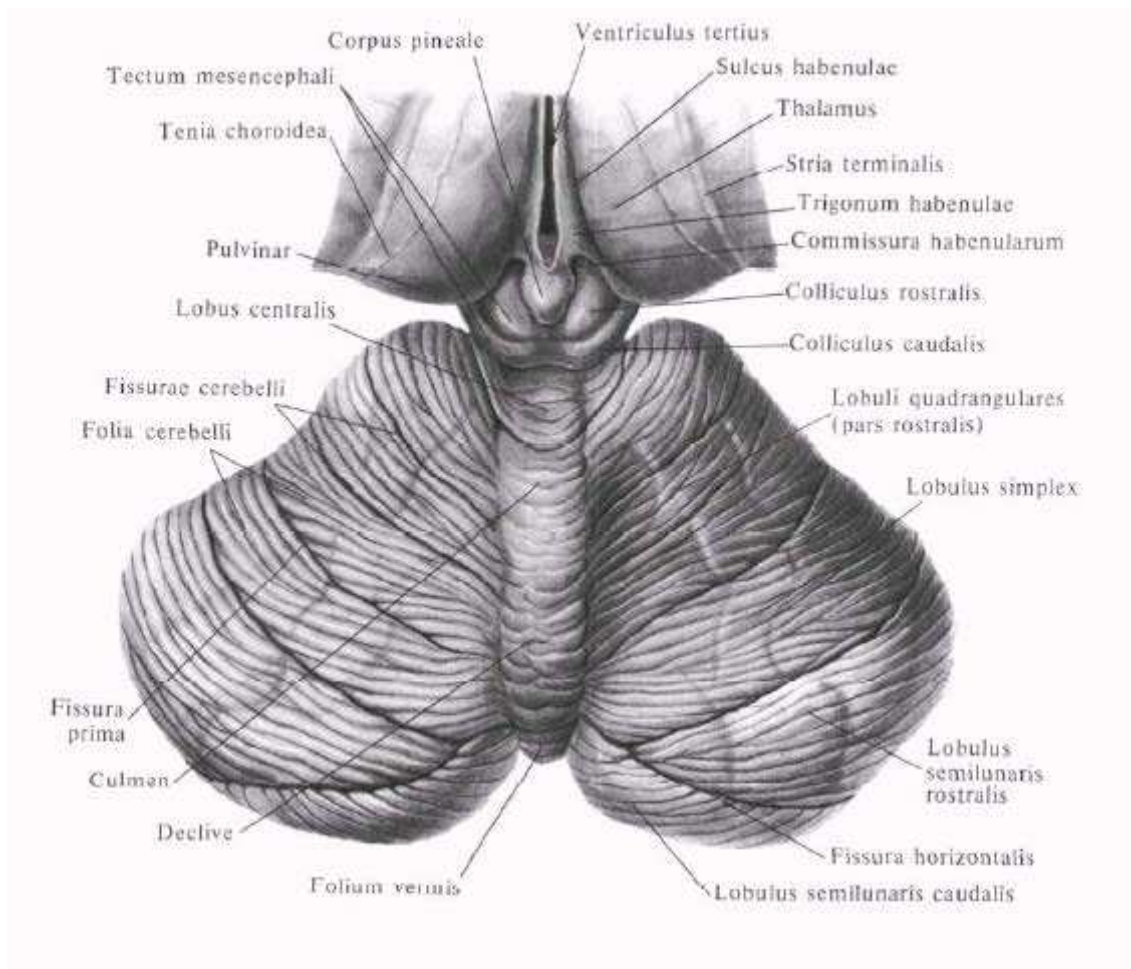
# ORTA BEÝNI



# SÜYRI BEÝNI, KÖPRI WE BEÝNI AÝAJYKLARY

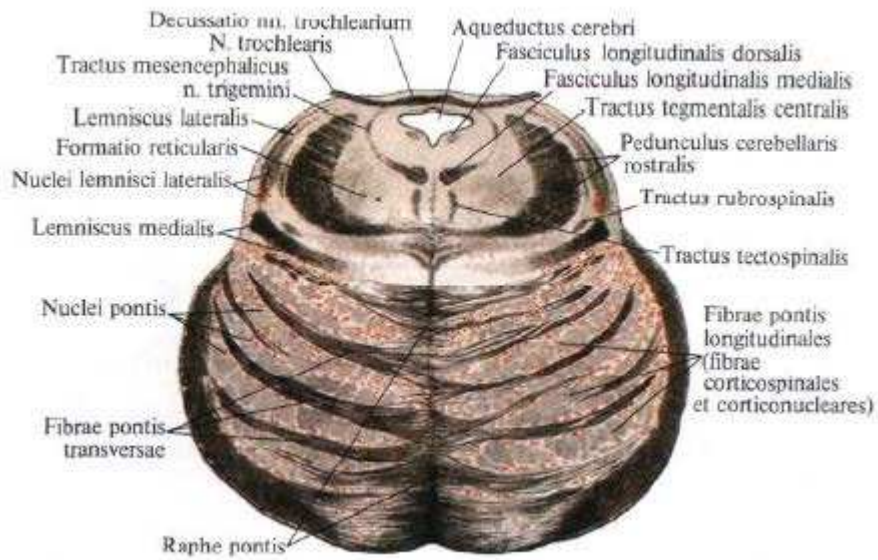
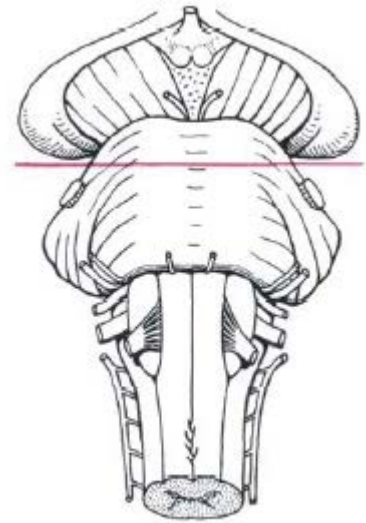
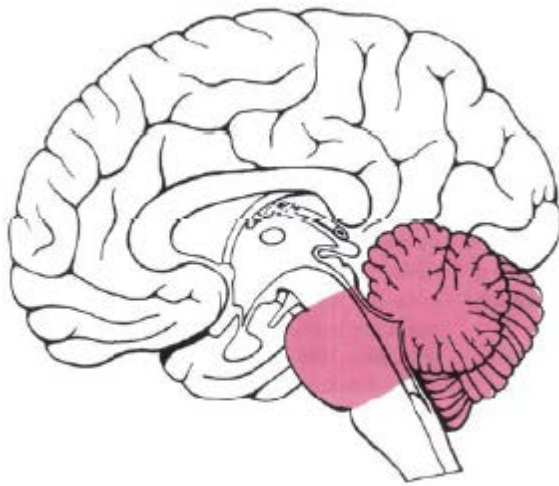


# BEYNIJIK

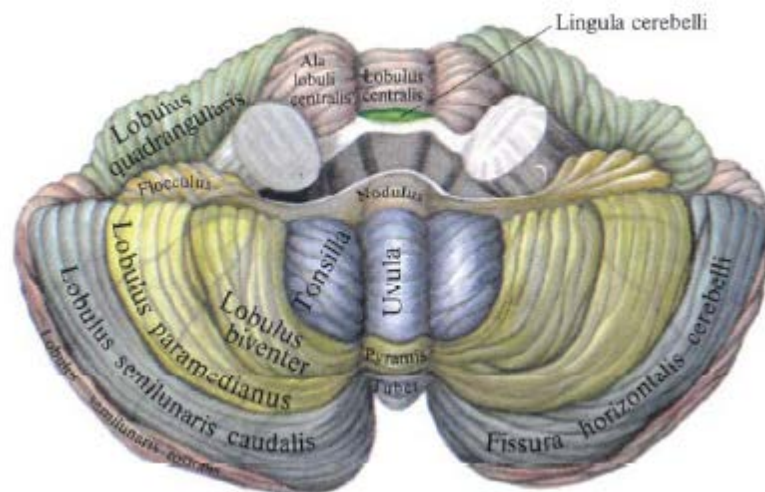
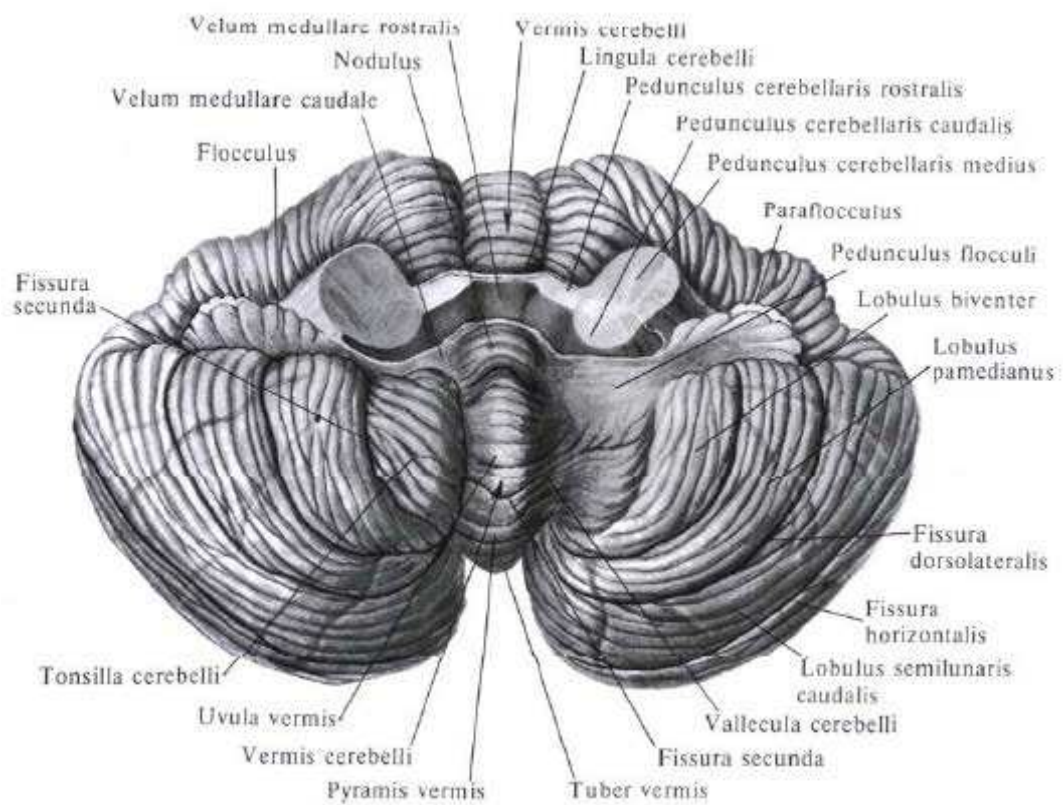




# YZKY BEÝNI

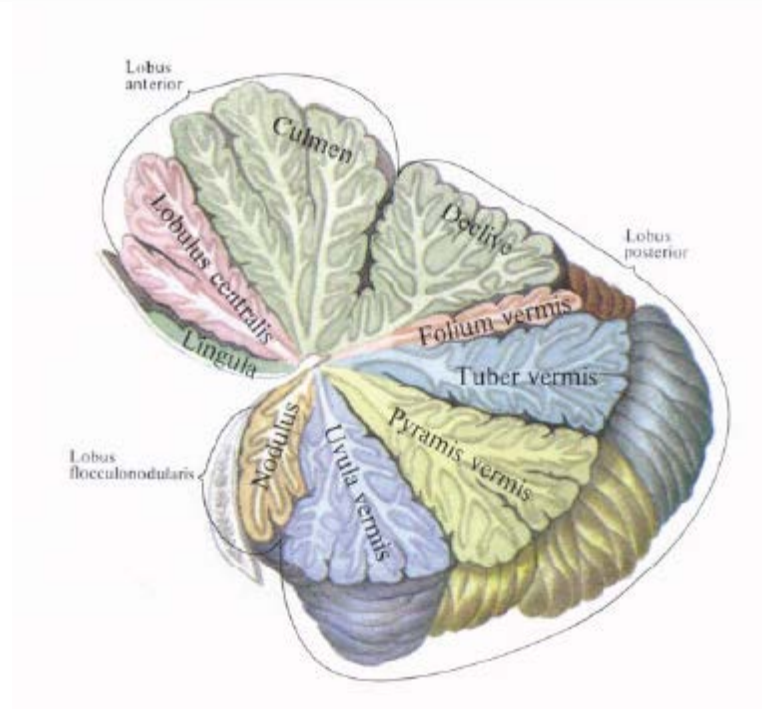


# BEÝNIJIK



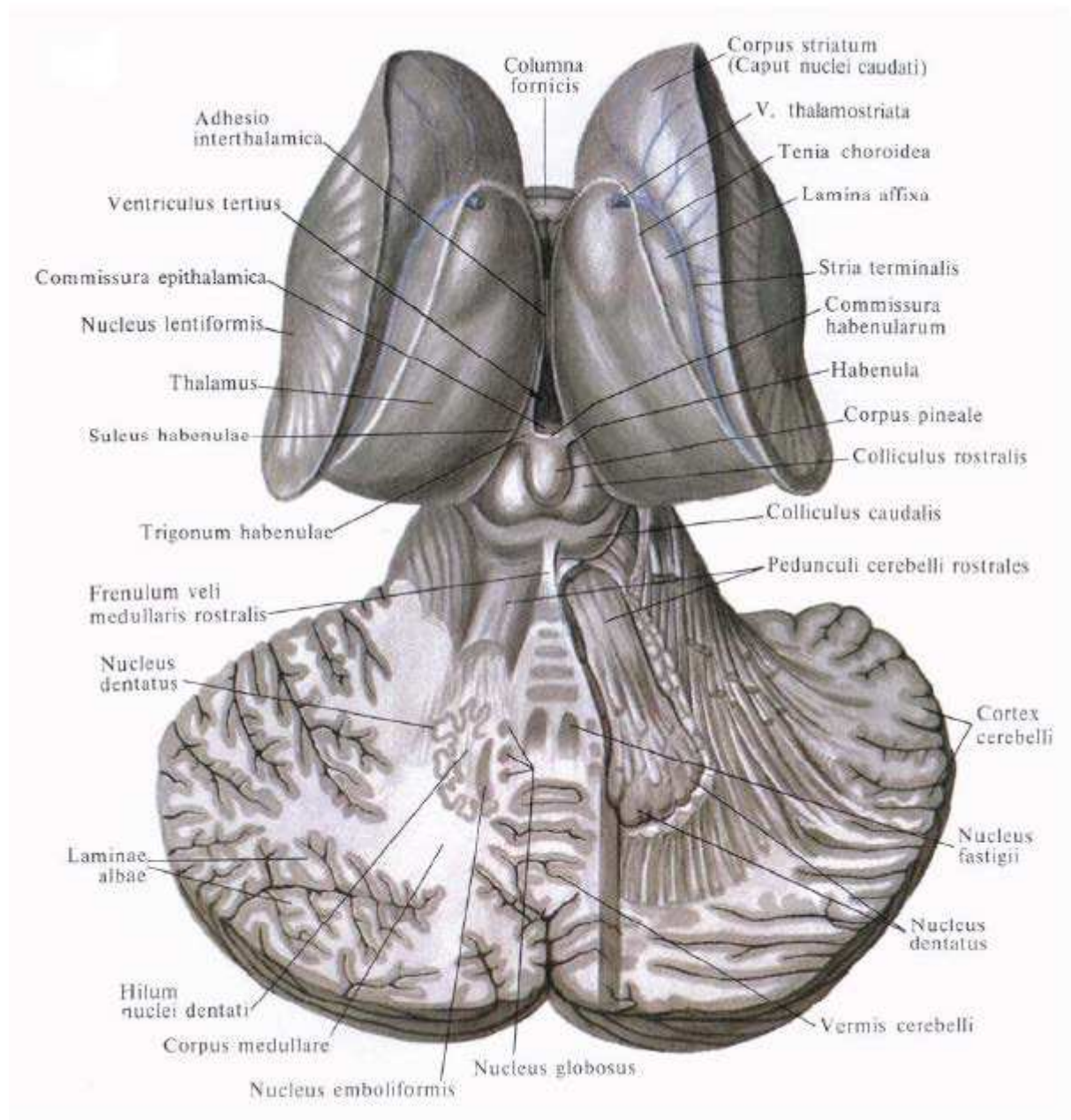
This anatomical diagram illustrates the cerebellum, highlighting its highly folded surface (folia) and internal structure. The diagram is labeled with the following parts:

- Vermis cerebelli
- Laminae albae
- Corpus medullare
- Lobulus semilunaris rostralis
- Fissura horizontalis cerebelli
- Lobulus semilunaris caudalis
- Lobulus paramedianus
- Hemisphaerium cerebelli
- Vermis
- Hemisphaerium cerebelli
- Lobulus biventer
- Fissura secunda
- Tonsilla
- Nodus
- Plexus choroideus ventriculi quarti
- Velum medullare caudale
- Velum medullare rostralis
- Tegmen ventriculi quarti

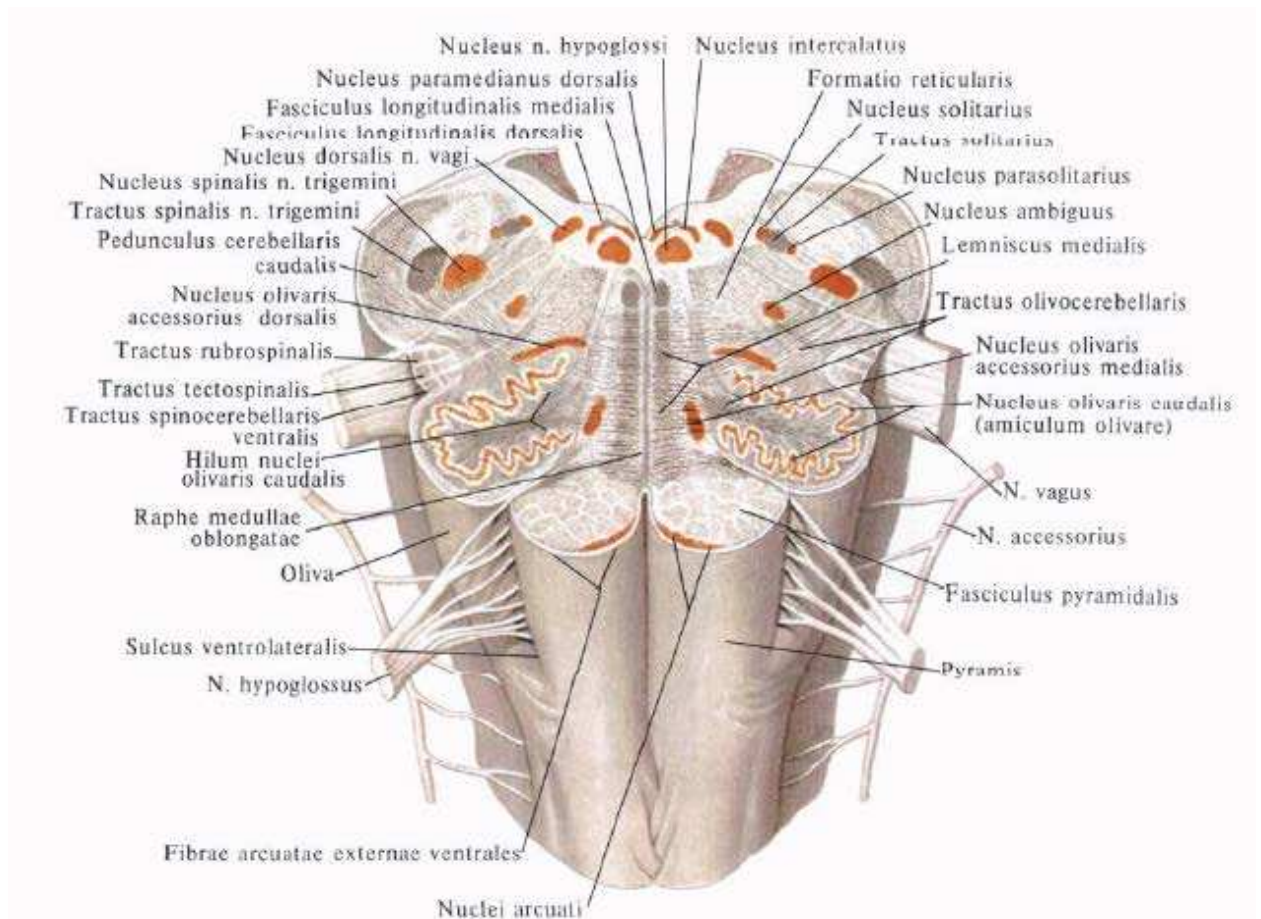
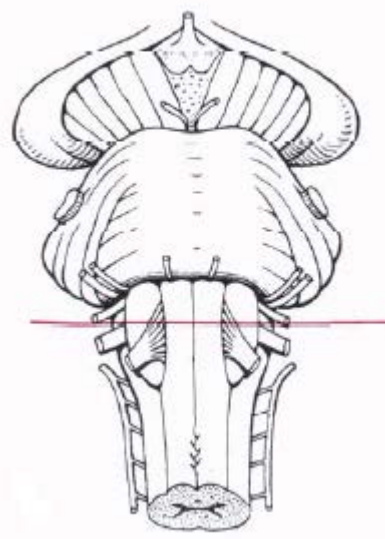
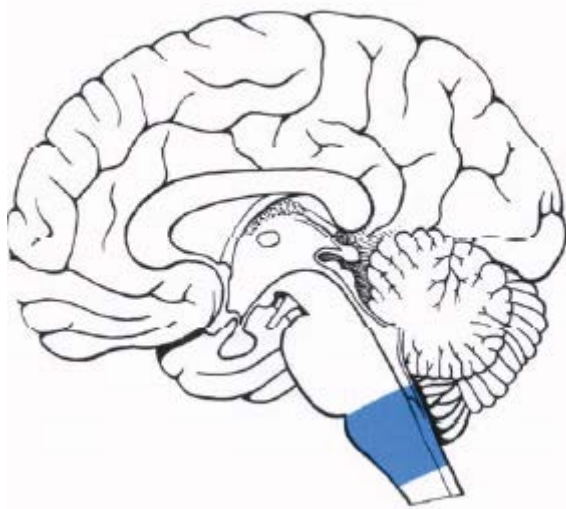




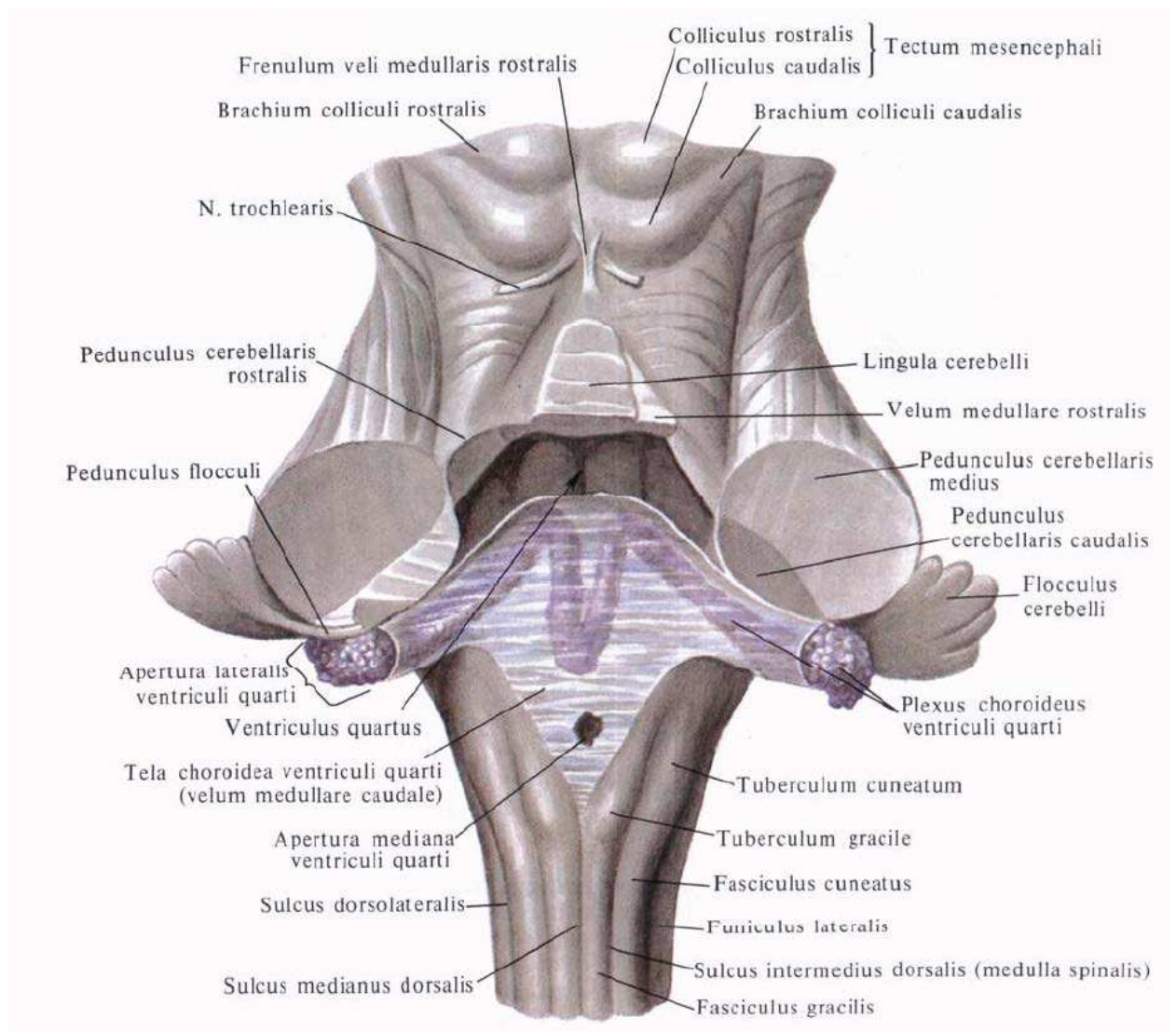
# BEÝNIJIK WE ORTA BEÝNINIŇ GAPAGY



# SÜYRİ BEYİNİ

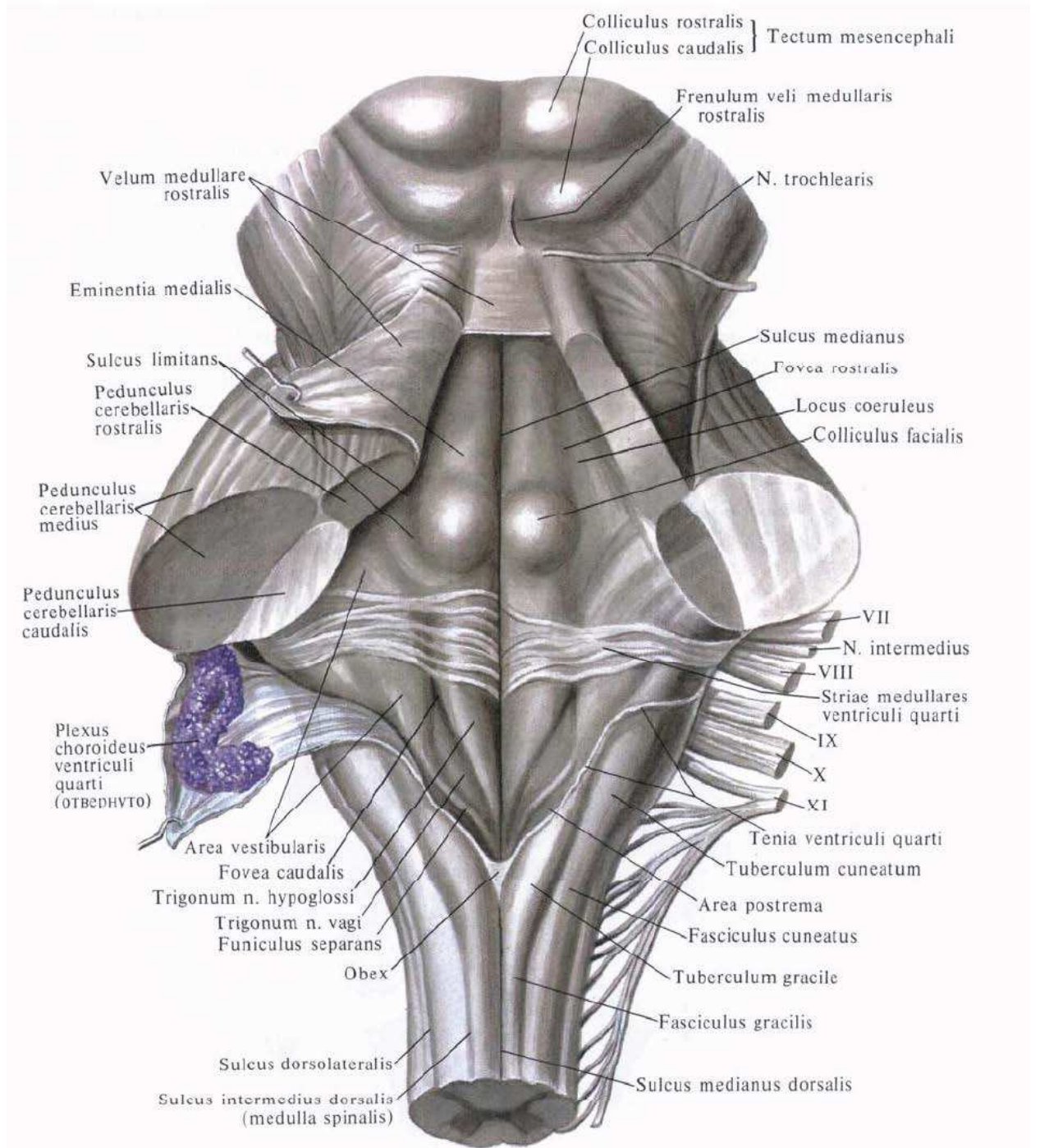


# DÖRDÜNJI GARYNJYK

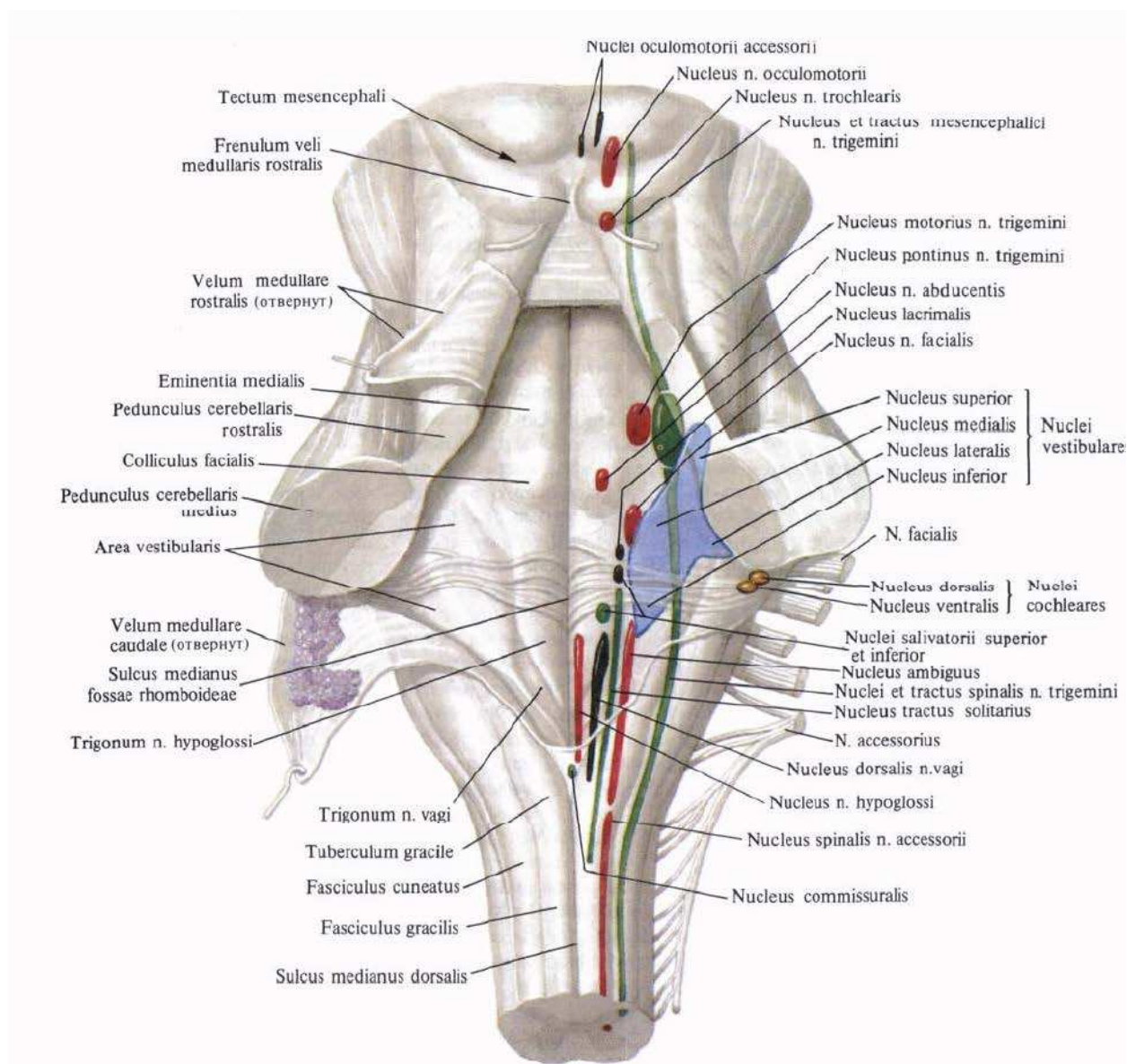




# ROMB GÖRNÜŞLİ OYU

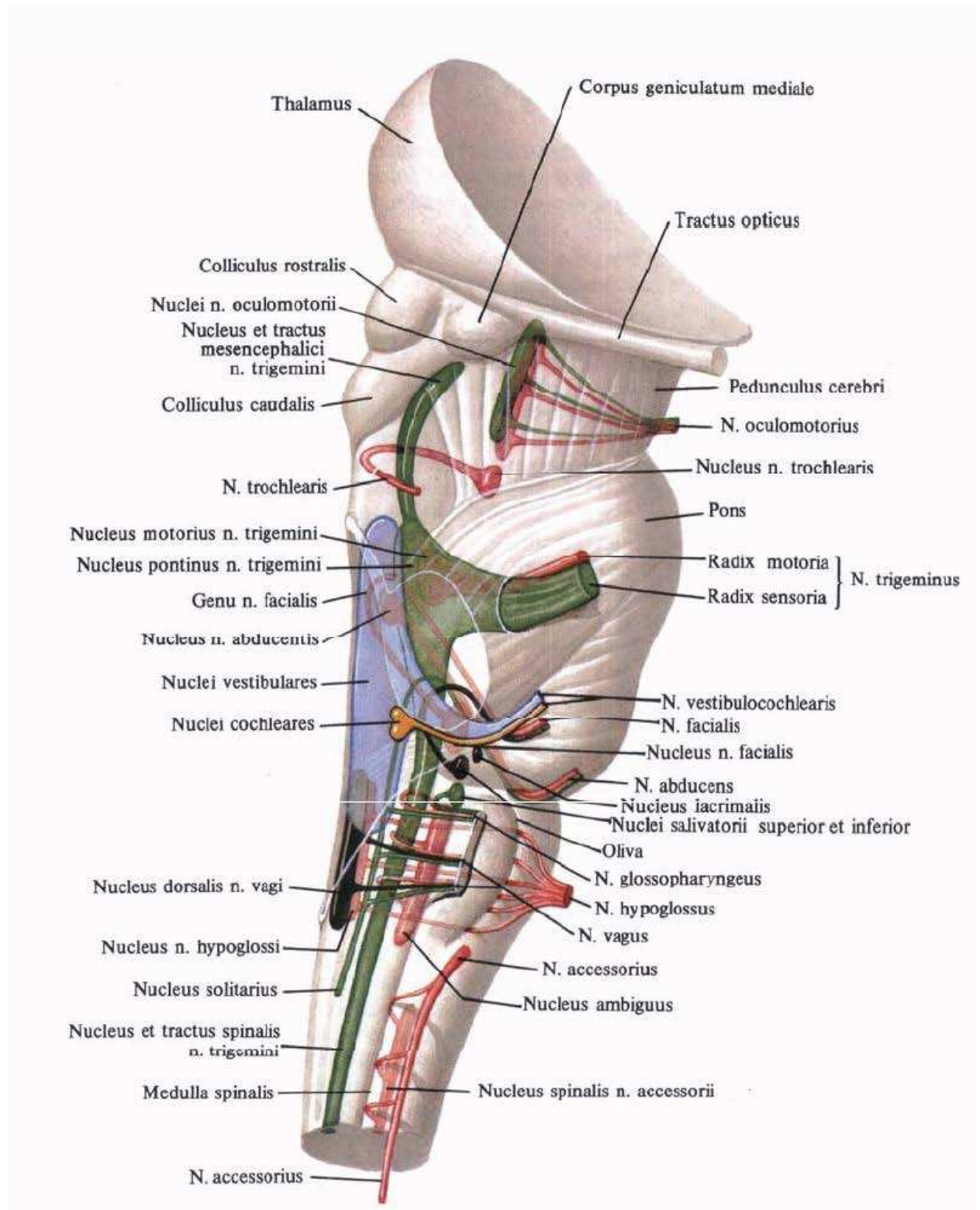


# KELLEÇANAK NERWLERİN MAÑYZLARY



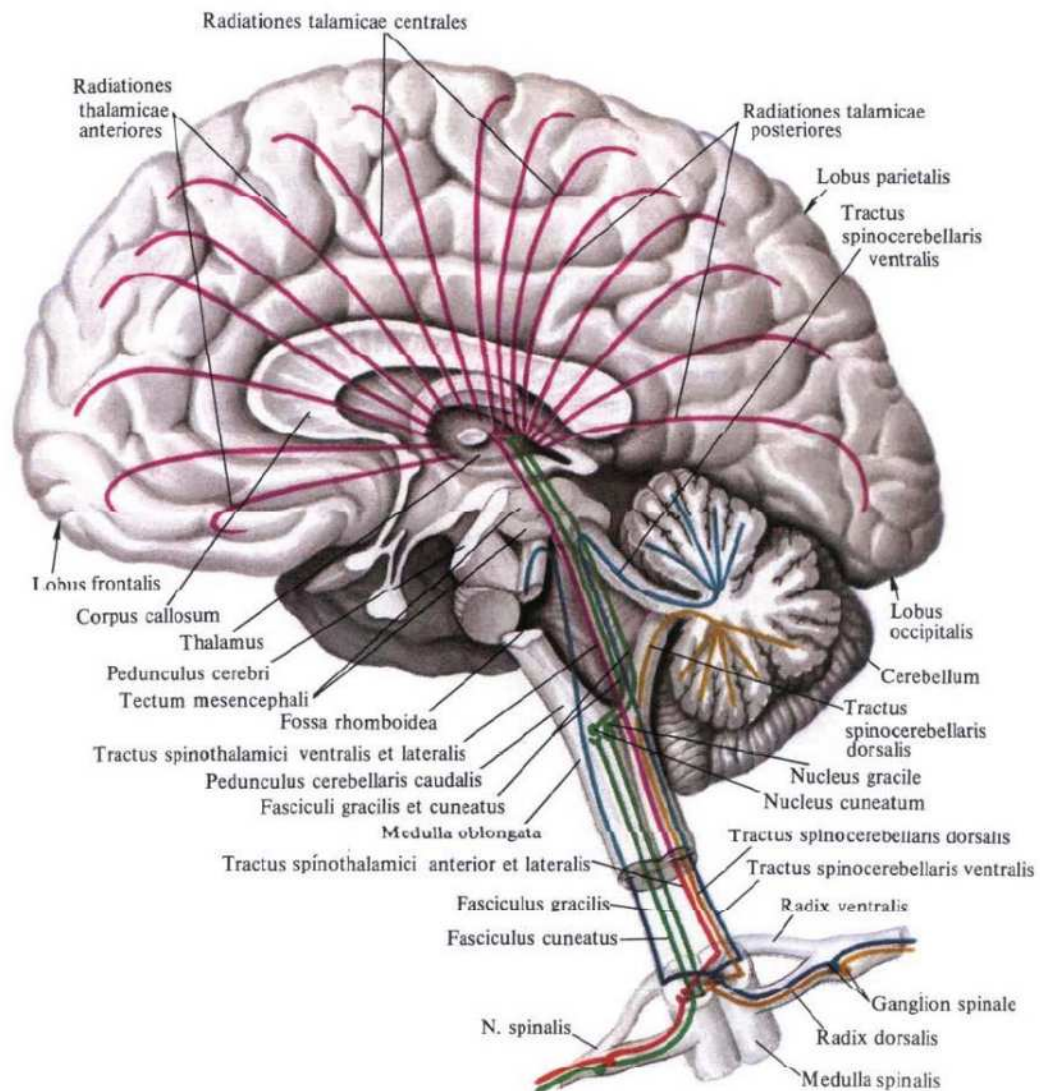


# KELLEÇANAK NERWLERİN MAÑYZLARY

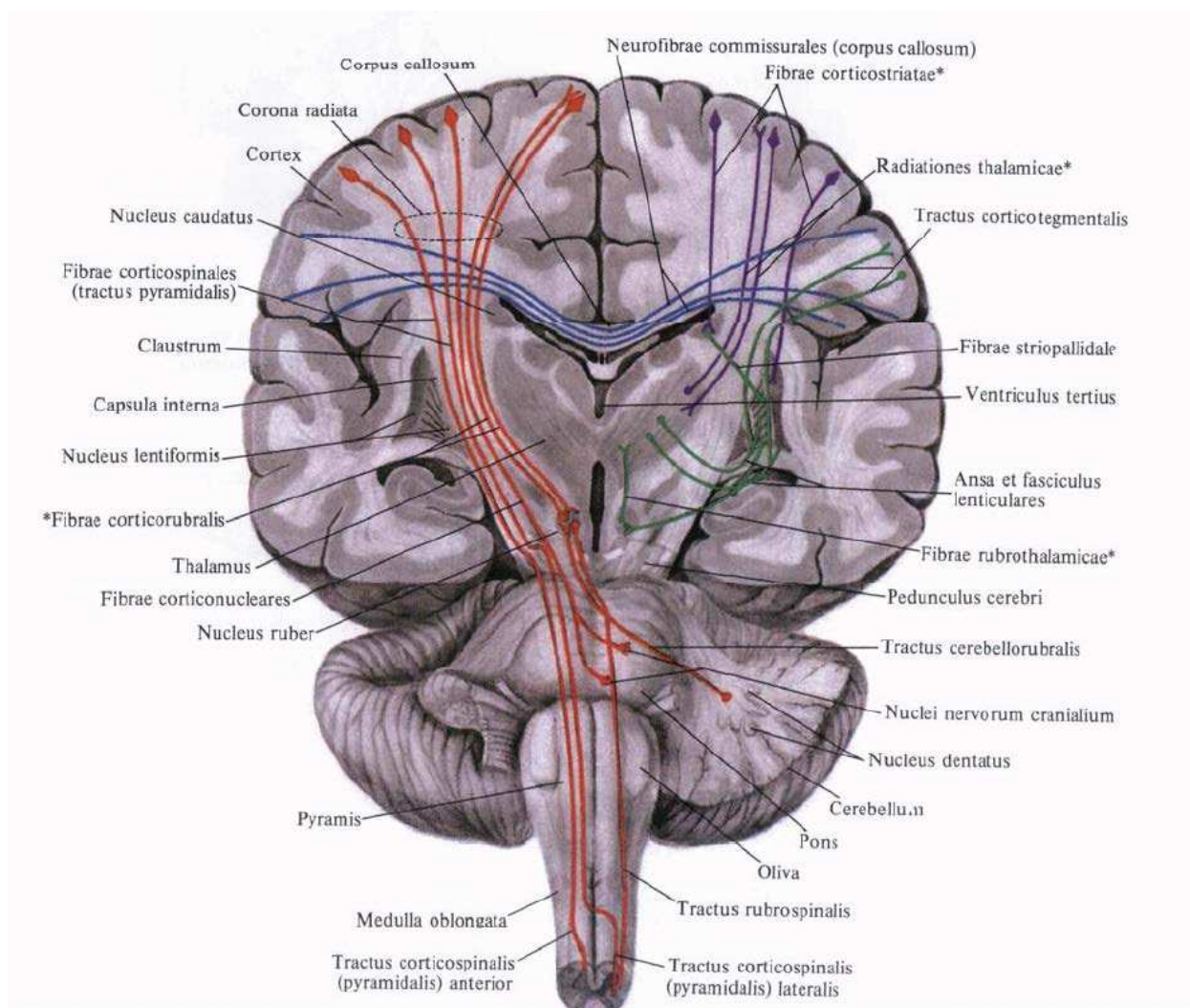




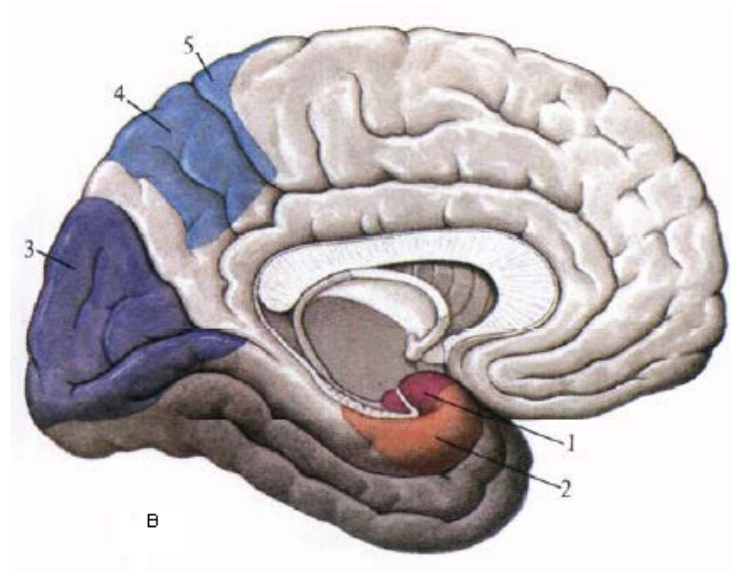
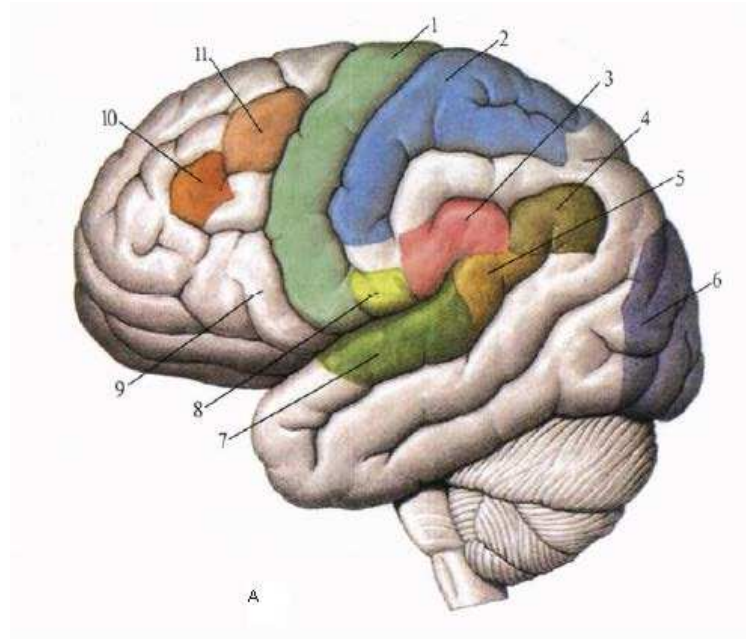
# PROEKSION YÓLLARY



# Proeksion ýollary



# ULY BEÝNINIŇ GABYGynyň ANALIZATORLARYnyň MAŇYZLARY



## **A-ýokarky gapdal üsti:**

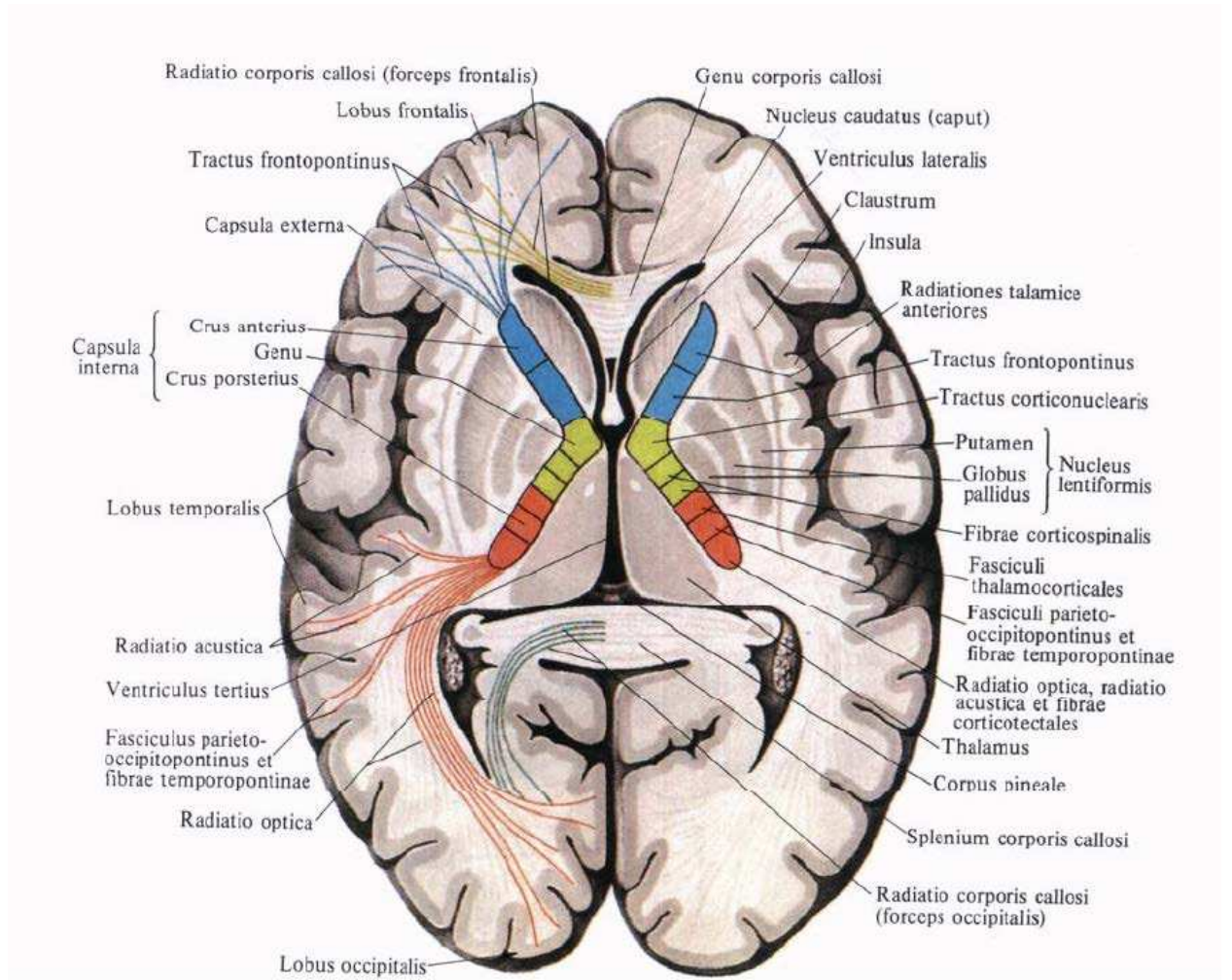
- |   |  |
|---|--|
| 1-hereketlendiriji analizatoryň merkezi                                 | 2-deri analizatorynyň maňyzy             |
| 3-kombinirlenen maksada laýyk hereketleriniň merkezi                    |  |
| 4-ýazuwyň görüň analizatory   | 5-gepleýşiň eşiđiđ analizatory           |
| 6-görüş analizatory   | 7-eşiđiđ analizatory                     |
| 8-tagam duýuş analizatory   | 9-gepleýşiň hereketlendiriji analizatory |
| 10-kelläniň we gözün deň öwürmekliginiň hereketlendiriji analizatorlary |  |
| 11-ýazuwyň hereketlendiriji analizatory                                 |  |

## **B-medial we aşaky üsti:**

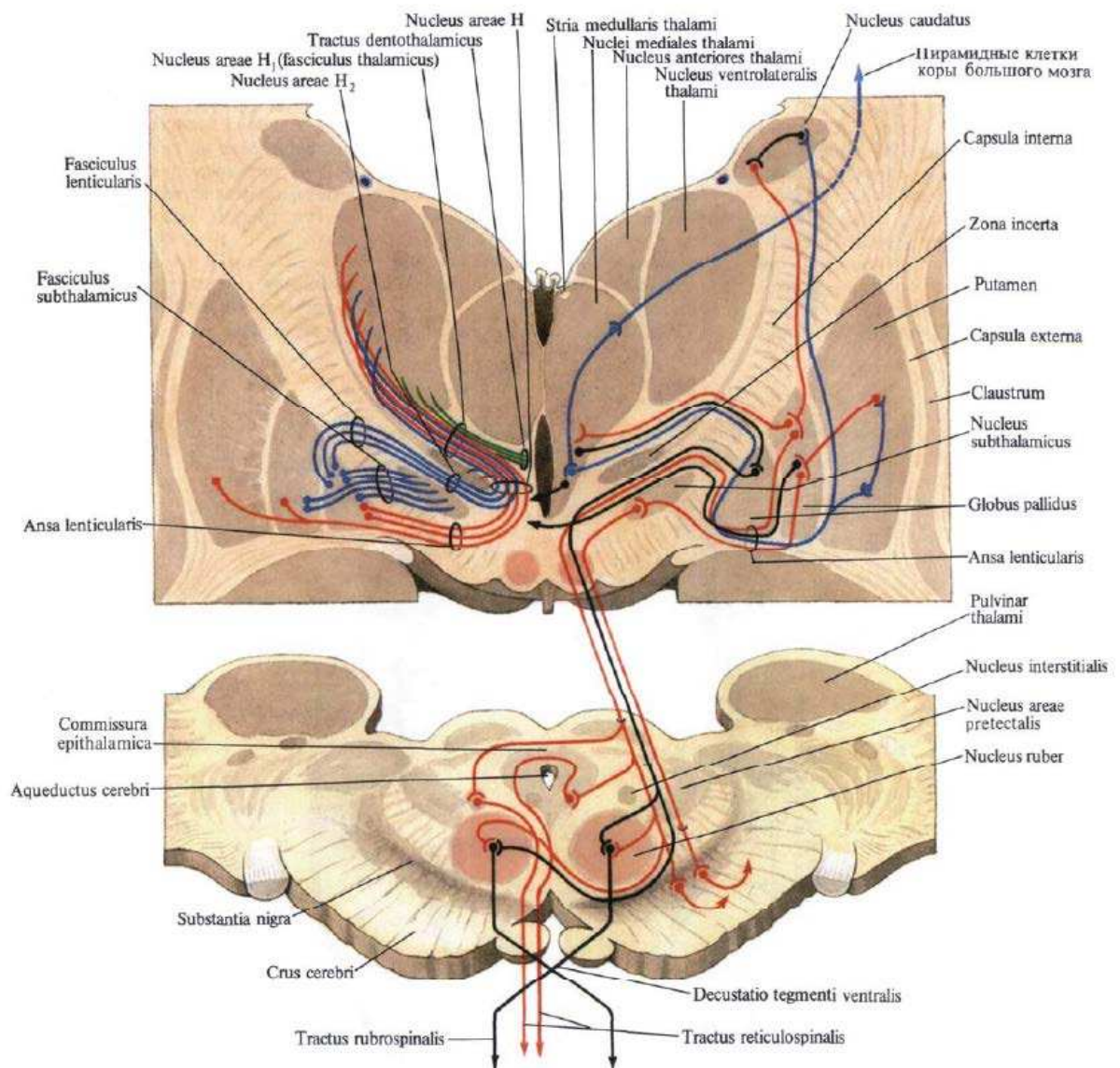
- |                              |                                  |
|------------------------------|----------------------------------|
| 1-tagam duýuş analizatory    | 2-ys alyş analizatory            |
| 3-görüş analizatory          | 4-stereognoz duýujylygyň merkezi |
| 5-deri analizatorynyň maňyzy |                                  |



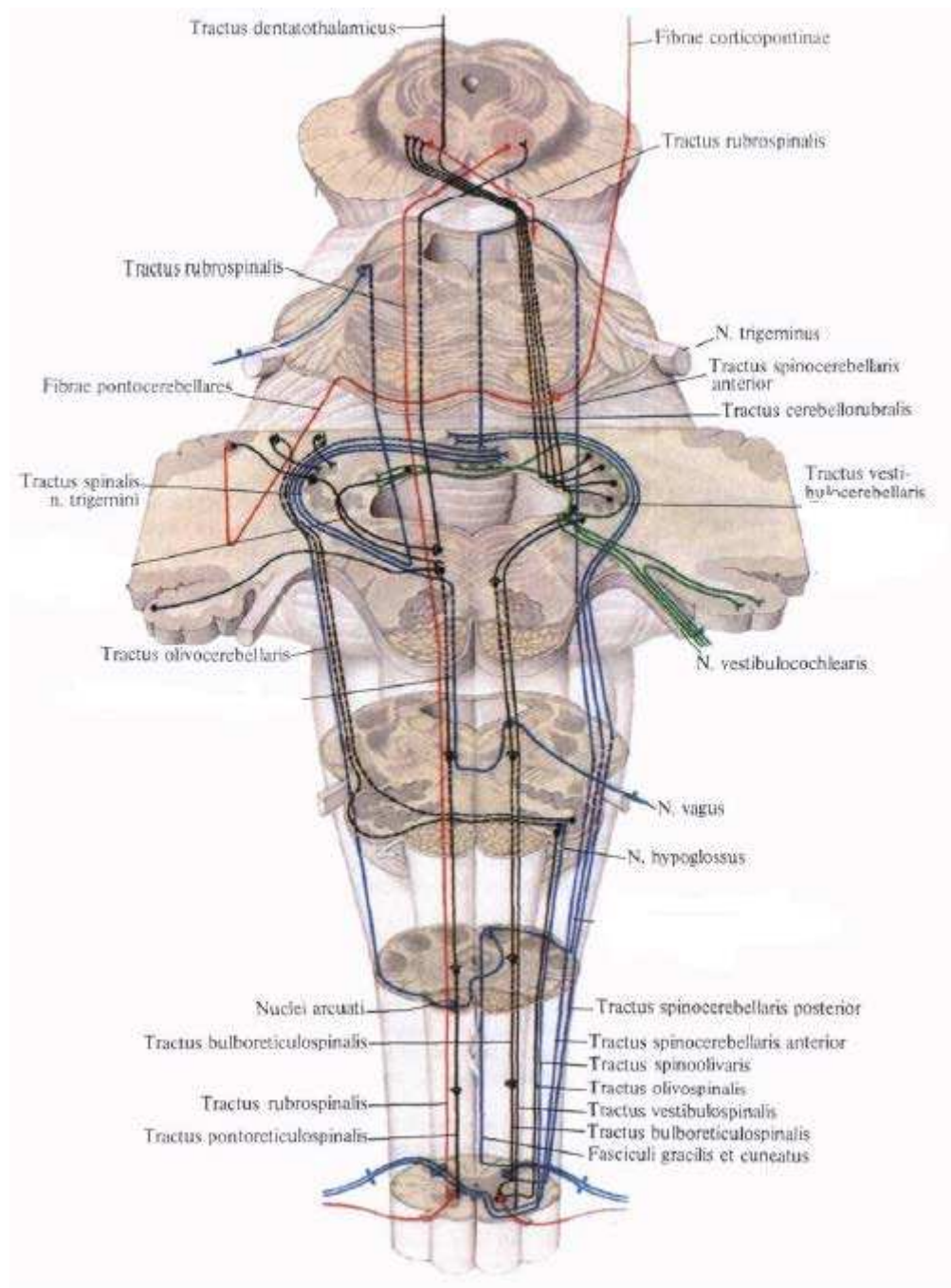
# IÇKI KAPSULA



# İÇKI KAPSULASYNÝŇ WE BEÝNI AÝJYKLARYNYŇ GEÇIRIJI ÝOLLARY

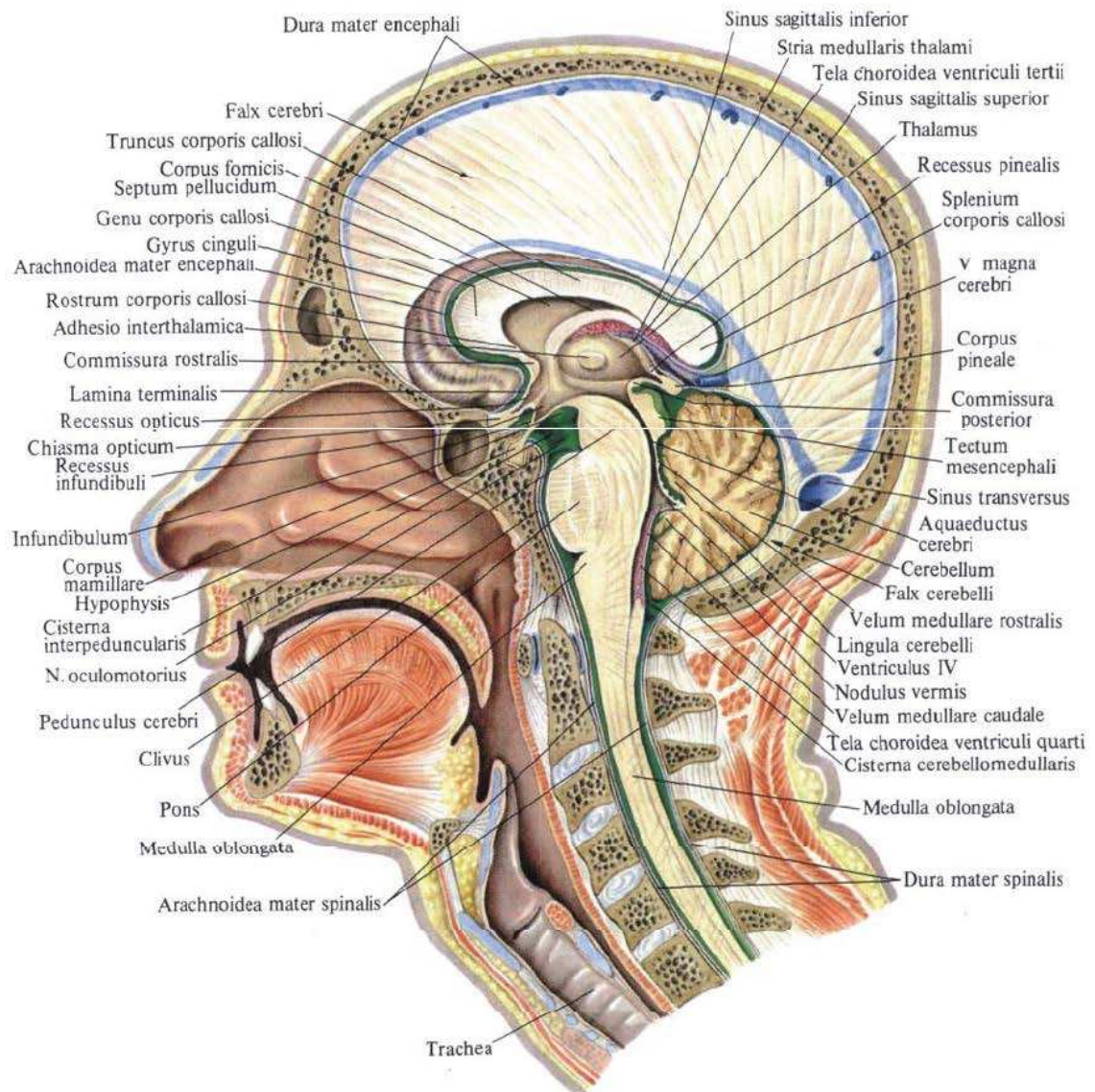


# BEÝNI SÜTÜNINIŇ WE BEÝNIJIGIŇ GEÇIRIJI ÝOLLARY





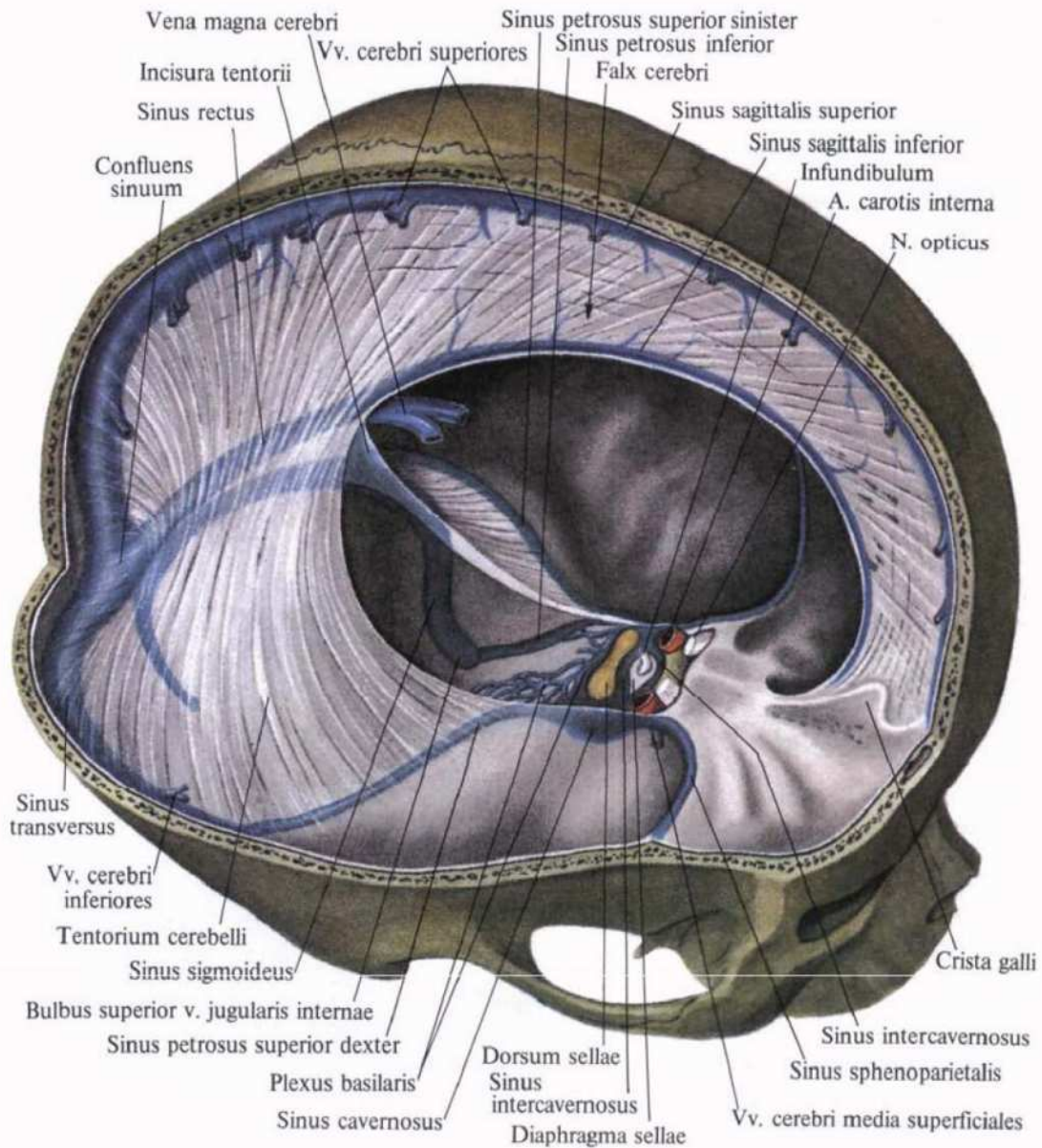
# KELLE WE OŇURGA BEÝNINIŇ PERDELERI



This anatomical diagram illustrates a cross-section of a vertebra, highlighting the spinal cord and its associated structures. The central feature is the spinal cord, which is surrounded by the meninges (dura mater, arachnoid mater, and pia mater) and the subarachnoid space containing cerebrospinal fluid. The spinal cord is divided into the substantia grisea (gray matter) and the substantia alba (white matter). The posterior horn of the gray matter is visible, along with the posterior root of the spinal nerve. The anterior root of the spinal nerve is also shown, along with the anterior horn of the gray matter. The diagram also shows the vertebral body, the intervertebral foramen, and the vertebral canal. The spinal cord is shown in a cross-section, with the posterior horn and the anterior horn visible. The posterior root of the spinal nerve is shown exiting the spinal cord, and the anterior root is shown entering. The spinal nerve is shown as a combination of the anterior and posterior roots. The diagram is labeled with various anatomical structures in Latin, including the Dura mater spinalis, Plexus venosus vertebralis interni (posterior), Lig. flavum, Septum cervicale intermedium, Arcus vertebrae, Substantia grisea, Medulla spinalis, Lig. denticulatum, Radix ventralis, Ganglion spinale, Truncus n. spinalis, R. communicans, R. spinalis, Lig. longitudinale posterius, Cavitas subarachnoidea, Lig. longitudinale anterius, Corpus vertebrae, Processus spinosus, Cavitas subarachnoidea, Arachnoidea mater spinalis, Pia mater spinalis, A. spinalis posterior, Substantia alba, Radix dorsalis, Cavitas epiduralis, A. vertebralis, R. dorsalis n. spinalis, R. ventralis, Vv. vertebrales, Ganglion trunci sympathici, R. interganglionalis, Plexus venosus vertebralis interni (anterior), and A. spinalis anterior.

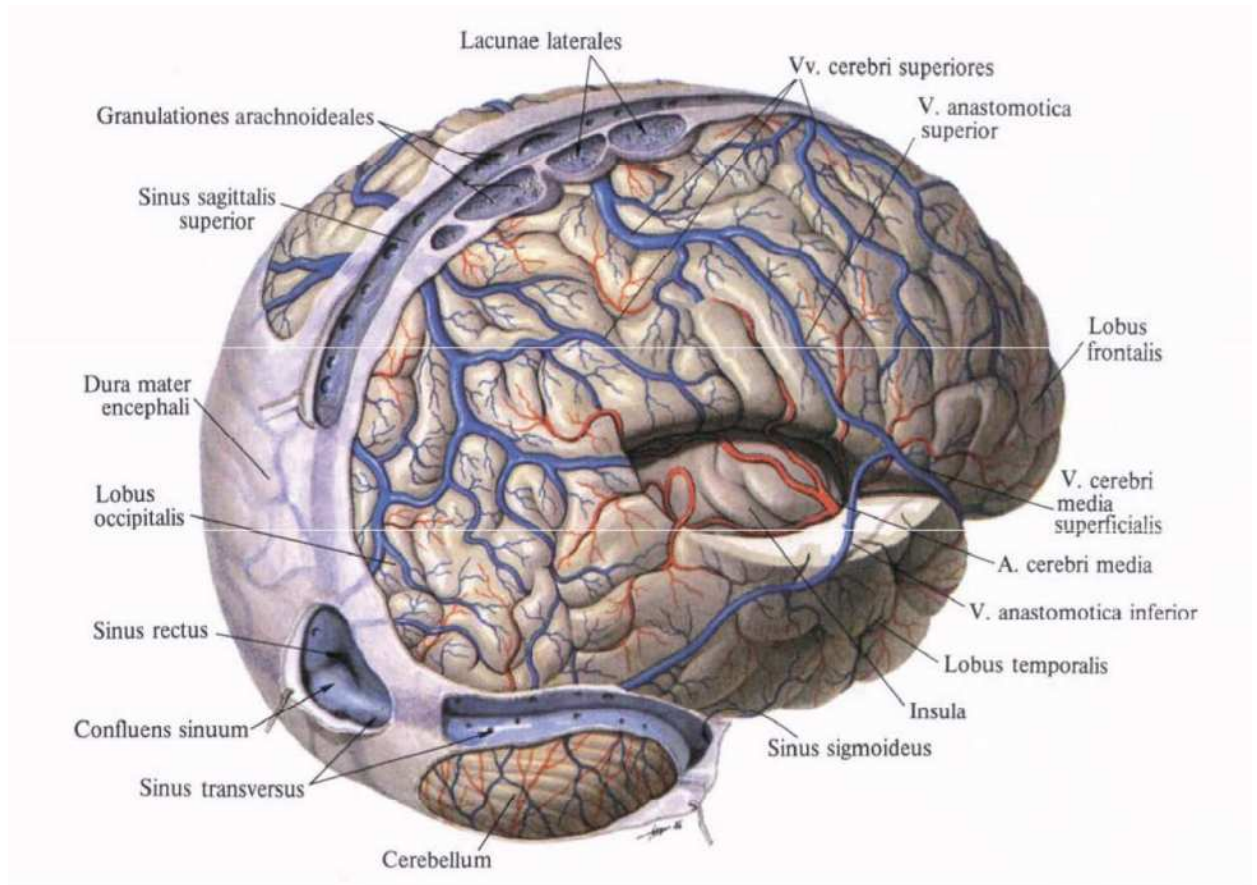


# KELLE BEÝNISINIŇ GATY PERDESI

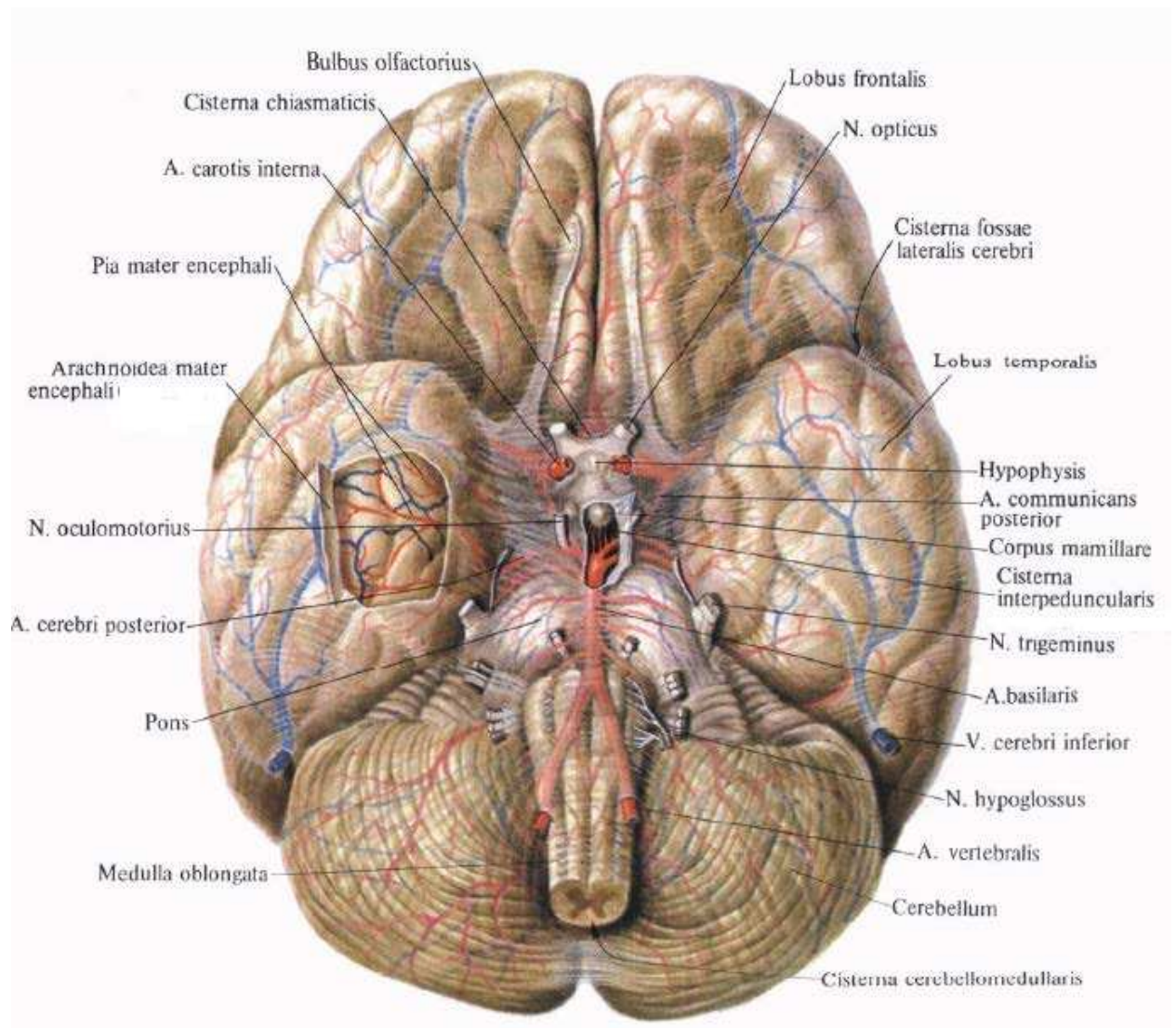




# ULY BEÝNINIŇ WENALARY



# KELLE BEÝNINIŇ KEREPLI BARDASY



# KELLE BEÝNINIŇ PERDELERI

