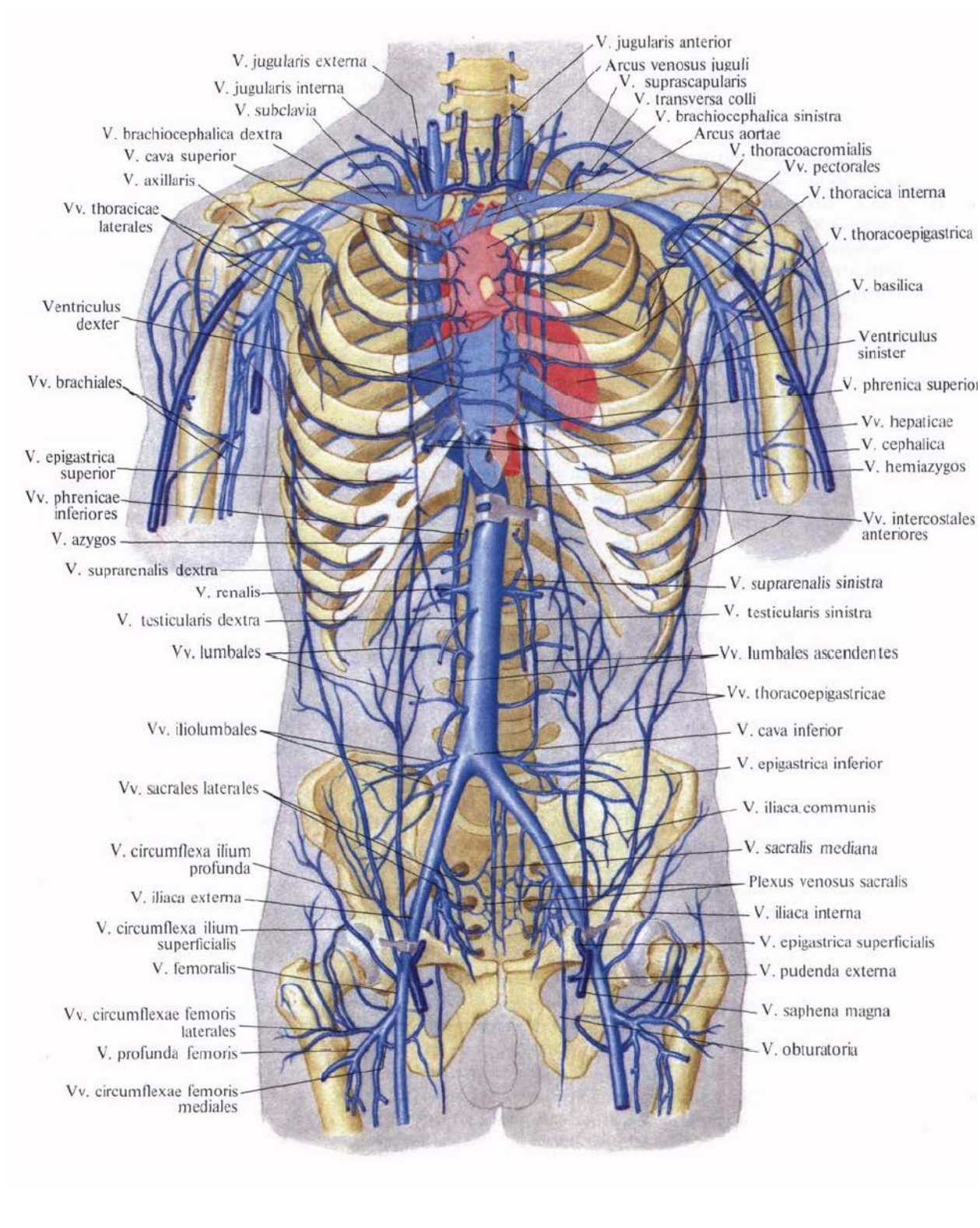
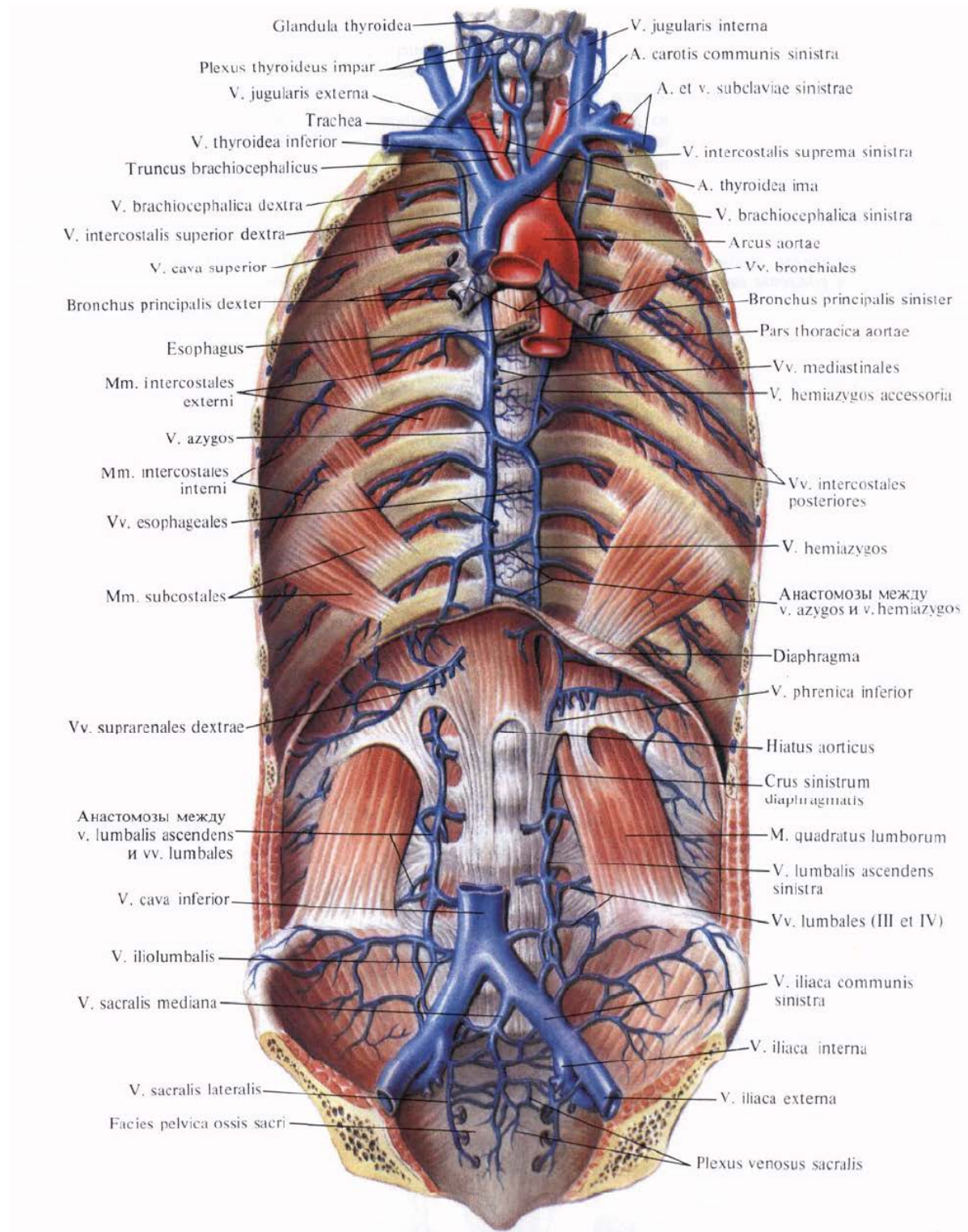


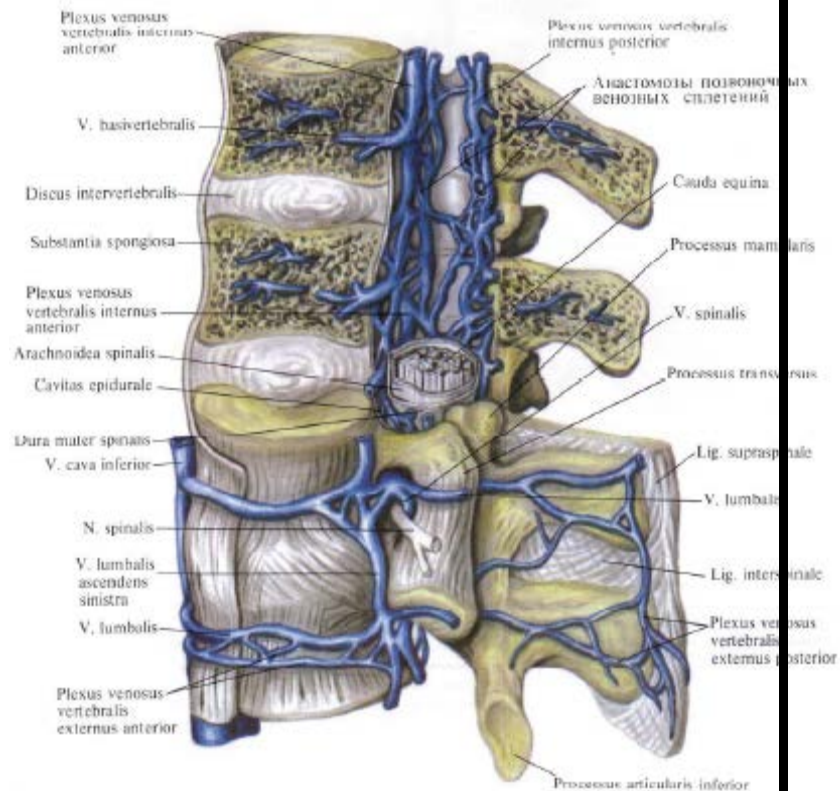
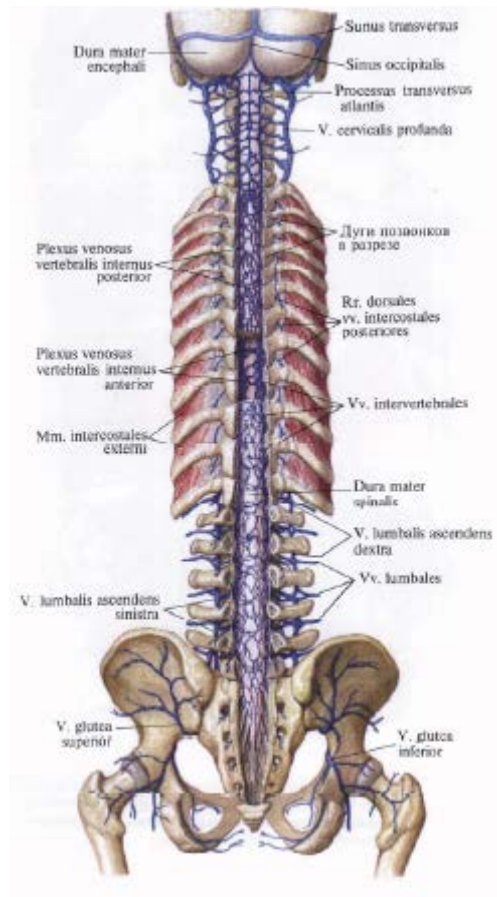
ÝOKARKY WE AŞAKY BOŞ WENALARYŇ ULGAMLARY



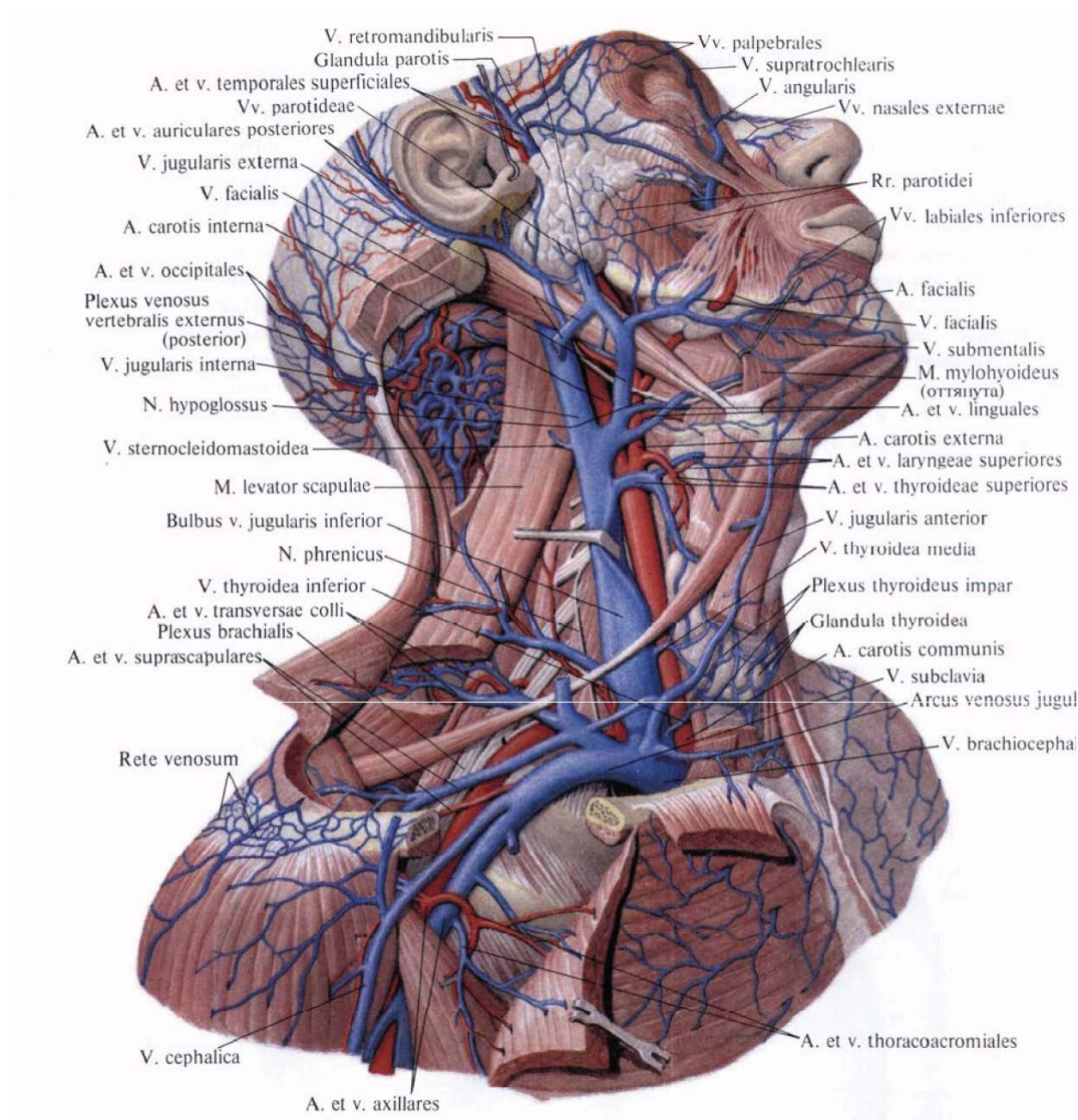
TÄK WE ÝARYMTÄK WENALARY



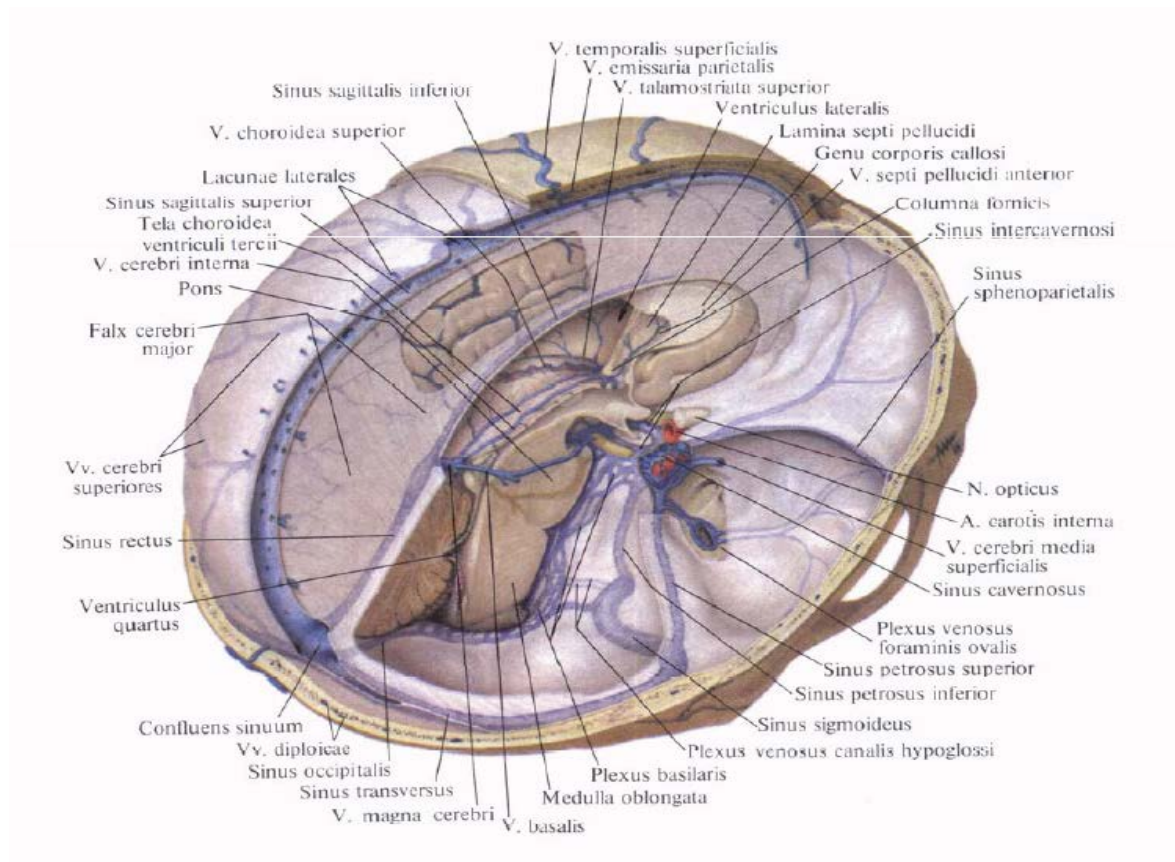
OÑURGA SÜTÜNİNİÑ WENALARY



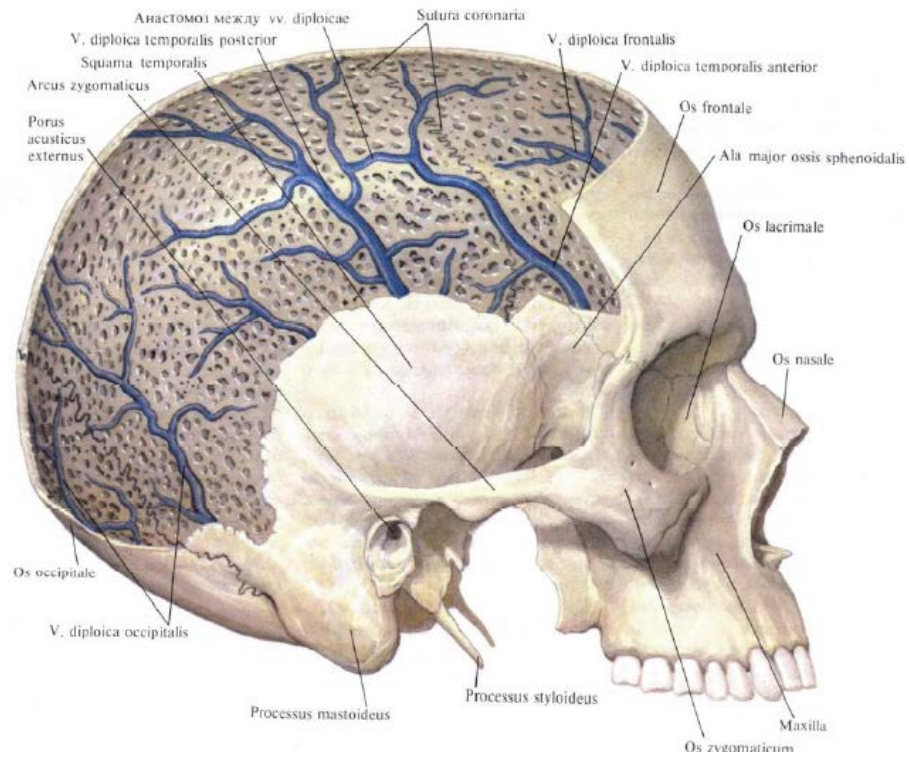
KELLÄNIŃ WE BOÝNUŃ ARTERIÝALARY WE WENALARY



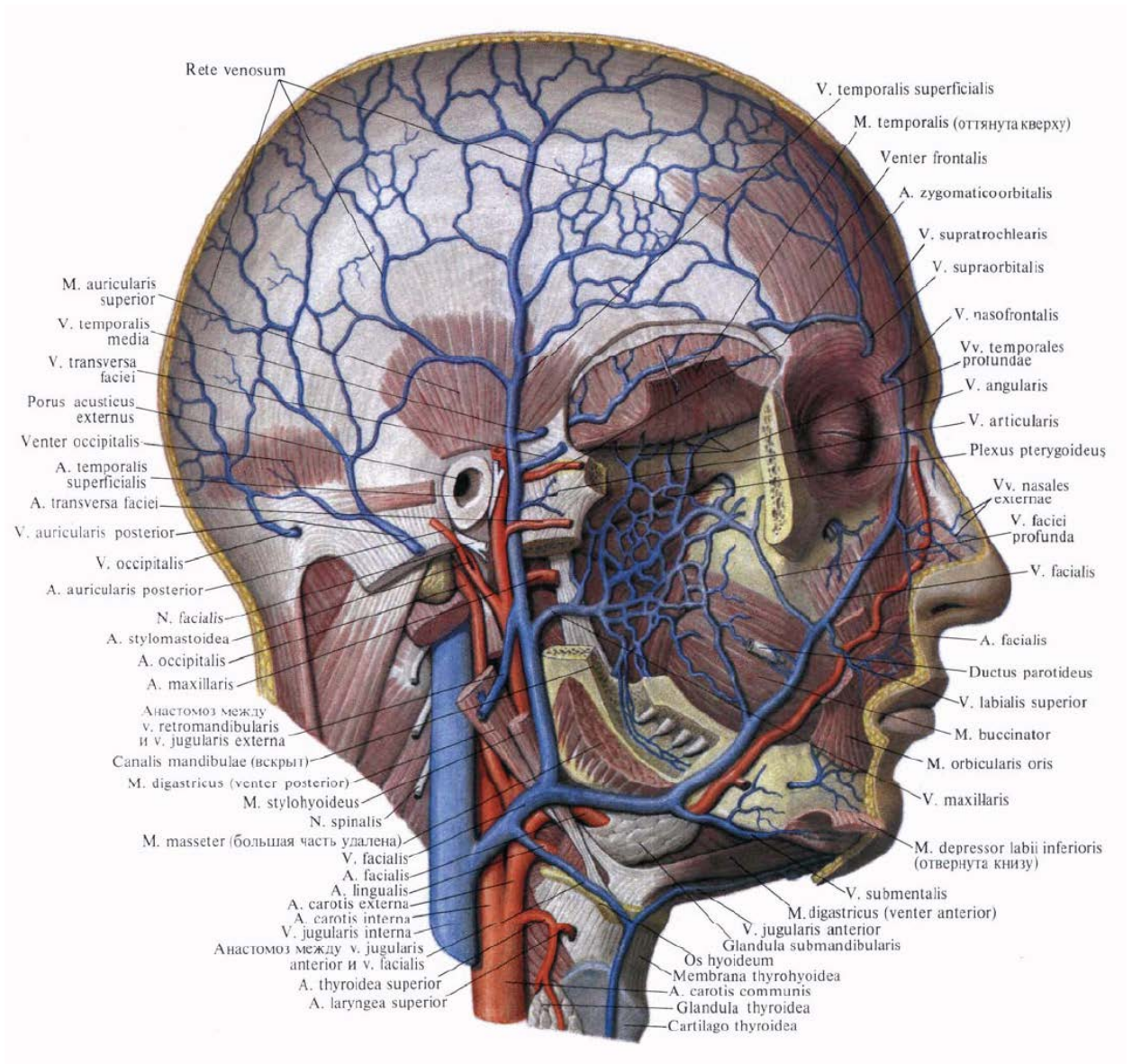
KELLE BEÝNISINIŇ GATY BARDASYNYŇ SINUSLARY



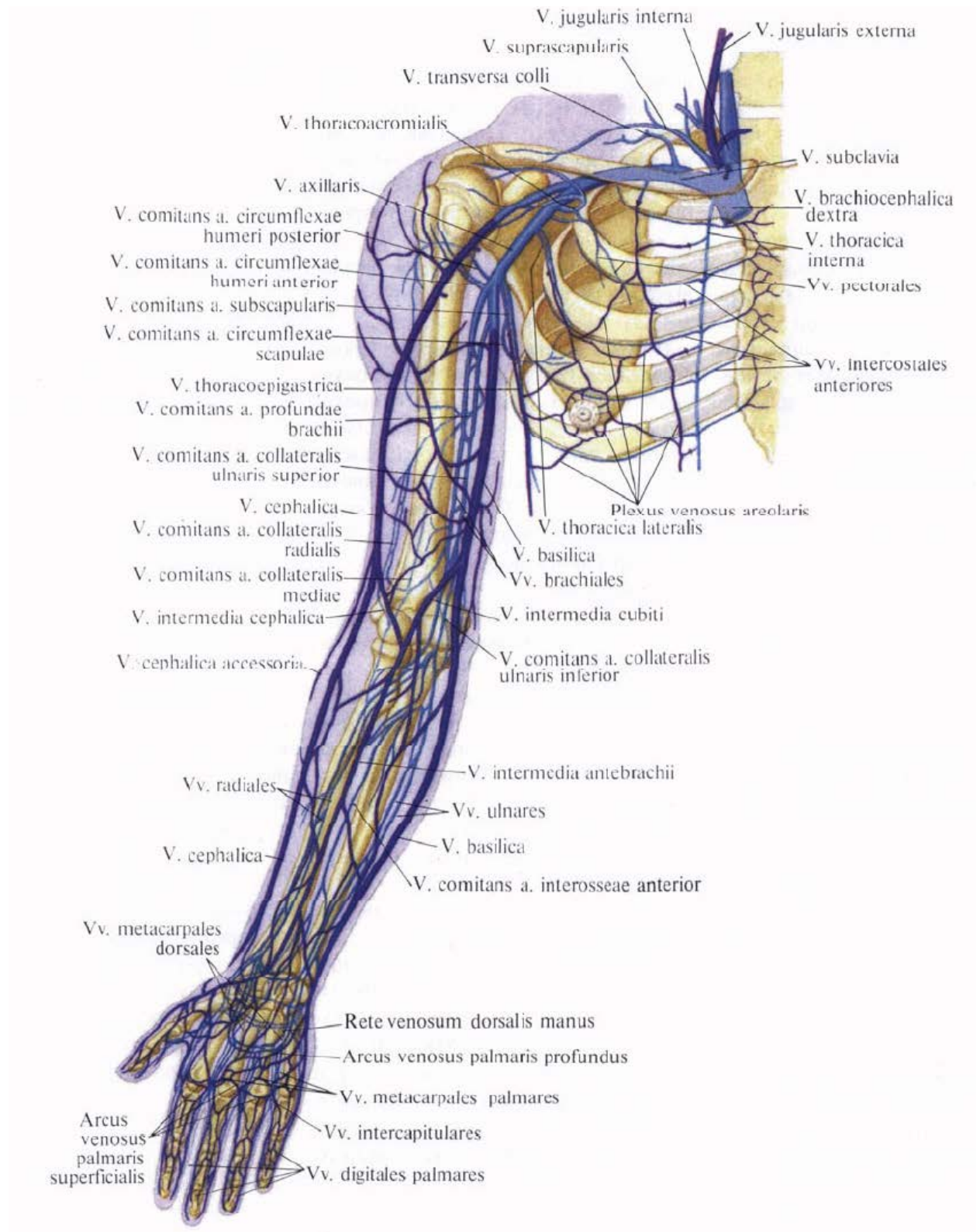
KELLEÇANAGYNYŇ SÜŇKLERINIŇ DIPLOIKI WENALARY



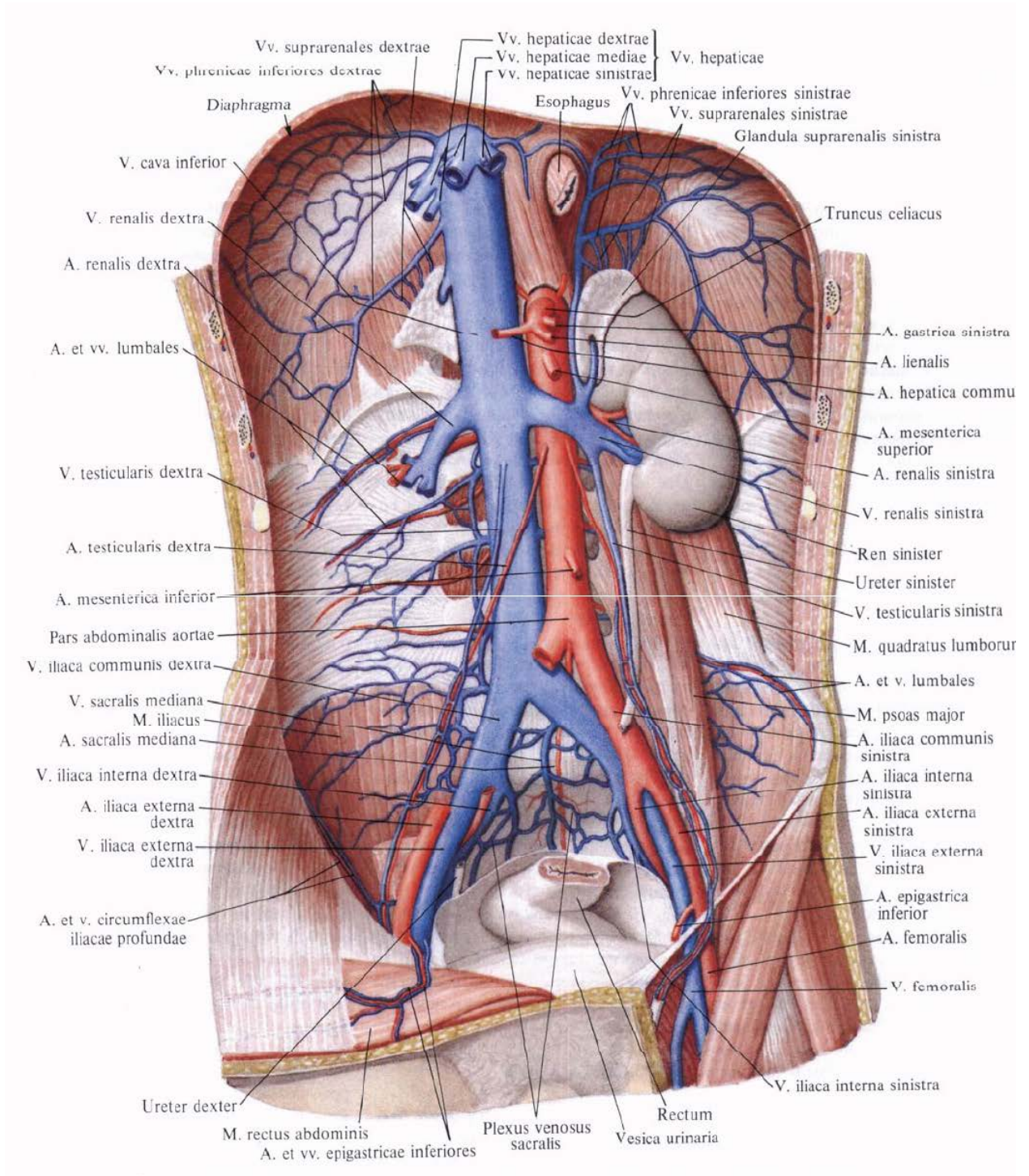
KELLE WENALARY



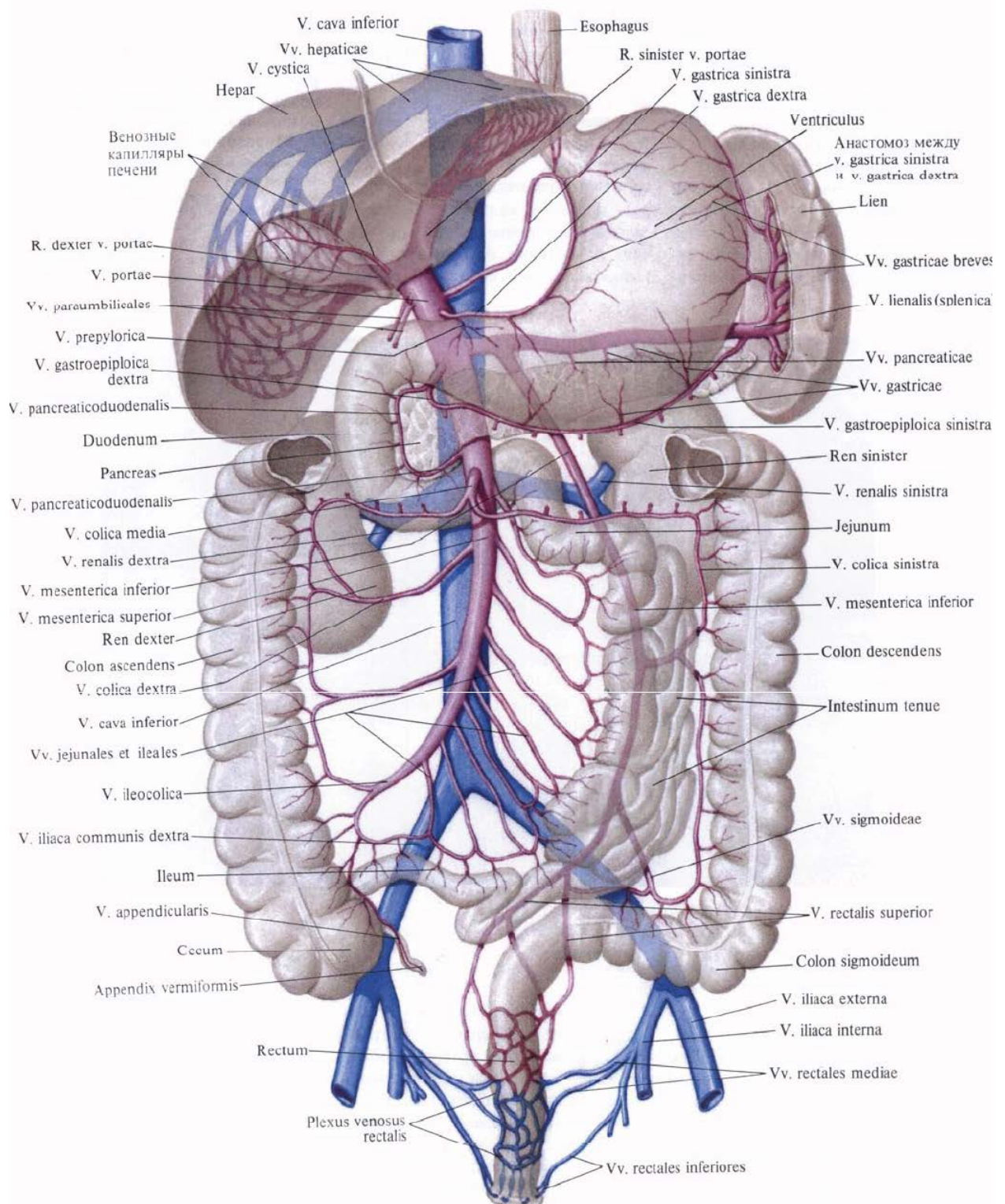
ÝOKARKY AHYRYŇ (ELIŇ) WENALARY



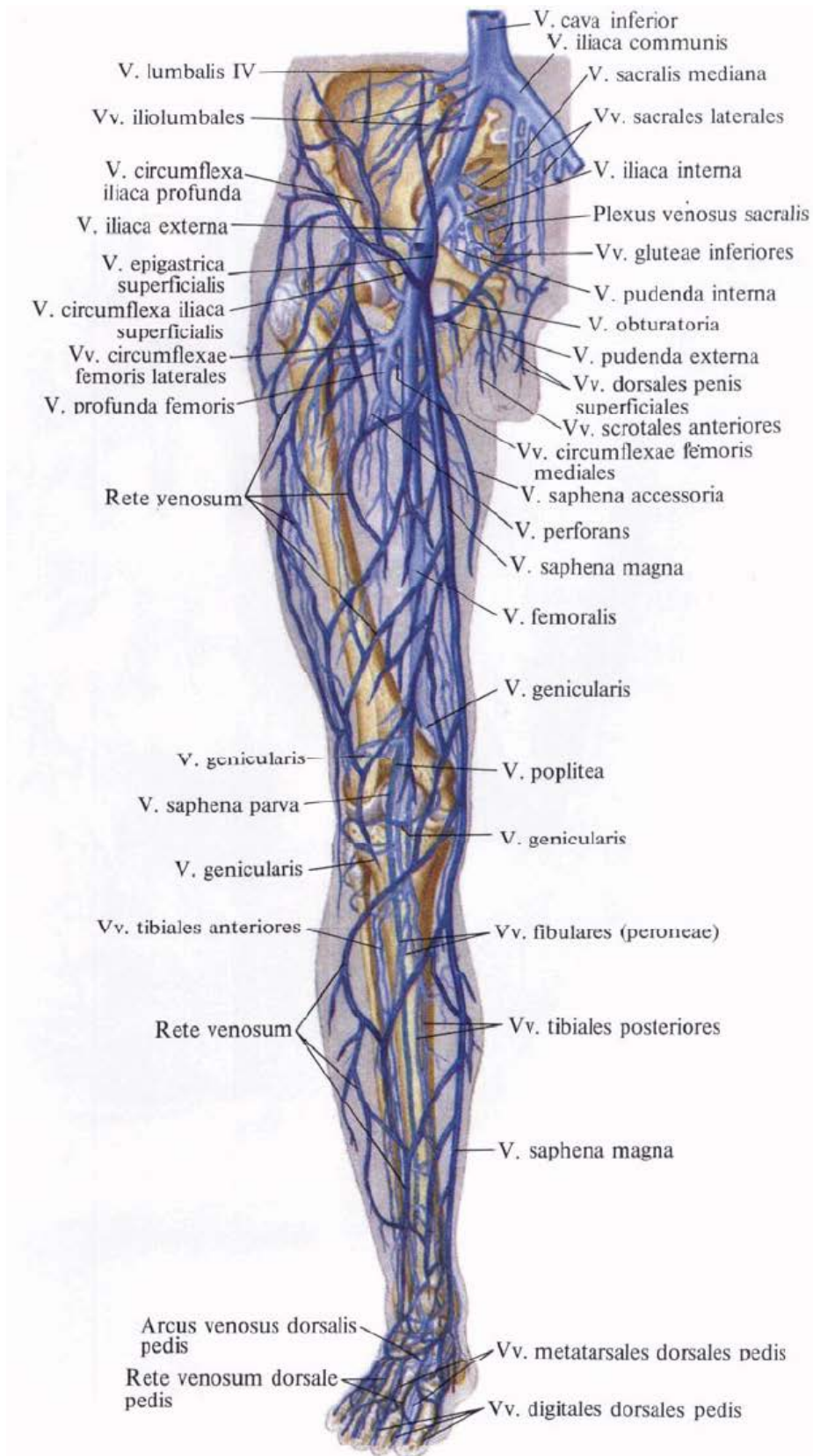
AŞAKY BOŞ WENASY



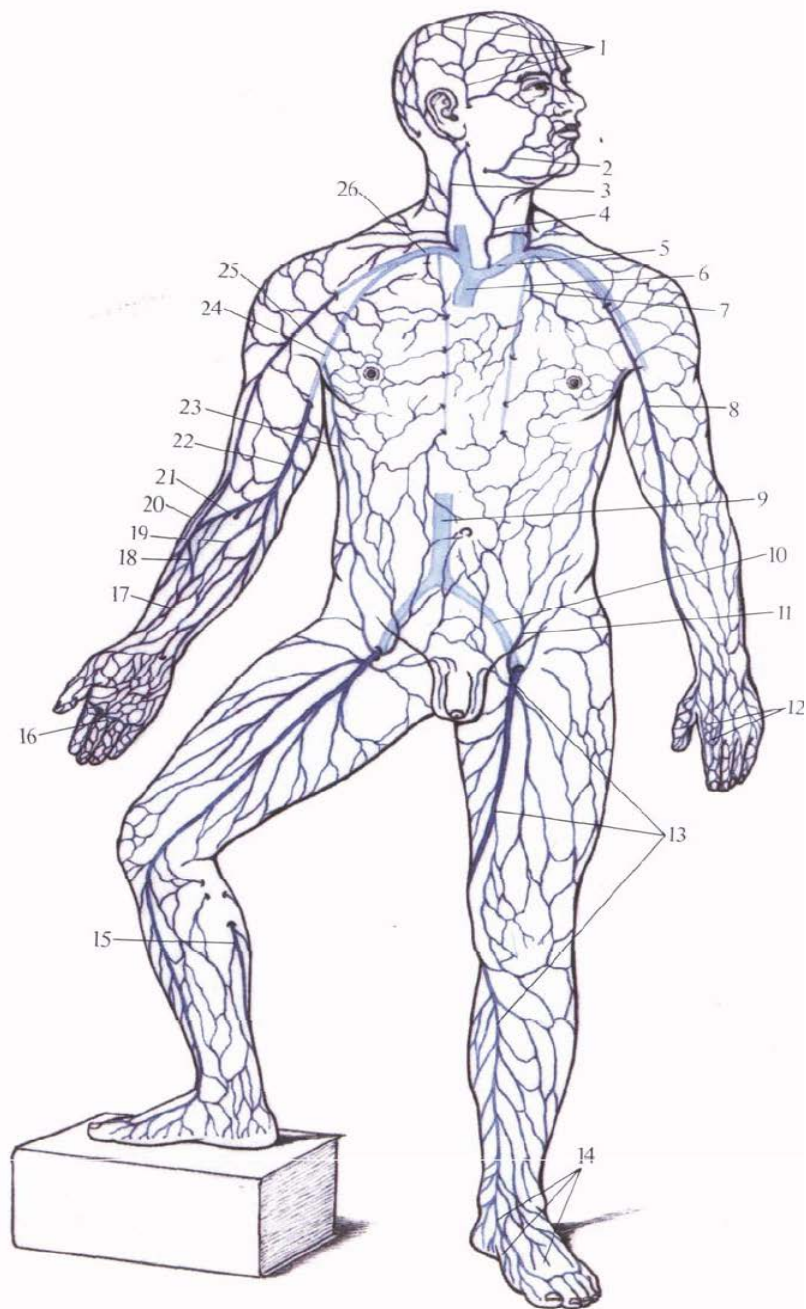
DERWEZE WENASYNYŇ ULGAMY



AŠAKY AHYRYŇ (AÝAGYŇ) WENALARY

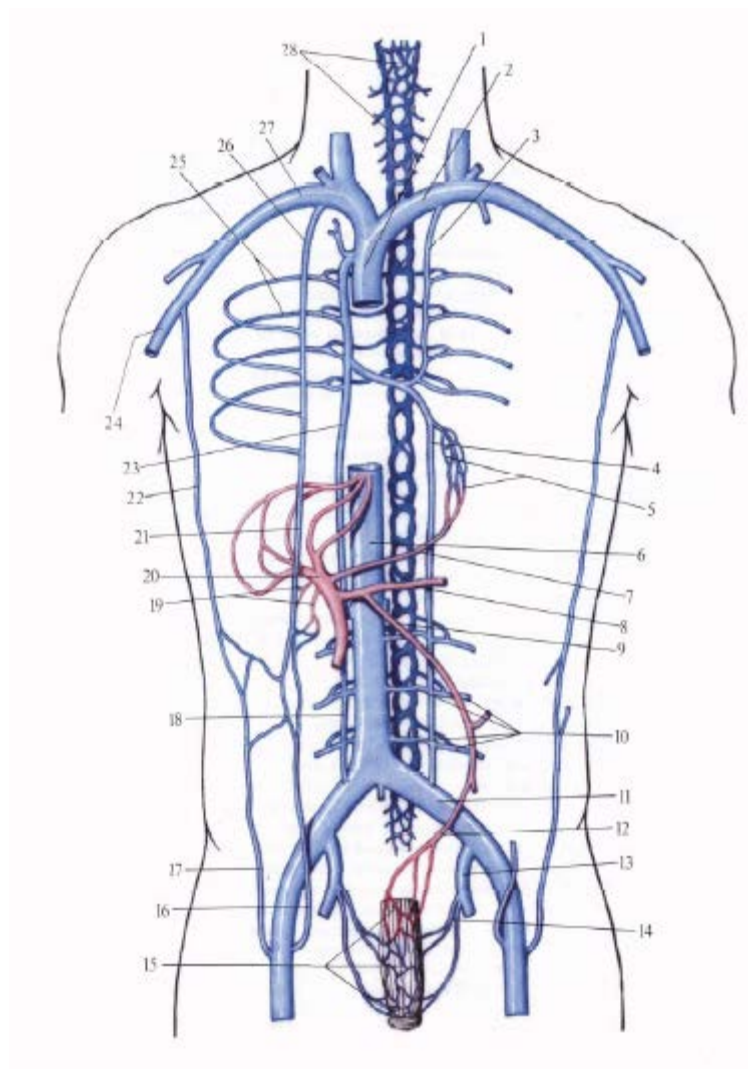


ÝÜZLEÝ WENALARY (SHEMASY)



1—vv. temporales superficiales; 2—v. facialis;
 3—v. jugularis externa; 4—v. jugularis anterior;
 5—v. brachiocephalica sinistra; 6—v. cava superior;
 7—v. thoracica interna; 8—v. cephalica; 9—v. cava inferior;
 10—v. iliaca communis; 11—v. epigastrica superficialis; 12—rete venosum dorsale manus;
 13—v. saphena magna; 14—rete venosum dorsale pedis;
 15—v. saphena parva; 16—arcus venosus palmaris superficialis;
 17—v. intermedia antebrachii; 18—v. intermedia cephalica;
 19—v. intermedia antebrachii; 20—v. cephalica accessoria;
 21—v. intermedia cubiti; 22—v. basilica; 23—v. thoracoepigastrica;
 24—v. axillaris; 25—v. cephalica; 26—v. subclavia.

ÝOKARKY WE AŞAKY BOŞ WENALARYŇ ANASTOMOZLARY



1 — v. cava superior; 2 — v. brachiocephalica sinistra;
3 — v. hemiazygos accessoria; 4 — v. hemiazygos;
5 — plexus venosus esophageus; 6 — v. cava inferior;

7 — v. gastrica dextra; 8 — v. lienalis; 9 — v.
mesenterica inferior; 10 — vv. lumbales; 11 — v. iliaca
communis; 12 — v. rectalis superior; 13 — v. iliaca
interna; 14 — v. rectalis media; 15 — plexus venosus
rectalis; 16 — v. epigastrica inferior; 17 — v.
epigastrica superficialis; 18 — v. lumbalis ascendens;
19 — vv. paraumbilicales; 20 — v. portae; 21 — v.
epigastrica superior; 22 — v. thoracoepigastrica;
23 — v. azygos; 24 — v. axillaris; 25 — vv.
intercostales posteriores; 26 — v. thoracica interna;
27 — v. subclavia; 28 — plexus venosus vertebralis.

DÜWÜNÇEĞİŇ GAN AÝLANŞY

