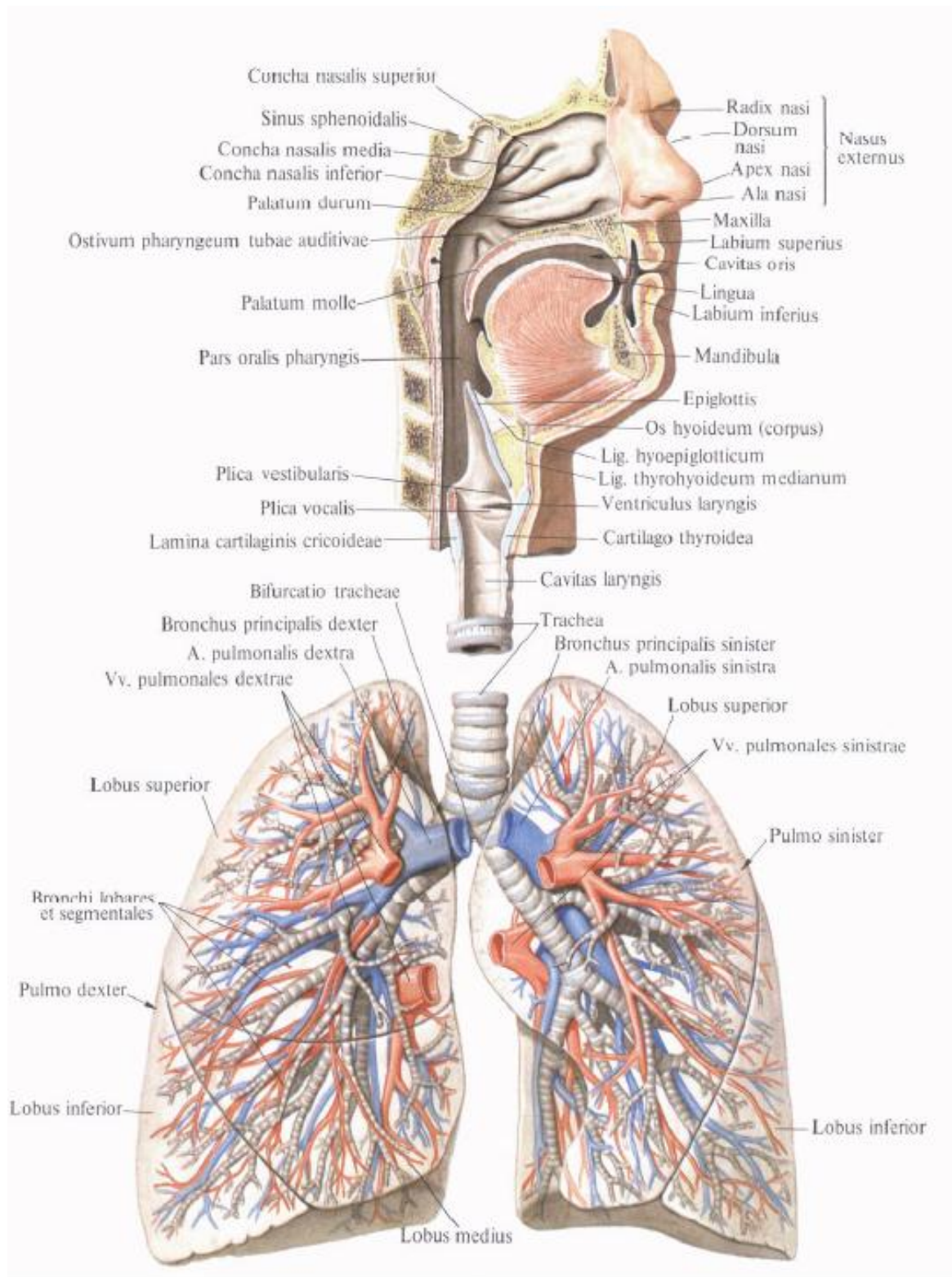
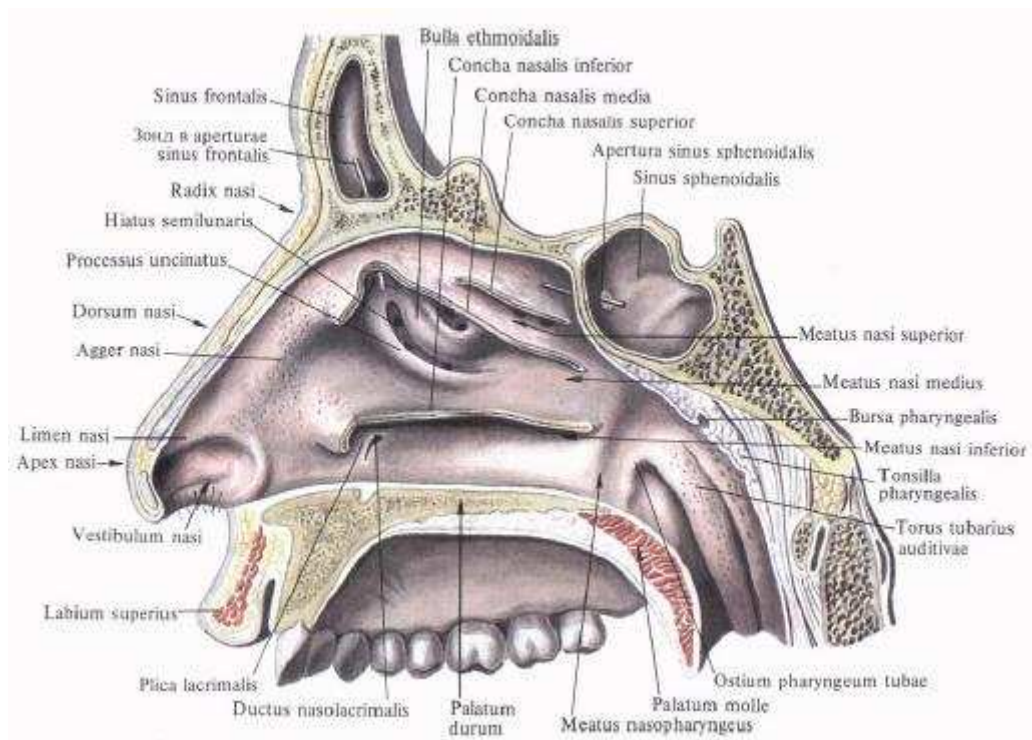
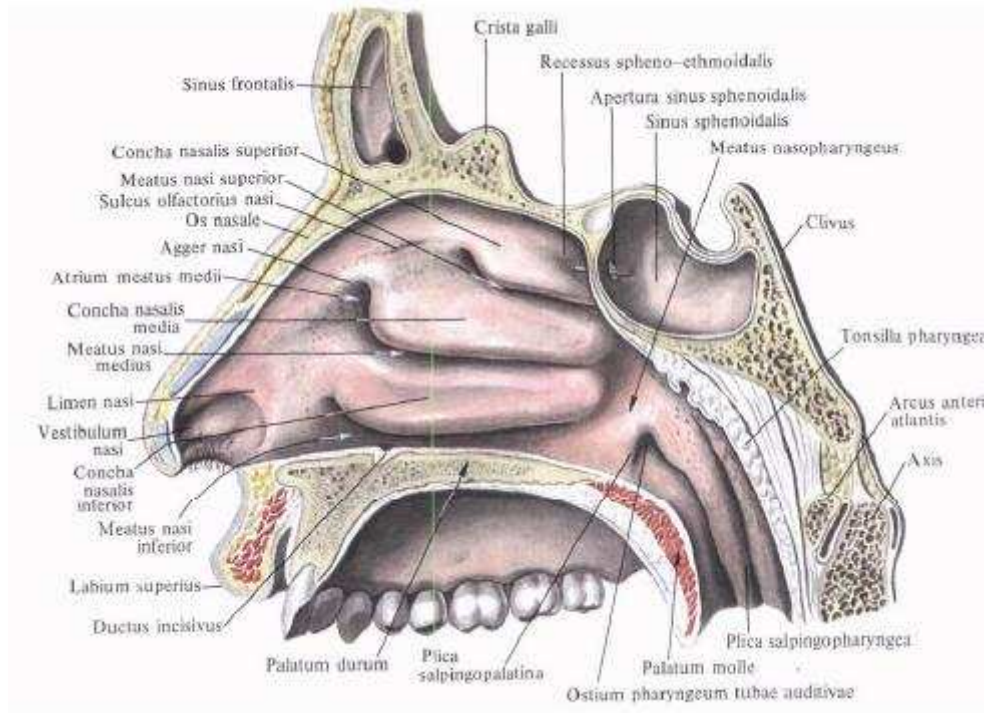


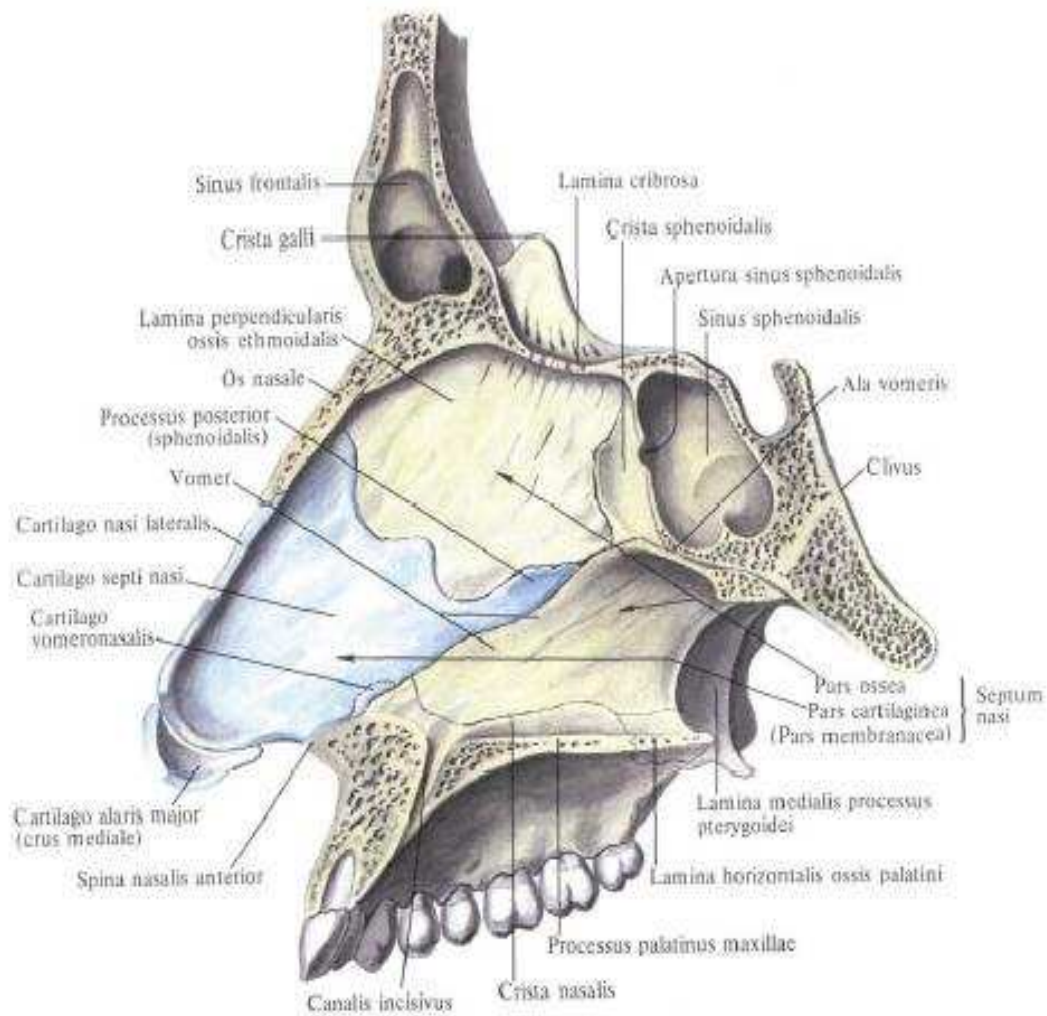
Dem alyş ulgamy



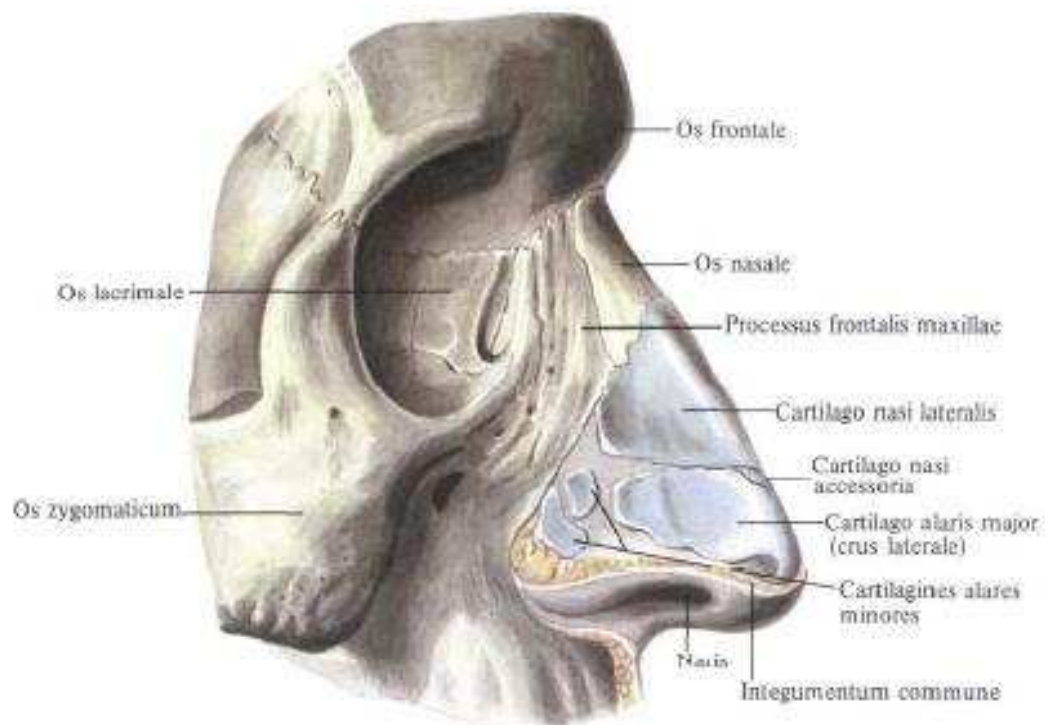
Burun boşluğu



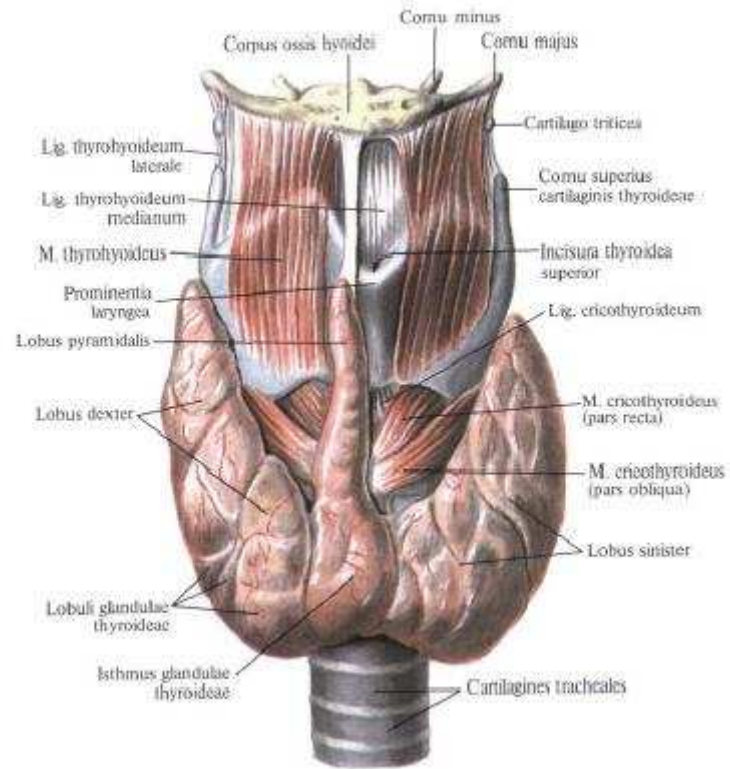
Burun germewi



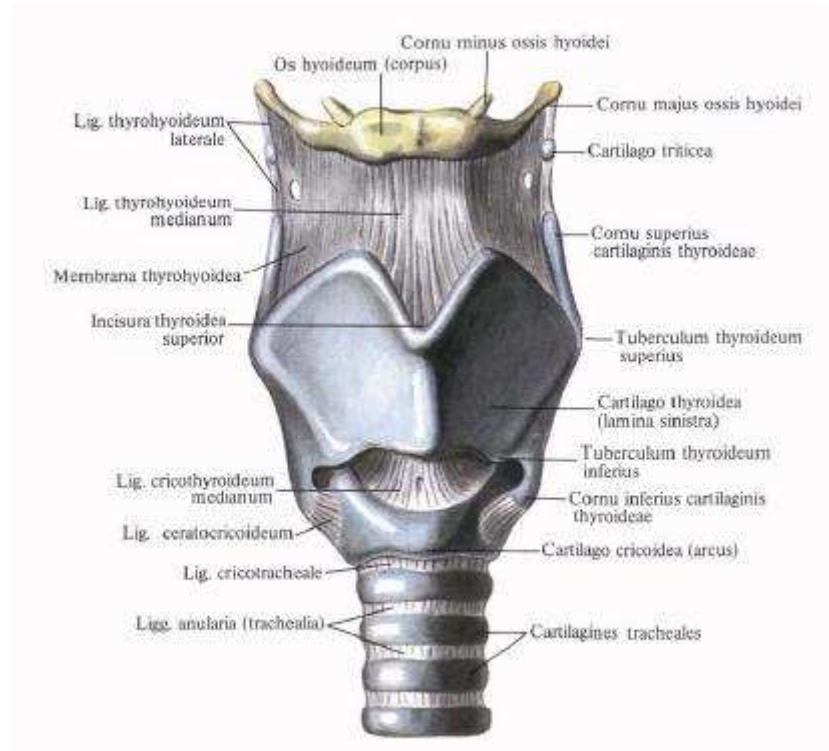
Burnyň ketirdewükleri



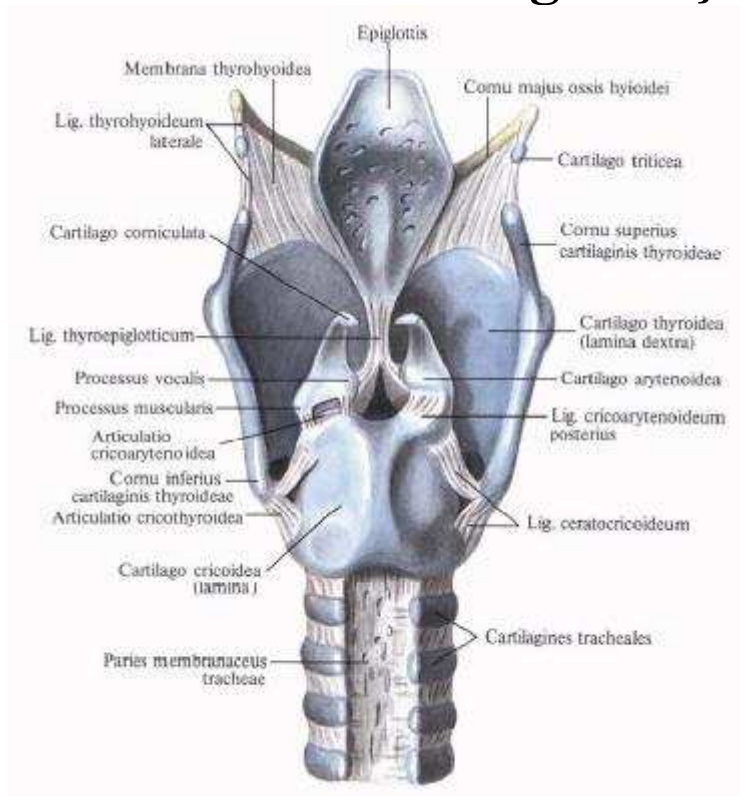
Kekirdek we galkan görnüşli mäs



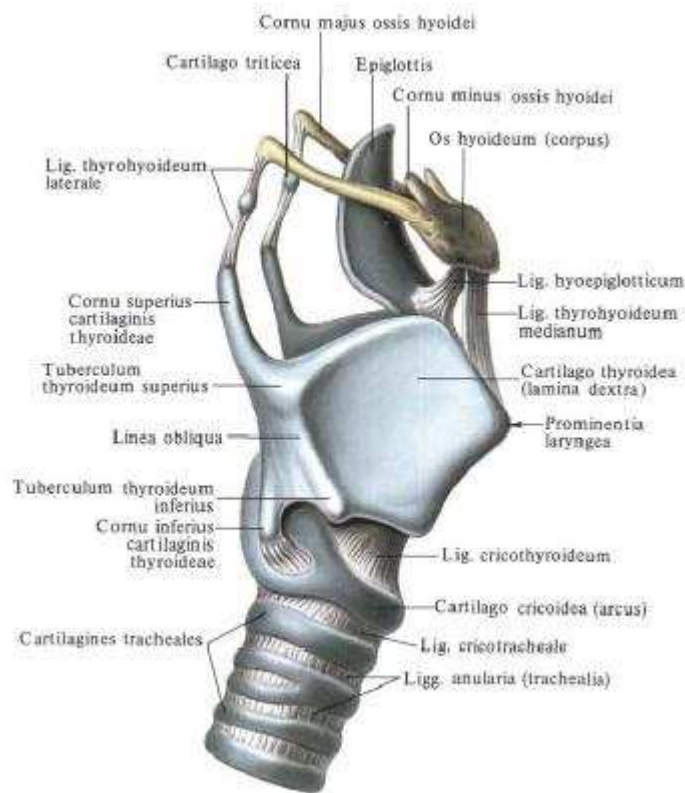
Kekirdegiň baglaýjylary we bogulary; öňden görnüşi



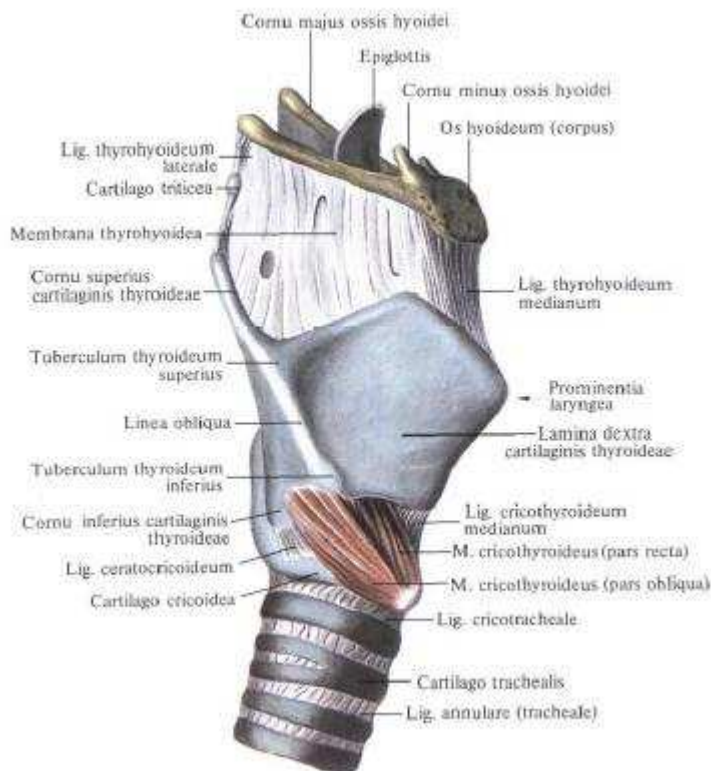
Kekirdegiň baglaýjylary we bogulary; yzdan görnüşi



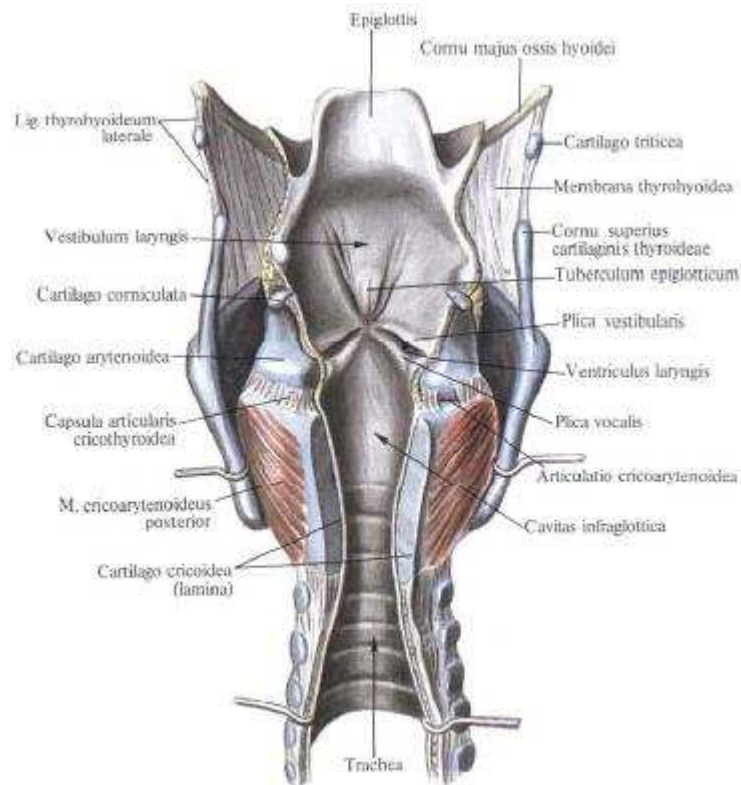
Kekirdegiň baglaýjylary we bogunlary sagdan görnüşi



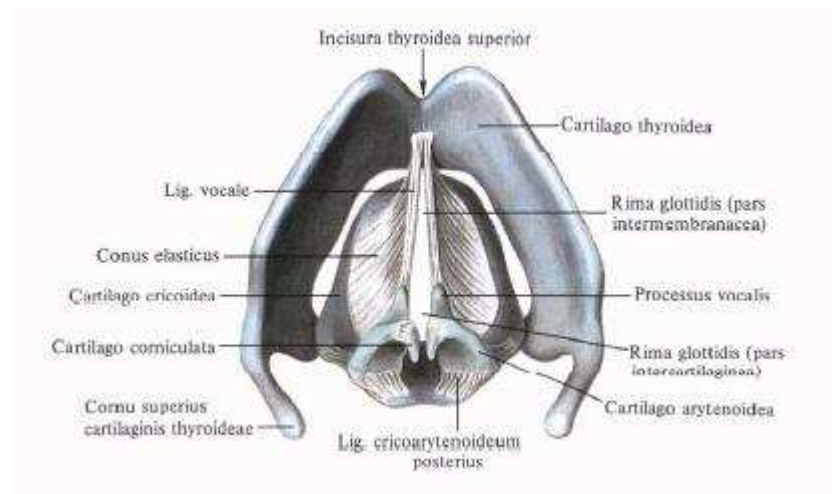
Kekirdegiň muskullary



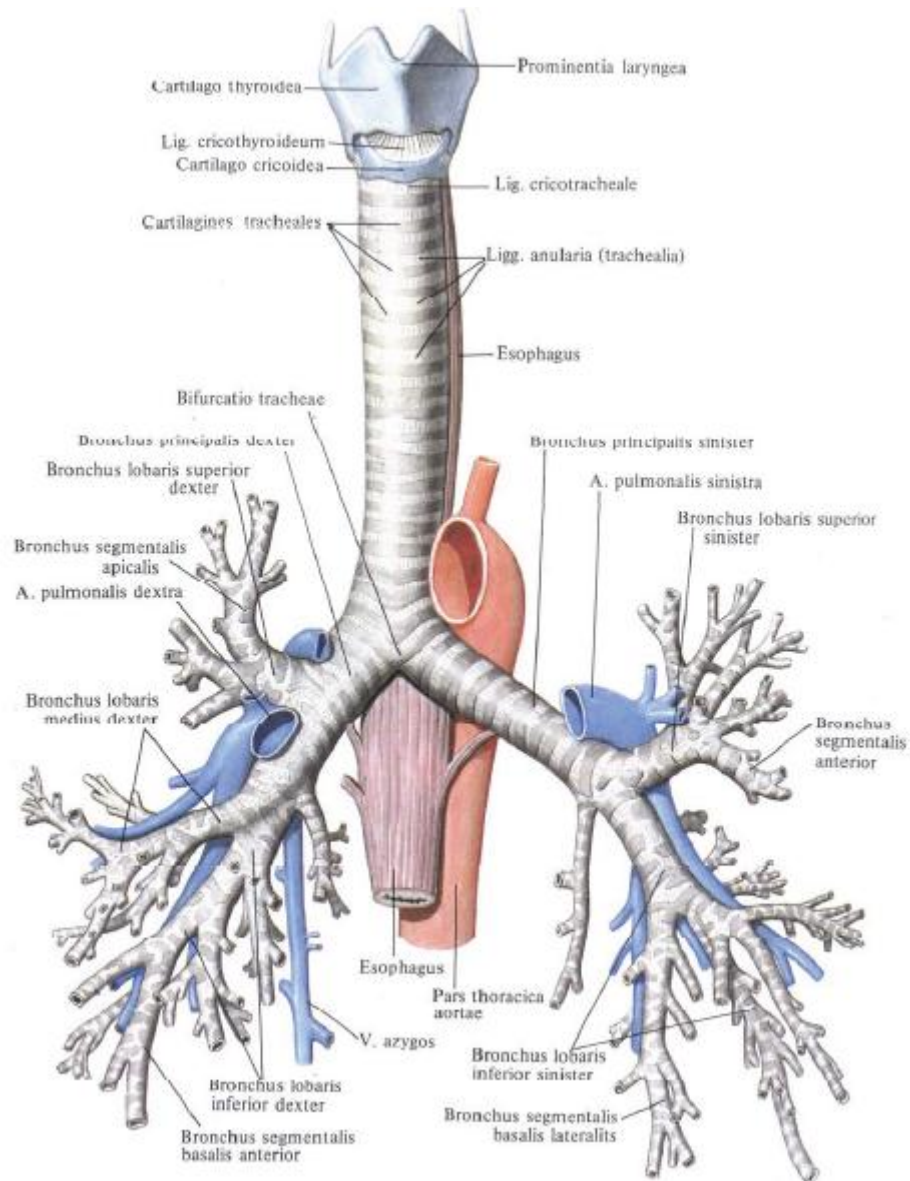
Kekirdegiň boşlugy



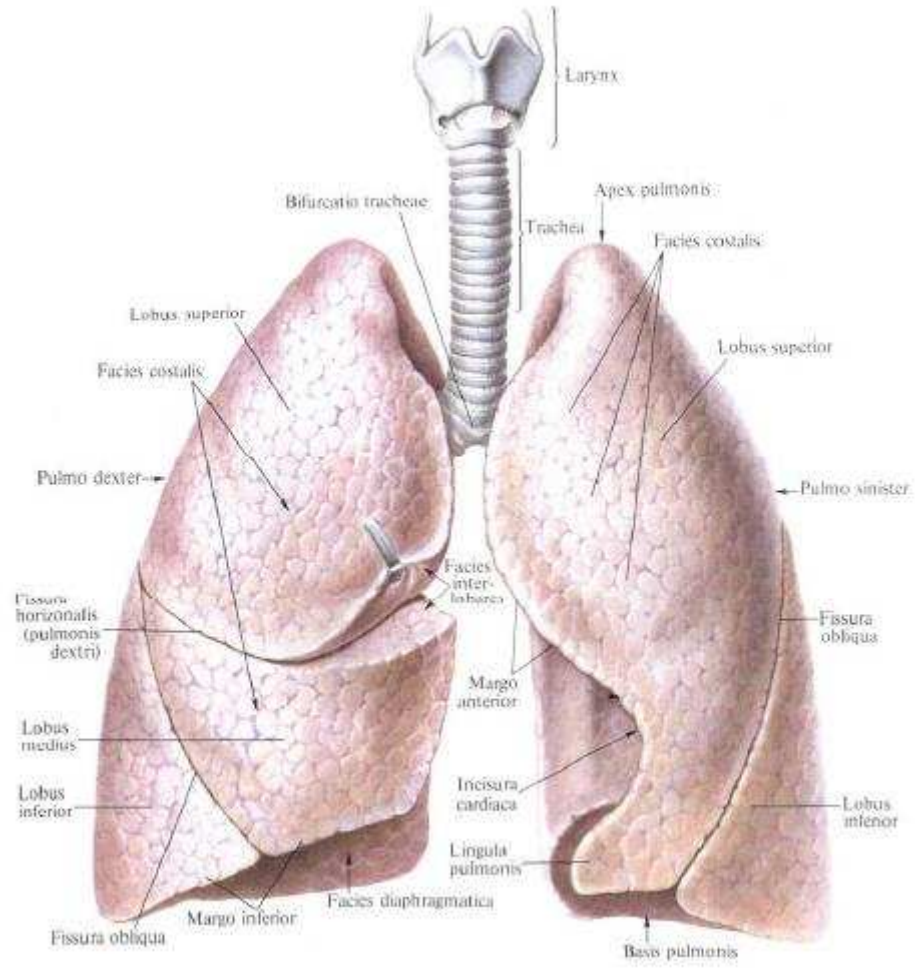
Elastiki konusy we ses gasynlary



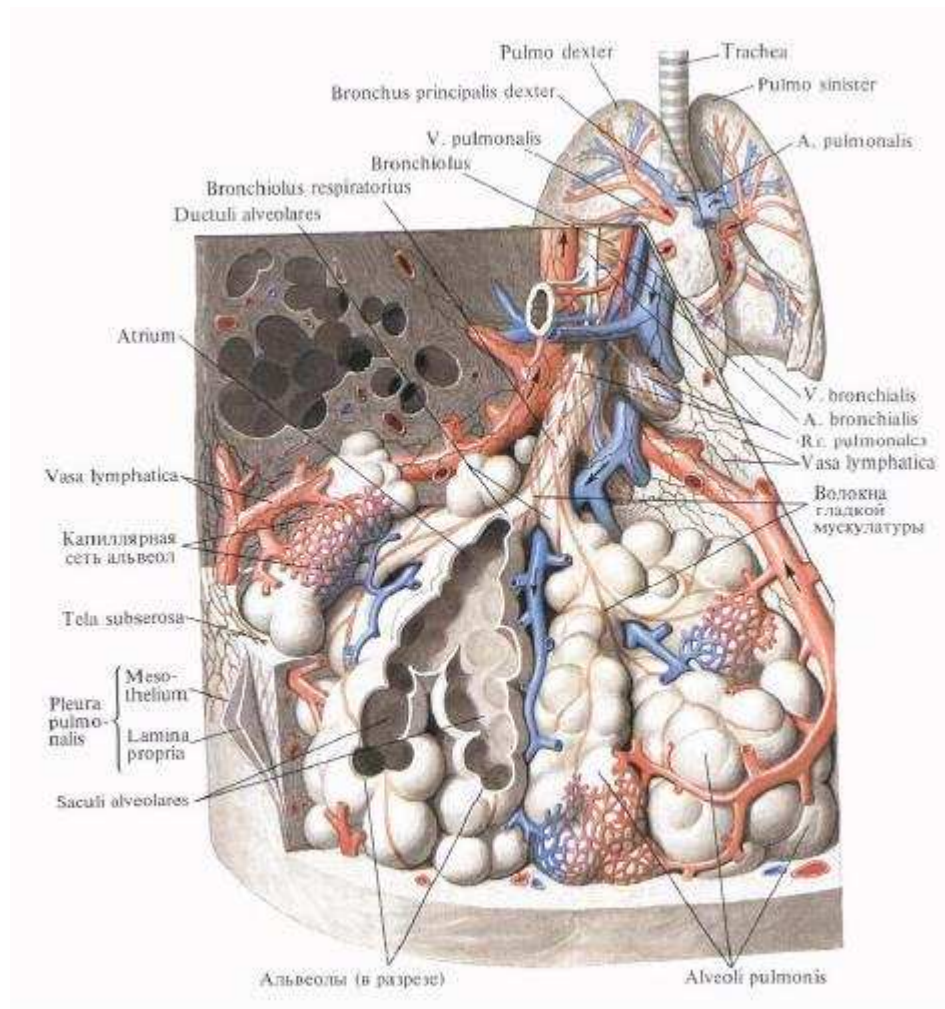
Traheya we bronhlar



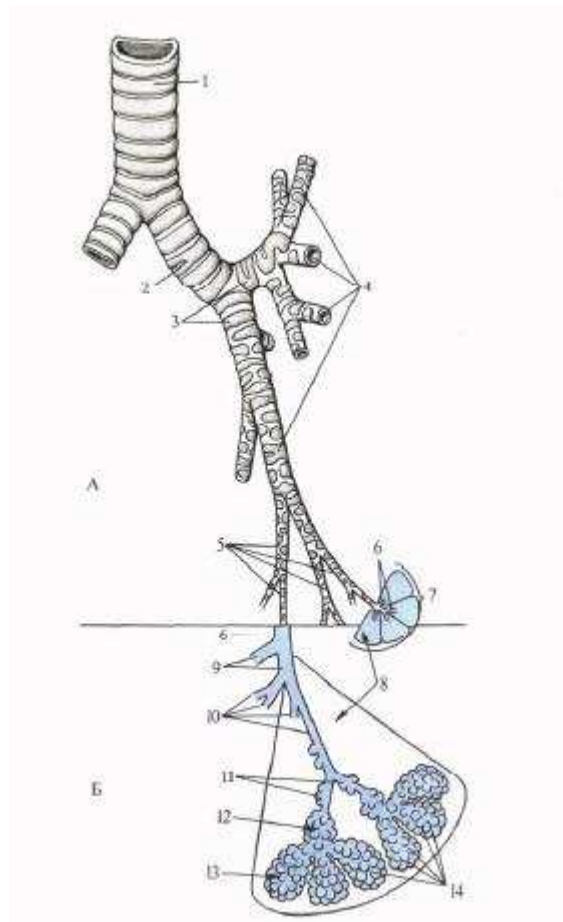
Öýkenler



Öýkeniň asinusy

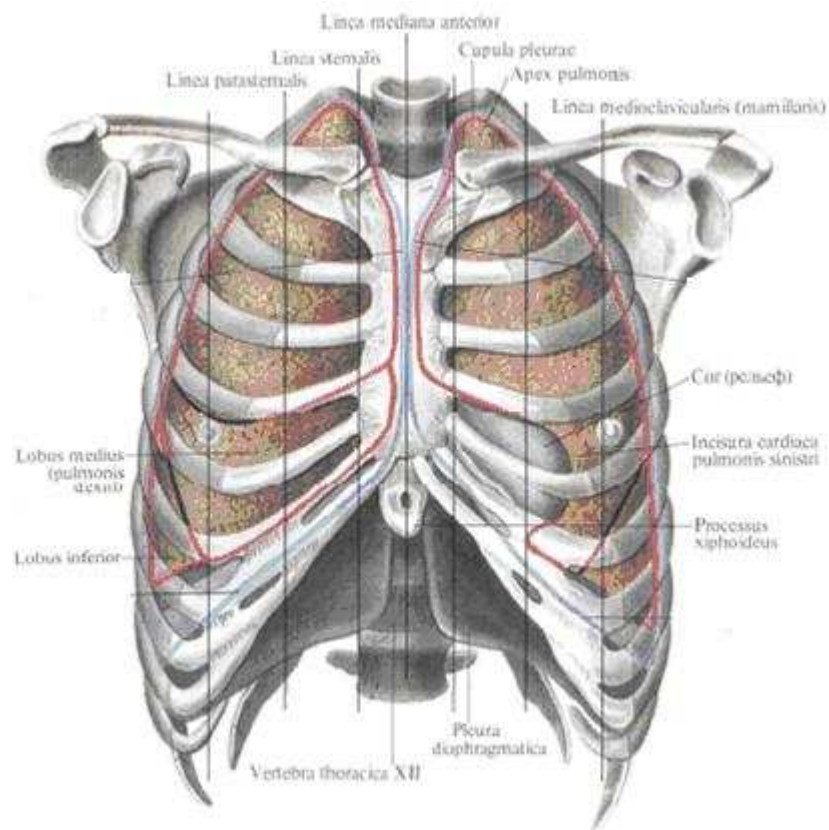


Bronhial(A) we alweolýar(B) agaçlaryň bölünşiniň shemasy



1 – trachea; 2 – bronchus principalis sinister; 3 – bronchii lobares; 4 – bronchii segmentales; 5 – m. bronchiales segmentorum; 6 – bronchus lobularis (BNA); 7 – lobus pulmonis (secundarius); 8 – lobus pulmonis (primarius); 9 – bronchioli terminales; 10 – bronchioli respiratorii; 11 – ductuli alveolares; 12 – atrium alveolare; 13 – sacculus alveolaris; 14 – alveoli pulmonis.

Öýkenleriň we plewranyň araçäkleri; öňden görnüşi



Öýkenleriň we plewranyň araçäkleri; yzdan görnüşi

